



## Pre-Purchase Inspection

Angelone, 490, 2018 Model



### Survey Details

Survey type:	Pre-Purchase Inspection
Survey No#:	PPS210913
Client:	[REDACTED]
Email:	spayne@dalboramarine.com.au
Inspection date:	12th September 2021
In-Water location:	The Boatyard, Mount Martha, Victoria
Out-Water location:	Martha Cove Marina, Mount Martha, Victoria

## Contents

Disclaimers .....	2
Areas .....	3
Hull Specifications .....	3
Hull Condition (Below Waterline) .....	4
Hull Condition (Above Waterline) .....	5
Seacocks / Thru-hulls .....	6
Cockpit .....	7
Interior .....	9
Deck Hardware & Fittings .....	10
Main Engines & Propulsion .....	12
Driveline .....	14
Fuel Systems .....	16
Generator / Genset .....	17
Plumbing Systems .....	18
Electrical Systems .....	19
Heating & Cooling .....	20
Tanks .....	21
Appliances & Media .....	22
Navigation & Communication .....	23
Bilge Pumps .....	24
Safety Equipment .....	24
Meters & Voltage .....	25
Sea Trial .....	26
General Summary .....	26
Actions .....	26

## Disclaimers

### SCOPE OF SURVEY

The purpose of the survey is to ascertain the general condition and/or value of the vessel for the named client on the above mentioned date/s.

This vessel was surveyed without removals of any parts, including fittings, tacked carpet, screwed or nailed boards, anchors and chain, fixed partitions, instruments, spare parts, and miscellaneous material.

Locked compartments or otherwise inaccessible areas would also preclude inspection.

If this survey does not mention a specific item, equipment or machinery, it has not been inspected or included as part of the survey scope.

The test methods used are of a non-destructive in nature, which may include Thermal Images, Moisture Meter readings, Ultrasound and Digital Photos throughout the survey where the surveyor has deemed appropriate and will be documented in the report if the findings prove to be notable.

Furthermore, no determination of stability characteristics or inherent structural integrity has been made and no opinion is expressed with respect thereto.

Electrical and electronic systems tested by means of powering up only when power is available. If power is not available, visual inspections only are performed.

Engines, drives, mechanical and plumbing systems are inspected visually for signs of defect and deterioration. The use of Thermal Imaging or Infrared Thermometers may be used in some areas if deemed appropriate, any findings of note will be reported.

Minor defects may have been identified that are not specified in this report, in such circumstances these are considered as normal wear and tear to commensurate with the vessel's age.

Rigging and spars, where applicable, are inspected from the deck only. Sails are generally excluded from inspection unless otherwise stated.

It is the vessels master's responsibility to ensure all safety equipment is appropriate for the vessels intended usage.

The survey report is subject to the Deaspec Marine terms and conditions and represents the condition of the vessel on the above date(s), and is the unbiased opinion of the undersigned, but is not to be considered an inventory or a warranty either specified or implied.

### DEFINITION OF TERMS

Terms used to identify the condition of item or components unless specifically indicated:

**Excellent Condition:** New or presenting as new.

**Good Condition:** Near new, with only minor cosmetic discrepancies sighted.

**Sound Condition:** Useable and appropriately fitted for its intended purpose.

**Fair Condition:** Functional, however, may require ongoing maintenance or service.

**Poor Condition:** Requires replacement, repair or reached the end of service life.

## 1. Hull Specifications

Ref	Item	Description
1.1	Build / Make	Angelone
1.2	Model	490
1.3	Year Model	Built 2017 for launch 2018. (No build plate sighted)
1.4	Main Engine (Port)	2017 Volvo Penta: 400hp, D6-400A fresh water-cooled diesel engine. Serial#A737831
1.5	Main Engine (Starboard)	2017 Volvo Penta: 400hp, D6-400A fresh water-cooled diesel engine. Serial#A737832
1.6	Registration	TX965
1.7	Hull Number / HIN	None sighted.
1.8	Length (M)	14.93
1.9	Beam (M)	5.2
1.10	Draft (M)	1.56
1.11	Dry Weight / Displacement (Kg)	15,900
1.12	Disclaimer:	Specifications stated above are approximate only and provided for informational purposes. The information was received from online data and/or research of similar make and model vessels and are not the measurements taken from the actual vessel.



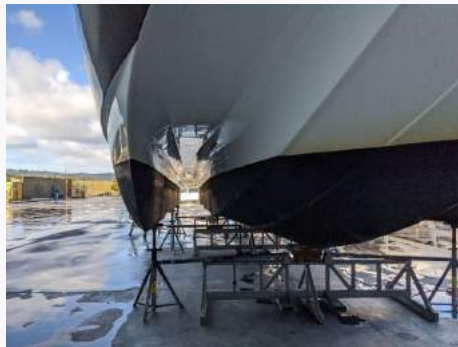
Ref # 1.1

## 2. Hull Condition (Below Waterline)

Ref	Item	Material / Construction	Condition	Comments
2.1	Hull Bottom	FRP Composite	Sound	<p>Trimaran semi-planning hull, hulls are stepped. No signs of previous repair, stress or defect was sighted.</p> <p>The hull bottom was moisture tested using a moisture meter (Tramex Skipper +) the hulls were mostly found to be within normal ranges, however we did detect slightly elevated reading on each bow around the waterline. We did notice some minor cosmetic blisters in these areas.</p> <p><b>C: Low Priority (Cosmetic or Superficial)</b></p>
2.2	Hard chine	FRP Composite	Good	Hard chine is clean and fair edge running along hull, no damage or defects sighted.
2.3	Hull Strakes	FRP Composite	Good	Two integrated hull strakes, running parallel to hull, no damage or defect sighted.
2.4	Keel	FRP Composite	Good	Planning keel running along centreline, no damage.
2.5	Transom	FRP / Timber Composite	Good	The transom was percussion sounded in areas with no notable anomalies detected.
2.6	Antifouling	Black Ablative Application	Sound	Suitable coverage and adhesion.
2.7	Hull Anode	Zinc or Aluminium	Good	2 @ 90% capacity



Ref # 2.1



Ref # 2.1



Ref # 2.1

## 2. Hull Condition (Below Waterline) (Cont.)



Ref # 2.3



Ref # 2.5

## 3. Hull Condition (Above Waterline)

Ref	Item	Material / Construction	Condition	Comments
3.1	Hull side / Topsides	Paint / FRP Composite	Sound	Pearl Two-part polyurethane finish with some cosmetic wear and tear in areas consistent with fender rub and hull scuffing marks.
3.2	Gunnel	Rubber with stainless Steel	Good	Appears to run true, no notable indentation or damage.
3.3	Bow Stem	FRP Composite	Good	No damage sighted
3.4	Skin Fittings	Stainless Steel	Sound	Some tea staining present, suitably installed.
3.5	Foredeck	FRP Sandwich Core	Good	Percussion sounded and moisture tested appearing rigid and structurally sound.
3.6	Superstructure	Gelcoat / FRP Composite	Good	The superstructure and bridge deck was found to be structurally sound.
3.7	Swim platform	FRP Composite	Good	Hull integrated swim platform laid with solid teak.; Minor damage to starboard teak step. <b>C: Low Priority (Cosmetic or Superficial)</b>



### 3. Hull Condition (Above Waterline) (Cont.)



Ref # 3.1



Ref # 3.1



Ref # 3.1



Ref # 3.3



Ref # 3.4



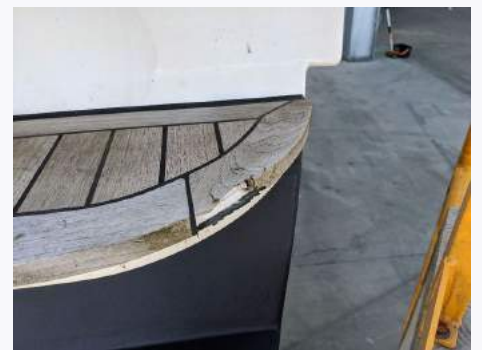
Ref # 3.5



Ref # 3.5



Ref # 3.6



Ref # 3.7

### 4. Seacocks / Thru-hulls

Ref	Item	Material / Construction	Condition	Comments
4.1	Seacocks (Port Side)	Bronze or similar	Sound	1 on Port side, exercised.
4.2	Seacocks (Stbd Side)	Bronze or similar	Sound	3 on Starboard side, all were exercised.
4.3	Intake Grills	Bronze or similar	Sound	Appeared clear and unobstructed.

#### 4. Seacocks / Thru-hulls (Cont.)

4.4	Skin Fittings	Bronze or similar	Sound	No notable pitting or corrosion.; Some tea staining weeping from some stainless fittings.
4.5	Transducers / Speed Logs	Thru-Hull Type	Good	Along centre hull keel line midships.
4.6	Sea Strainers	Perko Type	Good	Fitted where required, no leak and cracks to lenses.



Ref # 4.2

#### 5. Cockpit

Ref	Item	Material / Construction	Condition	Comments
5.1	Cockpit Sole	FRP Composite	Sound	Overlaid with natural laid teak.
5.2	Combing / Bulwarks	FRP Composite	Good	Full height bulkwarks around cockpit and side decks with gelocat finish
5.3	Seating & Upholstery	Material	Good	Cockpit table could benefit from a sand and varnish.  Seating cushions stored in rear cabin.
5.4	Covers & Awnings	Hardtop Awning	Good	Hardtop awning over cockpit
5.5	Bimini Frame / Targa	FRP Composite	Good	Bimini on bridge deck with Targa arch, both found suitably secure.
5.6	Cockpit doors	Stainless Steel	Good	Glass sliding entrance door opens and closes with locking mechanism.



5. Cockpit (Cont.)

5.7	Lockers and storage	FRP Composite	Sound	Storage lockers are clean and free from water and moisture.
5.8	Cockpit Drainage	Self draining	Fair	<p>Cockpit is somewhat self draining, however water can collect around seating area and run-off from side decks leads into side deck hatches. Drainage could be improved in these areas.</p> <p><b>B: Medium Priority (Service or Maintenance Item)</b></p>
5.9	Cockpit lighting	12-volt	Fair	<p>Cockpit lighted powered-up.;</p> <p>Courtesy and underwater lighting did not power-up. Kept tripping breaker.</p> <p><b>B: Medium Priority (Service or Maintenance Item)</b></p>



Ref # 5.1



Ref # 5.2



Ref # 5.6



Ref # 5.8



Ref # 5.8



Ref # 5.8

## 6. Interior

Ref	Item	Material / Construction	Condition	Comments
6.1	Interior Frames & Bulkheads	FRP Composite	Sound	Timber veneer plywood panels bonded to hull.
6.2	Hull stringers	FRP Composite	Sound	FRP longitudinal and transverse frames all found in sound structural condition. Not all hull frames could be inspected due to permanently fitted panels.;  Please note, the internal areas of both side hulls were not inspected. Access was restricted by fixed panels.
6.3	Bilge	Flowcoat	Sound	Accessible via multiple access panels within the cabin sole and found mostly clean and dry.;  Please note, the internal areas of both side hulls were not inspected. Access was restricted by fixed panels.
6.4	Cabinetry & Fitout	Timber Veneer	Good	Normal wear and tear in areas.
6.5	Brightwork	Low sheen	Good	Little signs of wear or tear present
6.6	Headlining	Material Panels	Good	Reasonably clean, no sagging or staining sighted.
6.7	Cabin Sole	Timber	Sound	Laid timber 10mm, some minor wear.
6.8	Doors & Handles	Aluminium	Good	All found functional
6.9	Galley Fitout	Timber Veneer	Good	In good usable condition.
6.10	Benchtops	Solid marble or similar	Good	No notable wear.
6.11	Cupboards and closers	Push Button Type	Good	All found functional.
6.12	Seating & Upholstery	Leather	Sound	Some minor wear sighted.
6.13	Bedding	Foam Base	Good	Appear in reasonable condition.

6. Interior (Cont.)



Ref #6



Ref #6



Ref #6



Ref # 6.1



Ref # 6.2



Ref # 6.4



Ref # 6.7



Ref # 6.9



Ref # 6.12

7. Deck Hardware & Fittings

Ref	Item	Material / Construction	Condition	Comments
7.1	Bowrail	Stainless Steel	Good	Appears suitably secure, running straight an true.
7.2	Stanchions	Stainless Steel	Good	No signs of crazing or compression found around the bowrail stanchion bases on the deck.

7. Deck Hardware & Fittings (Cont.)

7.3	Cleats	Stainless Steel	Good	Custom cleats, appeared secure providing multiple mooring configurations.
7.4	Hatches	Acrylic or similar	Good	All deck hatches appeared free from leak, minimal wear too lenses. Closers fitted.
7.5	Windows	Acrylic or similar	Good	Multiple sectional tempered glass helm windows surround the main cabin and helm.
7.6	Portholes	Acrylic or similar	Good	Porthole windows are installed around hulls sides appearing leak free.
7.7	Anchor Winch	12-Volt Electric	Good	Maxwell anchor winch fitted to bow, no notable corrosion to under deck mounted motor. The anchor was raised and lower using helm controls.
7.8	Anchor	Stainless Steel	Good	Suitably sized plough type anchor mounted at the bow.
7.9	Anchor chain, warp and fittings	Stainless Steel	Good	Stainless chain sighted in anchor locker; length unknown.
7.10	Bow roller / Stem head	Stainless Steel	Good	Securely mounted



Ref # 7.3



Ref # 7.5



Ref # 7.6



### 7. Deck Hardware & Fittings (Cont.)



Ref # 7.8

### 8. Main Engines & Propulsion

Ref	Item	Type / Make	Condition	Comments
8.1	Engine Block	Inline 6 Cylinder	Good	5.8 litre turbo diesel, no oil leaks or corrosion sighted.
8.2	Sump	Pressed Steel	Good	No oil staining or corrosion on sump.
8.3	Manifolds	Cast Aluminium	Good	No corrosion or deterioration evident.
8.4	Exhaust System	Single horn	Good	Single cast horn connected with hose clamps and rubber joiners, exiting transom assembly.
8.5	Exhaust Riser / Elbow	Stainless Steel	Good	Water cooled elbow riser, no corrosion or deterioration evident.
8.6	Serpentine Belt	Reinforced Rubber	Good	No excessive wear or movement sighted.
8.7	Pulleys & Wheels	Steel	Good	No excessive movement or deterioration.
8.8	Engine Bed Frames	FRP Composite	Sound	Longitudinal engine beds, percussion sounded. No stress or defect sighted.
8.9	Engine Mounts	Flexible Mounts	Good	Volvo Penta flexible mounts, no corrosion sighted.
8.10	Cooling System	Closed / Fresh water	Good	Fresh water cooling system via drive pick-up.



8. Main Engines & Propulsion (Cont.)

8.11	Coolant	Green	Good	Appeared at normal levels and colour.
8.12	Hoses	Reinforced Rubber	Sound	No notable deterioration, splitting or bulging cooling system hoses, except some minor deterioration to raw water intake hose between drive and engine on both engines. B: Medium Priority (Service or Maintenance Item)
8.13	Heat Exchanger / Intercooler	Metal	Good	No weeping from end caps, appear serviceable.
8.14	Water Pump	Impeller Type	Good	No notable leak sighted.
8.15	Turbocharger	Cast Metal	Good	No oil leaks or deterioration sighted.
8.16	Blowers / Ventilation	12-volt	Good	12-volt bilge blowers fitted.
8.17	Engine Oil	Oil	Good	Appeared at normal levels and colour.
8.18	Gear lube / oil	Oil	Good	Appeared at normal levels and colour.
8.19	Thermostat	Cast	Good	No corrosion or build-up-sighted externally.
8.20	Throttle connections	Electronic Terminals	Good	Appear serviceable.
8.21	Gear shift connections	Electronic Terminals	Good	Appear serviceable.
8.22	Throttle levers	Electronic Type	Good	Top mount controls, smooth to engage.
8.23	Engine bilge	Flow coat	Good	Reasonably clean.

8. Main Engines & Propulsion (Cont.)



Ref # 8.1



Ref # 8.1



Ref # 8.1



Ref # 8.4



Ref # 8.9



Ref # 8.12



Ref # 8.13



Ref # 8.14



Ref # 8.23

9. Driveline

Ref	Item	Type / Make	Condition	Comments
9.1	Type	Stern Drives	Good	Twin Volvo Penta DPH-D1 drives
9.2	Gear Box	Volvo penta	Good	No damage or abrasion to lower units.
9.3	Transom Shields	Cast Aluminium	Good	No corrosion or pitting sighted.

9. Driveline (Cont.)				
9.4	Steering	Hydraulic	Good	Twin cylinder hydraulic steering with tie bar.
9.5	Connections and Lines	Various	Good	All appeared serviceable.
9.6	Propellers	Stainless Steel	Sound	Volvo Penta duo propellers, no damage.
9.7	Shaft	Stainless Steel	Good	Appears to run true.
9.8	Skegs	Cast Aluminium	Good	No damage.
9.9	Bellows	Rubber	Good	No deterioration present.
9.10	Transom Shields	Cast Aluminium	Good	No pitting or corrosion sighted.
9.11	Leg Trim Rams	Hydraulic	Good	Functional.
9.12	Bonding	Wire	Good	Appearing to be connected/ bonded where sighted.
9.13	Drive Anodes	Zinc or Aluminium	Excellent	Approximately 100% service life remaining.
9.14	Drive Coatings	Closed / Fresh water	Sound	Propellers are coated in prop-speed which appeared suitably adhered and in serviceable condition, antifouling was newly applied.



Ref # 9.1



Ref # 9.2



Ref # 9.2

9. Driveline (Cont.)



Ref # 9.6



Ref # 9.9



Ref # 9.11

10. Fuel Systems

Ref	Item	Type / Make	Condition	Comments
10.1	Fuel Lines	Marine Fuel Hose	Good	No deterioration sighted.
10.2	Fuel Fittings	Hose and clamps	Good	No leaks sighted.
10.3	Fuel Filters	Volvo Penta	Good	no corrosion externally.
10.4	Fuel Shut-Off	Bronze Valve	Sound	Fitted on fuel tank.
10.5	Fuel Filler Line	Fuel Hose	Sound	Appeared serviceable where accessible.
10.6	Fuel Breather	Fuel Hose	Sound	Appeared serviceable where accessible.



Ref # 10.3



Ref # 10.4



Ref # 10.4



## 11. Generator / Genset

Ref	Item	Type / Make	Condition	Comments
11.1	Type	Made 10.2 kw	Good	Fresh water cooled diesel genset.
11.2	External Case / Bottom Tray	Steel	Good	No corrosion.
11.3	Cooling System	Closed / Fresh water	Good	No leaks sighted.
11.4	Heat Exchanger	Metal	N/A	Not accessible, not inspected.
11.5	Hoses and Fittings	Reinforced Marine Hose	Good	Fitted on fuel tank.
11.6	Exhaust	Reinforced Marine Hose	Good	Exits hull on port side.
11.7	Muffler / Wet lock	FRP Composite	Good	Appears suitably installed.
11.8	Engine Oil	Oil	Good	Appears at normal levels.
11.9	Cooling water flow	Port Side	Good	Appeared normal.
11.10	Load Tested	Ships Power	Good	Load tested to 22 AMPS



Ref # 11.1



Ref # 11.1



Ref # 11.1



Ref # 11.6



Ref # 11.10



## 12. Plumbing Systems

Ref	Item	Type / Make	Condition	Comments
12.1	Fresh Water Pump	12-Volt Jabsco	Good	Functional
12.2	Plumbing / Hose	PEX type	Sound	Potable water is serviced with PEX type piping and brass fittings. No leak or deterioration sighted where accessible.
12.3	Water Heater	Nautic Marine	Good	240-volt electric element type.
12.4	Relief Valve	Pressure Relief Valve	Good	Tested
12.5	Hot Water Supply	Hot Water Test	Good	Hot water produced, using electric element,
12.6	Sinks	Stainless Steel	Good	All drain overboard.
12.7	Showers	Head Shower	Good	Showers fitted in head, functional
12.8	Shower Drainage	12-volt	Good	Shower drains into sump box, discharging overboard via 12-volt pump.
12.9	Toilet / Head	Dometic Vacuum flush	Good	Fresh water flush toilet fitted in head, functional.
12.10	Toilet Plumbing	Sanitation Hose	Good	Hose with hose clamps draining into holding tank.



Ref # 12.1



Ref # 12.2



Ref # 12.3

## 12. Plumbing Systems (Cont.)



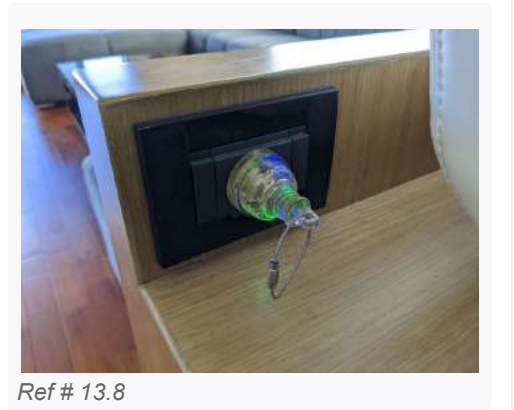
Ref # 12.9

## 13. Electrical Systems

Ref	Item	Type / Make	Condition	Comments
13.1	Shore Power Lead	15-amp Heavy Duty	Sound	Marinco type 15 amp power lead.
13.2	Shore Power Breaker	15-amp Breaker	Sound	Visually inspected.
13.3	Interior Lighting	12-volt	Good	All powered-up
13.4	Exterior Lighting	12-volt	Good	All powered-up
13.5	Galvanic Isolator	Zinc Saver II	N/A	None sighted.
13.6	Wiring & Cables	Insulated Wire	Good	Visually inspected where accessible, no defects sighted.
13.7	Switch Panel	AC/DC switch panel	Good	Functional
13.8	Power outlets / GPO	Australian Type	Good	Tested using DETA-240 plug tester, resulting in a PASS. However, installed upside down.
13.9	Battery Charger	Victron Blue	Good	Powered-up.
13.10	Smart Monitor	MSP 700	Good	Electrical smart monitoring system for AC and DC systems

**13. Electrical Systems (Cont.)**

13.11	Note:			<p>The electrical systems were inspected visually only and powered-up where required. As the vessel has been built overseas, no determination has been made as to whether the electrical systems have been installed to meet Australian Standards.</p>
-------	-------	--	--	--



**14. Heating & Cooling**

Ref	Item	Type / Make	Condition	Comments
14.1	Type	Dometic	Sound	Four Air Conditioner/Heaters fitted, not all units could be inspected due to access restrictions.
14.2	Ducting	Insulated Ducting	Good	Appeared servicable.
14.3	Hoses	Reinforced Marine Hose	Good	No leaks sighted.

### 14. Heating & Cooling (Cont.)

14.4	Cooling Mode	Test	Good	All units appeared to produce cool air.;  We noticed the two forward units were blowing slightly less air (fan) than main saloon.
14.5	Heating Mode	Test	Sound	The two main saloon units appeared to produce warm air.  The two forward units did not go into heating mode. <b>B: Medium Priority (Service or Maintenance Item)</b>
14.6	Cooling Water Flow	Port Side	Good	Steady water flow sighted.
14.7	Cooling Pump	12 volt	Good	Good visual condition.



Ref # 14.1

### 15. Tanks

Ref	Type	Material / Construction	Condition	Capacity
15.1	Water Tank	Aluminium	Good	Said to be 300 litres
15.2	Fuel Tanks	Aluminium	Sound	Said to be 1100 litres total
15.3	Blackwater Tanks	Stainless Steel	Good	Approximately 200 litres.

15. Tanks (Cont.)



Ref # 15.3

16. Appliances & Media

Ref	Appliance	Type	Test	Comments
16.1	Refrigeration Systems	Dometic	Powered-up: <span style="color: green;">Yes</span>	12 volt fridge in galley.
16.2	Stove / Oven	Euro Kera	Powered-up: <span style="color: green;">Yes</span>	Two burner induction
16.3	Microwave	Panasonic	Powered-up: <span style="color: green;">Yes</span>	240 volt microwave.
16.4	Televisions	LE tv	Powered-up: <span style="color: green;">Yes</span>	Pop up television in saloon.
16.5	Sound Systems	Fusion	Powered-up: <span style="color: green;">Yes</span>	With speakers throughout.



Ref # 16.1



Ref # 16.2



Ref # 16.4



16. Appliances & Media (Cont.)



Ref # 16.4



Ref # 16.4

17. Navigation & Communication

Ref	Appliance	Type	Test	Comments
17.1	VHF Radio	Garmin	Powered-up: <span style="color: green;">Yes</span>	2 x VHF 200
17.2	Chartplotter	Garmin	Powered-up: <span style="color: green;">Yes</span>	2 x GPS Map 7410
17.3	Radar	Garmin	Powered-up: <span style="color: green;">Yes</span>	GPS Map 7410
17.4	Depth Gauge / Sonar	Garmin	Powered-up: <span style="color: green;">Yes</span>	GPS Map 7410
17.5	GPS / Speed Log	Garmin	Powered-up: <span style="color: green;">Yes</span>	GPS Map 7410
17.6	Autopilot		Powered-up: N/A	Not fitted.
17.7	Navigation Lights	12 volt LED	Powered-up: <span style="color: green;">Yes</span>	All powered up
17.8	Spotlight	12-volt	Powered-up: <span style="color: green;">Yes</span>	Marinco, from upper helm control.
17.9	Horn	12 volt	Powered-up: <span style="color: green;">Yes</span>	
17.10	Leg Trim Gauge	Analogue	Powered-up: <span style="color: green;">Yes</span>	
17.11	Analogue Gauges	On Helms	Powered-up: <span style="color: green;">Yes</span>	
17.12	Camera / Docking Cameras		Powered-up: -	

### 17. Navigation & Communication (Cont.)



Ref # 17.1



Ref # 17.2



Ref # 17.3

### 18. Bilge Pumps

Ref	Location	Number / Type	Comments
18.1	Forward Pump/s	1 x 12-Volt	powered up
18.2	Midships Pump/s	1 x 12-Volt	powered up
18.3	Aft Pump/s	1 x 12-Volt	powered up
18.4	Auto Function	Float Switch	None tested, were functional. A: High Priority (Rectification Required)
18.5	Manual Hand Pump		None fitted.

### 19. Safety Equipment

Ref	Safety Gear	Type	Comments
19.1	Life Jackets	Foam PFD type	2 x Inflatable & 20 x Foam sighted.
19.2	Extinguishers	Dry Chemical Type	2 x 9kg
19.3	Fire Suppression	Sea Fire	In engine bay
19.4	EPIRB	N/A	None sighted
19.5	Flares	One set	Dated: September 2023
19.6	Fire Blankets	One Blanket	Found in galley
19.7	Life rings	Plastic Ring	3 onboard

### 19. Safety Equipment (Cont.)

19.8	Compass	Ritchie	On helm
------	---------	---------	---------



Ref # 19.3

### 20. Meters & Voltage

Ref	Gauge	Location / Type	Reading
20.1	Engine Hour (Port)	Helm Analogue Gauge	107 hours
20.2	Engine Hour (Starboard)	Helm Analogue Gauge	111 hours
20.3	Genset	Analogue Gauge on Genset	118 hours
20.4	Batteries (House)	12-volt	13.5 volts
20.5	Batteries (Start)	12-volt	13.4 volts
20.6	Batteries (Genset)	12-volt	13.2 volts
20.7	Shore power (240 volt)	Switch board reading	246 volts
20.8	Gen Set power (240 volt)		232 volts



Ref # 20.1



Ref # 20.2



Ref # 20.3

## 21. Sea Trial

Ref	Vessel	Summary
21.1	Location	Safety Beach, Victoria
21.2	Weather	Clear skies, waves less than half metre and wind less than five knots. Calm conditions.
21.3	Manoeuvring	Vessel operated in forward and reverse while performing a series of turns to both port and starboard at various speeds using both throttle controls. We placed the vessel through a docking sequence and performed soundly at low speed using throttle controls.; Manoeuvrability at speed (16-20 knots) is a little sluggish, however turning at 10-12 knots was a lot more responsive.
21.4	Speed Trials	The vessel was placed under load for a series of speed trials and manoeuvres using both throttle levers reaching a maximum RPM of 3150 at WOT (Rated RPM 3500) at a speed over ground of 19.8 knots in reasonably calm conditions.  The design hull speed is 21 knots, the engines did not quite reach max rated RPM.;  The vessel performed best while cruising at between 10-12 knots, which would be its ideal cruising speed.
21.5	Observations	During the sea trials, the vessel and machinery performed as expected with no issues or alarms identified. Given the vessel is designed with a unique trimaran profile which provides greater stability, it does comprise its performance and manoeuvrability to a degree when compared to a single (mono) hull vessel.  After the sea trial, the engines and engine bay had been inspected with no defects found.

## 22. General Summary

Ref	Vessel	Summary
22.1	AngelOne 490	The Angelone 490 named "Trollius" presents in good condition cosmetically and structurally and appears to have been reasonably maintained and suitably serviced.;  The interior is spacious and in good usable condition with very little signs of general wear and tear.  Cockpit, foredeck, deck areas were found to be in good condition and structurally sound.;  All fittings appear to be marine grade quality, appearing in good condition.  All appliances and equipment powered-up and appeared functional, unless where stated.;  A handful of minor defects have been identified which are mentioned below along with appropriate recommendations.  It is the vessels master's responsibility to ensure all safety equipment is appropriate for the vessels intended usage

## A: High Priority (Rectification Required)

Ref	Responsibility	Comments
<a href="#">18.4</a> Bilge Pumps » Auto Function	N/A	Bilges pumps did not function using auto switch, recommend this be rectified.

## B: Medium Priority (Service or Maintenance Item)

Ref	Responsibility	Comments
<a href="#">5.8</a> Cockpit » Cockpit Drainage	N/A	Cockpit is somewhat self draining, however water can collect around seating area and run-off from side decks leads into side deck hatches. Drainage could be improved in these areas by fitting additional drains.
<a href="#">5.9</a> Cockpit » Cockpit lighting	N/A	Courtesy lighting and underwater lighting did not power-up, the breaker was tripping for these services. As such did not power-up.
<a href="#">8.12</a> Main Engines & Propulsion » Hoses	N/A	Some minor deterioration to raw water intake hose between drive and engine on both sides.
<a href="#">14.5</a> Heating & Cooling » Heating Mode	N/A	The two forward units did not go into heating mode, however did have cooling mode.

## C: Low Priority (Cosmetic or Superficial)

Ref	Responsibility	Comments
<a href="#">2.1</a> Hull Condition (Below Waterline) » Hull Bottom	N/A	The hull bottom was moisture tested using a moisture meter (Tramex Skipper +) the hulls were mostly found to be within normal ranges, however we did detect slightly elevated reading on each bow around the waterline. We did notice some minor cosmetic blisters in these areas.
<a href="#">3.7</a> Hull Condition (Above Waterline) » Swim platform	N/A	Minor damage to teak on starboard swim step.



## Terms and Conditions

The material in this report remains the property of Deaspec Marine Surveying and the contracted parties only and is confidential. Deaspec Marine Surveying will not distribute this report without the contracted party's permission and the contracted parties may not reveal or reproduce the contents of this report except for insurance and finance purposes without permission from Deaspec Marine Surveying.

## Prepared by

Josh Deacon - Principal Marine Surveyor



Deaspec Marine Surveying  
Email: [josh@deaspec.com.au](mailto:josh@deaspec.com.au)  
Ph: 0404 963 494  
Web: [www.deaspec.com.au](http://www.deaspec.com.au)