

Ref No. : E05228
Brand : Caterpillar
Model : D9T

Year : 2010
Hours : 22227.00
Tyres/UC : 80 %

Serial No. : RJS01481
Weight : 59700.00 kg

Components replaced @ (Hrs):

- Tilt Cylinder @ 21427
- UC @ 20987
- Final drive @ 20987
- Start motor @ 20827
- Engine @ 19966
- Torque Converter Scavenge Pump @ 19700
- Blade Cylinders @ 15982
- Equalizer Bar @ 12529
- Transmission @ 7635

Recent repairs @ 22,220 Hours:

- Machine inspected on arrival prior to disassembly
- Thoroughly pressure washed and cleaned
- Track frames removed from machine
- Pivot shaft bearings and seals replaced, shaft checked and found to be within factory tolerance
- Track frame bearings and seals replaced
- Track adjuster seals and bearings replaced
- Ripper completely disassembled and cylinders checked and resealed if necessary
- Ripper bushings line bored, new pins, bushings and seals fitted
- Exhaust stack & rain cap replaced
- Air cleaner inlet replaced, cover locks replaced
- Radiator cores cleaned and inspected
- Pins and bushings blade linkages replaced
- New 22" Extreme Service Cat track shoes fitted
- New wear parts on ripper fitted
- New cutting edge kit installed on blade
- Fully serviced with new Cat filters
- Machine sandblasted and painted in Cat colors & New Cat decals fitted
- Caterpillar TA2 Inspection carried out by Cat dealer



Delta Machinery
Voltstraat 19
5753 RL Deurne
The Netherlands

Tel. +31 888 966 966
sales@deltamachinery.nl
www.deltaheavymachinery.com

KvK/CoC 17078066
BTW/VAT/TVA/UST NL802430685B01

Delta Machinery is a member of Van Dijk Heavy Equipment BV. All our services, supplies and transactions are subject to the terms of Van Dijk Heavy Equipment BV filed with the Chamber of Commerce in Eindhoven, the Netherlands under number 17078066 dated November 21th, 2012. On request we will send a copy free of charge. The information transmitted is intended only for use by the addressee and may contain confidential and/or privileged material.

Ref No. : E05228
Brand : Caterpillar
Model : D9T

Year : 2010
Hours : 22227.00
Tyres/UC : 80 %

Serial No. : RJS01481
Weight : 59700.00 kg



Delta Machinery
Voltstraat 19
5753 RL Deurne
The Netherlands

Tel. +31 888 966 966
sales@deltamachinery.nl
www.deltaheavymachinery.com

KvK/CoC 17078066
BTW/VAT/TVA/UST NL802430685B01

Delta Machinery is a member of Van Dijk Heavy Equipment BV. All our services, supplies and transactions are subject to the terms of Van Dijk Heavy Equipment BV filed with the Chamber of Commerce in Eindhoven, the Netherlands under number 17078066 dated November 21th, 2012. On request we will send a copy free of charge. The information transmitted is intended only for use by the addressee and may contain confidential and/or privileged material.

Ref No. : E05228
 Brand : Caterpillar
 Model : D9T

Year : 2010
 Hours : 22227.00
 Tyres/UC : 80 %

Serial No. : RJS01481
 Weight : 59700.00 kg



Delta Machinery
 Voltstraat 19
 5753 RL Deurne
 The Netherlands

Tel. +31 888 966 966
 sales@deltamachinery.nl
 www.deltaheavymachinery.com

KvK/CoC 17078066
 BTW/VAT/TVA/UST NL802430685B01

Delta Machinery is a member of Van Dijk Heavy Equipment BV. All our services, supplies and transactions are subject to the terms of Van Dijk Heavy Equipment BV filed with the Chamber of Commerce in Eindhoven, the Netherlands under number 17078066 dated November 21th, 2012. On request we will send a copy free of charge. The information transmitted is intended only for use by the addressee and may contain confidential and/or privileged material.

Ref No. : E05228
Brand : Caterpillar
Model : D9T

Year : 2010
Hours : 22227.00
Tyres/UC : 80 %

Serial No. : RJS01481
Weight : 59700.00 kg



Delta Machinery
Voltstraat 19
5753 RL Deurne
The Netherlands

Tel. +31 888 966 966
sales@deltamachinery.nl
www.deltaheavymachinery.com

KvK/CoC 17078066
BTW/VAT/TVA/UST NL802430685B01

Delta Machinery is a member of Van Dijk Heavy Equipment BV. All our services, supplies and transactions are subject to the terms of Van Dijk Heavy Equipment BV filed with the Chamber of Commerce in Eindhoven, the Netherlands under number 17078066 dated November 21th, 2012. On request we will send a copy free of charge. The information transmitted is intended only for use by the addressee and may contain confidential and/or privileged material.

Ref No. : E05228
 Brand : Caterpillar
 Model : D9T

Year : 2010
 Hours : 22227.00
 Tyres/UC : 80 %

Serial No. : RJS01481
 Weight : 59700.00 kg



Delta Machinery
 Voltstraat 19
 5753 RL Deurne
 The Netherlands

Tel. +31 888 966 966
 sales@deltamachinery.nl
 www.deltaheavymachinery.com

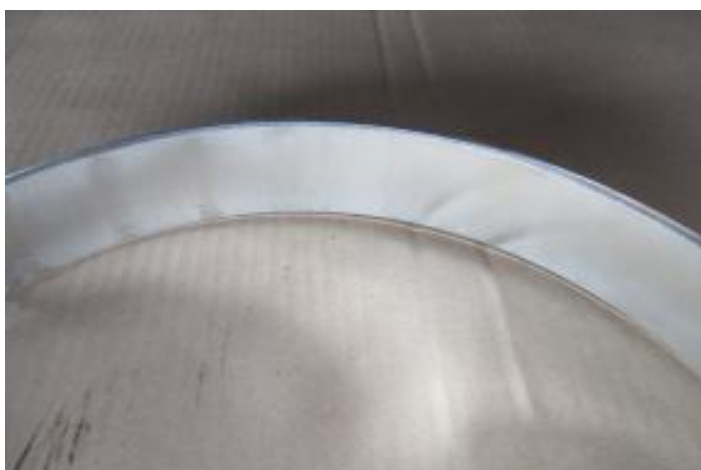
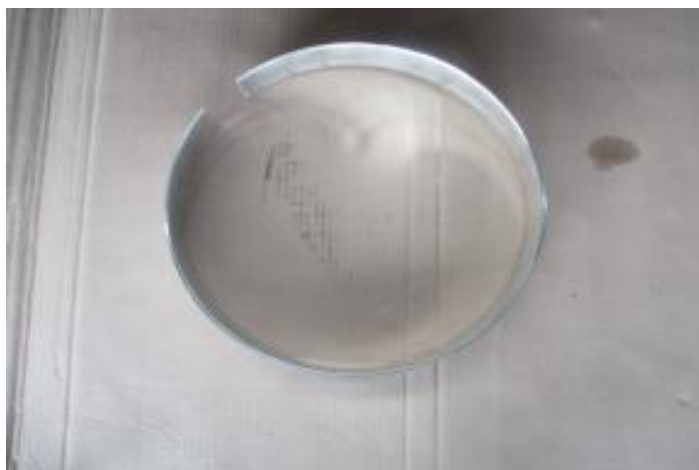
KvK/CoC 17078066
 BTW/VAT/TVA/UST NL802430685B01

Delta Machinery is a member of Van Dijk Heavy Equipment BV. All our services, supplies and transactions are subject to the terms of Van Dijk Heavy Equipment BV filed with the Chamber of Commerce in Eindhoven, the Netherlands under number 17078066 dated November 21th, 2012. On request we will send a copy free of charge. The information transmitted is intended only for use by the addressee and may contain confidential and/or privileged material.

Ref No. : E05228
Brand : Caterpillar
Model : D9T

Year : 2010
Hours : 22227.00
Tyres/UC : 80 %

Serial No. : RJS01481
Weight : 59700.00 kg



Delta Machinery
Voltstraat 19
5753 RL Deurne
The Netherlands

Tel. +31 888 966 966
sales@deltamachinery.nl
www.deltaheavymachinery.com

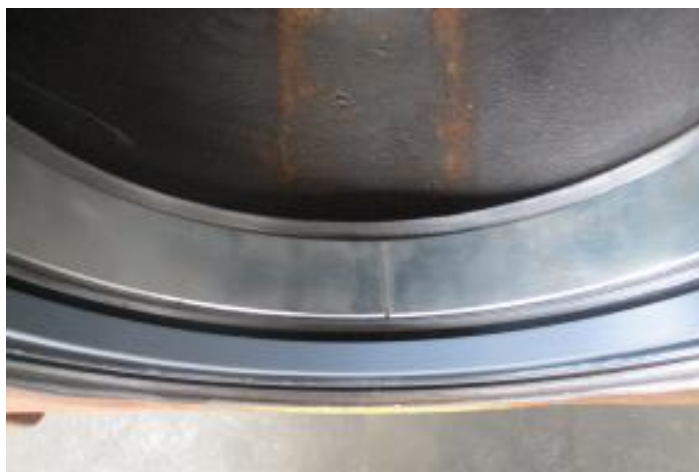
KvK/CoC 17078066
BTW/VAT/TVA/UST NL802430685B01

Delta Machinery is a member of Van Dijk Heavy Equipment BV. All our services, supplies and transactions are subject to the terms of Van Dijk Heavy Equipment BV filed with the Chamber of Commerce in Eindhoven, the Netherlands under number 17078066 dated November 21th, 2012. On request we will send a copy free of charge. The information transmitted is intended only for use by the addressee and may contain confidential and/or privileged material.

Ref No. : E05228
Brand : Caterpillar
Model : D9T

Year : 2010
Hours : 22227.00
Tyres/UC : 80 %

Serial No. : RJS01481
Weight : 59700.00 kg



Delta Machinery
Voltstraat 19
5753 RL Deurne
The Netherlands

Tel. +31 888 966 966
sales@deltamachinery.nl
www.deltaheavymachinery.com

KvK/CoC 17078066
BTW/VAT/TVA/UST NL802430685B01

Delta Machinery is a member of Van Dijk Heavy Equipment BV. All our services, supplies and transactions are subject to the terms of Van Dijk Heavy Equipment BV filed with the Chamber of Commerce in Eindhoven, the Netherlands under number 17078066 dated November 21th, 2012. On request we will send a copy free of charge. The information transmitted is intended only for use by the addressee and may contain confidential and/or privileged material.

Ref No. : E05228
Brand : Caterpillar
Model : D9T

Year : 2010
Hours : 22227.00
Tyres/UC : 80 %

Serial No. : RJS01481
Weight : 59700.00 kg



Delta Machinery
Voltstraat 19
5753 RL Deurne
The Netherlands

Tel. +31 888 966 966
sales@deltamachinery.nl
www.deltaheavymachinery.com

KvK/CoC 17078066
BTW/VAT/TVA/UST NL802430685B01

Delta Machinery is a member of Van Dijk Heavy Equipment BV. All our services, supplies and transactions are subject to the terms of Van Dijk Heavy Equipment BV filed with the Chamber of Commerce in Eindhoven, the Netherlands under number 17078066 dated November 21th, 2012. On request we will send a copy free of charge. The information transmitted is intended only for use by the addressee and may contain confidential and/or privileged material.

Ref No. : E05228

Year : 2010

Serial No. : RJS01481

Brand : Caterpillar

Hours : 22227.00

Weight : 59700.00 kg

Model : D9T

Tyres/UC : 80 %



Delta Machinery
Voltstraat 19
5753 RL Deurne
The Netherlands

Tel. +31 888 966 966
sales@deltamachinery.nl
www.deltaheavymachinery.com

KvK/CoC 17078066
BTW/VAT/TVA/UST NL802430685B01

Delta Machinery is a member of Van Dijk Heavy Equipment BV. All our services, supplies and transactions are subject to the terms of Van Dijk Heavy Equipment BV filed with the Chamber of Commerce in Eindhoven, the Netherlands under number 17078066 dated November 21th, 2012. On request we will send a copy free of charge. The information transmitted is intended only for use by the addressee and may contain confidential and/or privileged material.

Ref No. : E05228
Brand : Caterpillar
Model : D9T

Year : 2010
Hours : 22227.00
Tyres/UC : 80 %

Serial No. : RJS01481
Weight : 59700.00 kg



Delta Machinery
Voltstraat 19
5753 RL Deurne
The Netherlands

Tel. +31 888 966 966
sales@deltamachinery.nl
www.deltaheavymachinery.com

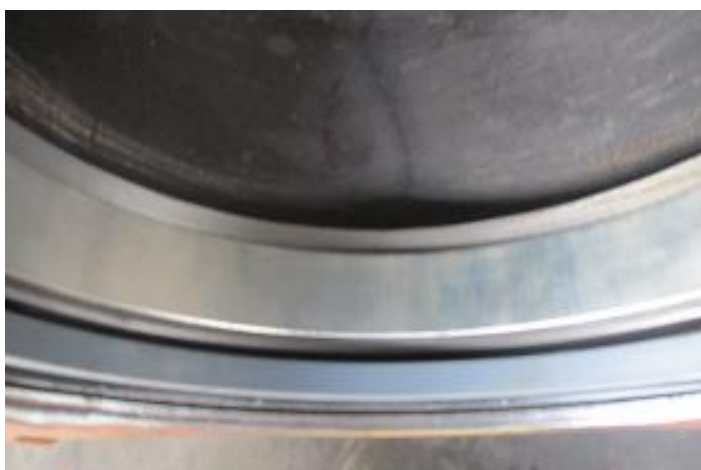
KvK/CoC 17078066
BTW/VAT/TVA/UST NL802430685B01

Delta Machinery is a member of Van Dijk Heavy Equipment BV. All our services, supplies and transactions are subject to the terms of Van Dijk Heavy Equipment BV filed with the Chamber of Commerce in Eindhoven, the Netherlands under number 17078066 dated November 21th, 2012. On request we will send a copy free of charge. The information transmitted is intended only for use by the addressee and may contain confidential and/or privileged material.

Ref No. : E05228
Brand : Caterpillar
Model : D9T

Year : 2010
Hours : 22227.00
Tyres/UC : 80 %

Serial No. : RJS01481
Weight : 59700.00 kg



Delta Machinery
Voltstraat 19
5753 RL Deurne
The Netherlands

Tel. +31 888 966 966
sales@deltamachinery.nl
www.deltaheavyachinery.com

KvK/CoC 17078066
BTW/VAT/TVA/UST NL802430685B01

Delta Machinery is a member of Van Dijk Heavy Equipment BV. All our services, supplies and transactions are subject to the terms of Van Dijk Heavy Equipment BV filed with the Chamber of Commerce in Eindhoven, the Netherlands under number 17078066 dated November 21th, 2012. On request we will send a copy free of charge. The information transmitted is intended only for use by the addressee and may contain confidential and/or privileged material.

Ref No. : E05228
Brand : Caterpillar
Model : D9T

Year : 2010
Hours : 22227.00
Tyres/UC : 80 %

Serial No. : RJS01481
Weight : 59700.00 kg



Delta Machinery
Voltstraat 19
5753 RL Deurne
The Netherlands

Tel. +31 888 966 966
sales@deltamachinery.nl
www.deltaheavymachinery.com

KvK/CoC 17078066
BTW/VAT/TVA/UST NL802430685B01

Delta Machinery is a member of Van Dijk Heavy Equipment BV. All our services, supplies and transactions are subject to the terms of Van Dijk Heavy Equipment BV filed with the Chamber of Commerce in Eindhoven, the Netherlands under number 17078066 dated November 21th, 2012. On request we will send a copy free of charge. The information transmitted is intended only for use by the addressee and may contain confidential and/or privileged material.

Ref No. : E05228
Brand : Caterpillar
Model : D9T

Year : 2010
Hours : 22227.00
Tyres/UC : 80 %

Serial No. : RJS01481
Weight : 59700.00 kg



Delta Machinery
Voltstraat 19
5753 RL Deurne
The Netherlands

Tel. +31 888 966 966
sales@deltamachinery.nl
www.deltaheavyachinery.com

KvK/CoC 17078066
BTW/VAT/TVA/UST NL802430685B01

Delta Machinery is a member of Van Dijk Heavy Equipment BV. All our services, supplies and transactions are subject to the terms of Van Dijk Heavy Equipment BV filed with the Chamber of Commerce in Eindhoven, the Netherlands under number 17078066 dated November 21th, 2012. On request we will send a copy free of charge. The information transmitted is intended only for use by the addressee and may contain confidential and/or privileged material.

Ref No. : E05228
Brand : Caterpillar
Model : D9T

Year : 2010
Hours : 22227.00
Tyres/UC : 80 %

Serial No. : RJS01481
Weight : 59700.00 kg



Delta Machinery
Voltstraat 19
5753 RL Deurne
The Netherlands

Tel. +31 888 966 966
sales@deltamachinery.nl
www.deltaheavymachinery.com

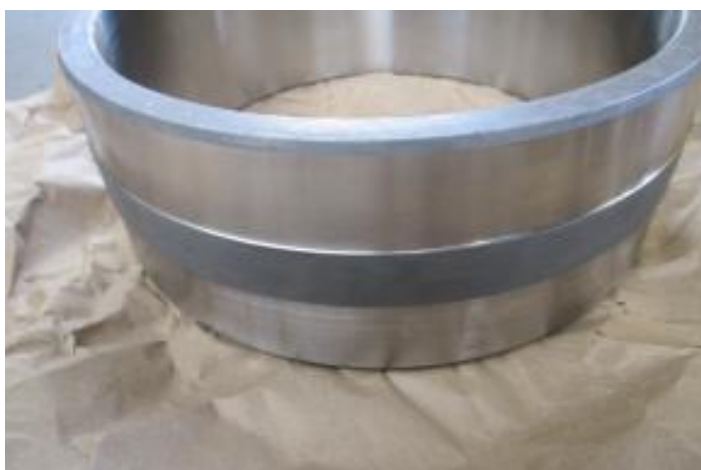
KvK/CoC 17078066
BTW/VAT/TVA/UST NL802430685B01

Delta Machinery is a member of Van Dijk Heavy Equipment BV. All our services, supplies and transactions are subject to the terms of Van Dijk Heavy Equipment BV filed with the Chamber of Commerce in Eindhoven, the Netherlands under number 17078066 dated November 21th, 2012. On request we will send a copy free of charge. The information transmitted is intended only for use by the addressee and may contain confidential and/or privileged material.

Ref No. : E05228
Brand : Caterpillar
Model : D9T

Year : 2010
Hours : 22227.00
Tyres/UC : 80 %

Serial No. : RJS01481
Weight : 59700.00 kg



Delta Machinery
Voltstraat 19
5753 RL Deurne
The Netherlands

Tel. +31 888 966 966
sales@deltamachinery.nl
www.deltaheavymachinery.com

KvK/CoC 17078066
BTW/VAT/TVA/UST NL802430685B01

Delta Machinery is a member of Van Dijk Heavy Equipment BV. All our services, supplies and transactions are subject to the terms of Van Dijk Heavy Equipment BV filed with the Chamber of Commerce in Eindhoven, the Netherlands under number 17078066 dated November 21th, 2012. On request we will send a copy free of charge. The information transmitted is intended only for use by the addressee and may contain confidential and/or privileged material.

Ref No. : E05228

Year : 2010

Serial No. : RJS01481

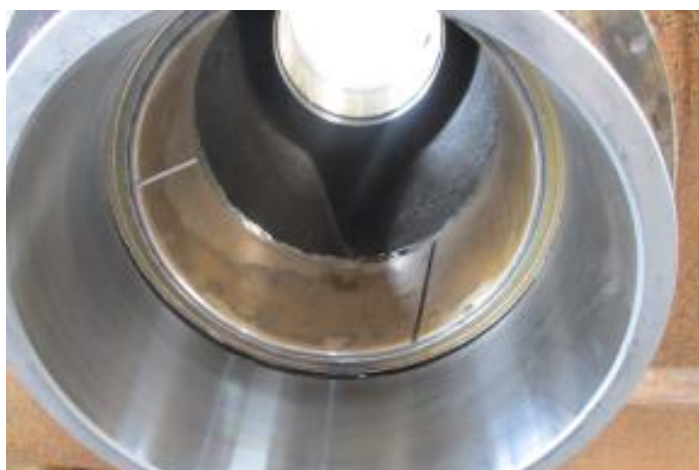
Brand : Caterpillar

Hours : 22227.00

Weight : 59700.00 kg

Model : D9T

Tyres/UC : 80 %



Delta Machinery
Voltstraat 19
5753 RL Deurne
The Netherlands

Tel. +31 888 966 966
sales@deltamachinery.nl
www.deltaheavymachinery.com

KvK/CoC 17078066
BTW/VAT/TVA/UST NL802430685B01

Delta Machinery is a member of Van Dijk Heavy Equipment BV. All our services, supplies and transactions are subject to the terms of Van Dijk Heavy Equipment BV filed with the Chamber of Commerce in Eindhoven, the Netherlands under number 17078066 dated November 21th, 2012. On request we will send a copy free of charge. The information transmitted is intended only for use by the addressee and may contain confidential and/or privileged material.

Ref No. : E05228

Year : 2010

Serial No. : RJS01481

Brand : Caterpillar

Hours : 22227.00

Weight : 59700.00 kg

Model : D9T

Tyres/UC : 80 %



Delta Machinery
Voltstraat 19
5753 RL Deurne
The Netherlands

Tel. +31 888 966 966
sales@deltamachinery.nl
www.deltaheavymachinery.com

KvK/CoC 17078066
BTW/VAT/TVA/UST NL802430685B01

Delta Machinery is a member of Van Dijk Heavy Equipment BV. All our services, supplies and transactions are subject to the terms of Van Dijk Heavy Equipment BV filed with the Chamber of Commerce in Eindhoven, the Netherlands under number 17078066 dated November 21th, 2012. On request we will send a copy free of charge. The information transmitted is intended only for use by the addressee and may contain confidential and/or privileged material.

Ref No. : E05228
Brand : Caterpillar
Model : D9T

Year : 2010
Hours : 22227.00
Tyres/UC : 80 %

Serial No. : RJS01481
Weight : 59700.00 kg



Delta Machinery
Voltstraat 19
5753 RL Deurne
The Netherlands

Tel. +31 888 966 966
sales@deltamachinery.nl
www.deltaheavymachinery.com

KvK/CoC 17078066
BTW/VAT/TVA/UST NL802430685B01

Delta Machinery is a member of Van Dijk Heavy Equipment BV. All our services, supplies and transactions are subject to the terms of Van Dijk Heavy Equipment BV filed with the Chamber of Commerce in Eindhoven, the Netherlands under number 17078066 dated November 21th, 2012. On request we will send a copy free of charge. The information transmitted is intended only for use by the addressee and may contain confidential and/or privileged material.

Ref No. : E05228
Brand : Caterpillar
Model : D9T

Year : 2010
Hours : 22227.00
Tyres/UC : 80 %

Serial No. : RJS01481
Weight : 59700.00 kg



Delta Machinery
Voltstraat 19
5753 RL Deurne
The Netherlands

Tel. +31 888 966 966
sales@deltamachinery.nl
www.deltaheavymachinery.com

KvK/CoC 17078066
BTW/VAT/TVA/UST NL802430685B01

Delta Machinery is a member of Van Dijk Heavy Equipment BV. All our services, supplies and transactions are subject to the terms of Van Dijk Heavy Equipment BV filed with the Chamber of Commerce in Eindhoven, the Netherlands under number 17078066 dated November 21th, 2012. On request we will send a copy free of charge. The information transmitted is intended only for use by the addressee and may contain confidential and/or privileged material.

Ref No. : E05228

Year : 2010

Serial No. : RJS01481

Brand : Caterpillar

Hours : 22227.00

Weight : 59700.00 kg

Model : D9T

Tyres/UC : 80 %



Delta Machinery
Voltstraat 19
5753 RL Deurne
The Netherlands

Tel. +31 888 966 966
sales@deltamachinery.nl
www.deltaheavymachinery.com

KvK/CoC 17078066
BTW/VAT/TVA/UST NL802430685B01

Delta Machinery is a member of Van Dijk Heavy Equipment BV. All our services, supplies and transactions are subject to the terms of Van Dijk Heavy Equipment BV filed with the Chamber of Commerce in Eindhoven, the Netherlands under number 17078066 dated November 21th, 2012. On request we will send a copy free of charge. The information transmitted is intended only for use by the addressee and may contain confidential and/or privileged material.

Ref No. : E05228
Brand : Caterpillar
Model : D9T

Year : 2010
Hours : 22227.00
Tyres/UC : 80 %

Serial No. : RJS01481
Weight : 59700.00 kg



Delta Machinery
Voltstraat 19
5753 RL Deurne
The Netherlands

Tel. +31 888 966 966
sales@deltamachinery.nl
www.deltaheavymachinery.com

KvK/CoC 17078066
BTW/VAT/TVA/UST NL802430685B01

Delta Machinery is a member of Van Dijk Heavy Equipment BV. All our services, supplies and transactions are subject to the terms of Van Dijk Heavy Equipment BV filed with the Chamber of Commerce in Eindhoven, the Netherlands under number 17078066 dated November 21th, 2012. On request we will send a copy free of charge. The information transmitted is intended only for use by the addressee and may contain confidential and/or privileged material.

Ref No. : E05228
Brand : Caterpillar
Model : D9T

Year : 2010
Hours : 22227.00
Tyres/UC : 80 %

Serial No. : RJS01481
Weight : 59700.00 kg



Delta Machinery
Voltstraat 19
5753 RL Deurne
The Netherlands

Tel. +31 888 966 966
sales@deltamachinery.nl
www.deltaheavymachinery.com

KvK/CoC 17078066
BTW/VAT/TVA/UST NL802430685B01

Delta Machinery is a member of Van Dijk Heavy Equipment BV. All our services, supplies and transactions are subject to the terms of Van Dijk Heavy Equipment BV filed with the Chamber of Commerce in Eindhoven, the Netherlands under number 17078066 dated November 21th, 2012. On request we will send a copy free of charge. The information transmitted is intended only for use by the addressee and may contain confidential and/or privileged material.

Ref No. : E05228
Brand : Caterpillar
Model : D9T

Year : 2010
Hours : 22227.00
Tyres/UC : 80 %

Serial No. : RJS01481
Weight : 59700.00 kg



Delta Machinery
Voltstraat 19
5753 RL Deurne
The Netherlands

Tel. +31 888 966 966
sales@deltamachinery.nl
www.deltaheavymachinery.com

KvK/CoC 17078066
BTW/VAT/TVA/UST NL802430685B01

Delta Machinery is a member of Van Dijk Heavy Equipment BV. All our services, supplies and transactions are subject to the terms of Van Dijk Heavy Equipment BV filed with the Chamber of Commerce in Eindhoven, the Netherlands under number 17078066 dated November 21th, 2012. On request we will send a copy free of charge. The information transmitted is intended only for use by the addressee and may contain confidential and/or privileged material.

Ref No. : E05228
 Brand : Caterpillar
 Model : D9T

Year : 2010
 Hours : 22227.00
 Tyres/UC : 80 %

Serial No. : RJS01481
 Weight : 59700.00 kg



Delta Machinery
 Voltstraat 19
 5753 RL Deurne
 The Netherlands

Tel. +31 888 966 966
 sales@deltamachinery.nl
 www.deltaheavymachinery.com

KvK/CoC 17078066
 BTW/VAT/TVA/UST NL802430685B01

Delta Machinery is a member of Van Dijk Heavy Equipment BV. All our services, supplies and transactions are subject to the terms of Van Dijk Heavy Equipment BV filed with the Chamber of Commerce in Eindhoven, the Netherlands under number 17078066 dated November 21th, 2012. On request we will send a copy free of charge. The information transmitted is intended only for use by the addressee and may contain confidential and/or privileged material.

Ref No. : E05228
Brand : Caterpillar
Model : D9T

Year : 2010
Hours : 22227.00
Tyres/UC : 80 %

Serial No. : RJS01481
Weight : 59700.00 kg



Delta Machinery
Voltstraat 19
5753 RL Deurne
The Netherlands

Tel. +31 888 966 966
sales@deltamachinery.nl
www.deltaheavymachinery.com

KvK/CoC 17078066
BTW/VAT/TVA/UST NL802430685B01

Delta Machinery is a member of Van Dijk Heavy Equipment BV. All our services, supplies and transactions are subject to the terms of Van Dijk Heavy Equipment BV filed with the Chamber of Commerce in Eindhoven, the Netherlands under number 17078066 dated November 21th, 2012. On request we will send a copy free of charge. The information transmitted is intended only for use by the addressee and may contain confidential and/or privileged material.

Ref No. : E05228

Year : 2010

Serial No. : RJS01481

Brand : Caterpillar

Hours : 22227.00

Weight : 59700.00 kg

Model : D9T

Tyres/UC : 80 %



Delta Machinery
Voltstraat 19
5753 RL Deurne
The Netherlands

Tel. +31 888 966 966
sales@deltamachinery.nl
www.deltaheavymachinery.com

KvK/CoC 17078066
BTW/VAT/TVA/UST NL802430685B01

Delta Machinery is a member of Van Dijk Heavy Equipment BV. All our services, supplies and transactions are subject to the terms of Van Dijk Heavy Equipment BV filed with the Chamber of Commerce in Eindhoven, the Netherlands under number 17078066 dated November 21th, 2012. On request we will send a copy free of charge. The information transmitted is intended only for use by the addressee and may contain confidential and/or privileged material.