



## **DISCLAIMER: Second-Hand Plant Condition and Safety**

This document is Jungheinrich Australia Pty Ltd's (**Jungheinrich**) official notice that the second-hand plant offered for sale through this transaction (direct sale or auction) may contain faults or deficiencies that could pose risks to health and safety.

### **Important Information**

#### **Safety & Compliance of the Plant**

Given the plant is second-hand, please be aware it may include wear and tear, or be missing safety features that were not present or required at the time of original manufacture.

Jungheinrich has taken all reasonably practicable steps to identify any faults in the plant. The **enclosed Condition Report** sets out the current condition of this plant, including any identified faults.

While all efforts have been made to identify faults, there may be other faults present that did not show up at time of inspection

#### **Operational Safety Notice**

The plant should not be used until all identified faults have been rectified and the equipment is deemed safe for operation.

It is the responsibility of the purchaser to ensure that the plant is inspected, serviced, and, if necessary, modified to meet current safety standards before use.

By participating in this sale and purchasing the second-hand plant, the purchaser acknowledges receipt of this notice and accepts full responsibility for ensuring the plant is safe for use.

#### **Operating condition of the plant**

Note: this condition report is a safety report only and does not represent overall appearance or operating condition of the plant

For any questions please contact Jungheinrich



# Used Sale Safety & Compliance Check

MHE-000240 / 129635 / Larry Labayo / 13/03/2026 / Jungheinrich / Eje120

Complete

Flagged items	0
Report ID	MHE-000240
Technician Name	Larry Labayo
Conducted on	13/03/2026 10:48 AM AEDT
Branch	Sydney
Unit Details	
Equipment No.	129635
Brand	Jungheinrich
Model	Eje120

## Include Images of the Front, Rear & Sides of the Unit



Photo 1



Photo 2



Photo 3



Photo 4



Photo 5

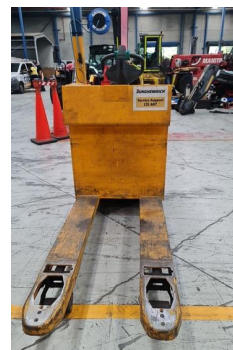


Photo 6



Photo 7

Observations Summary

Truck Category	Category 1 - Pedestrian Type Trucks
Emergency Stop accessible and operational	Yes
Tiller arm switch allows drive function only in prescribed range	Yes
Tiller head crush prevention operational	Yes
Horn/Warning device operational	Yes
Confirm safety systems not bypassed or malfunctioning?	Yes

Additional Observations & Actions

List any other notable defects or faults e.g. ROPS/FOPS damage etc.

Paint. Battery corrosion



Photo 8



Photo 9

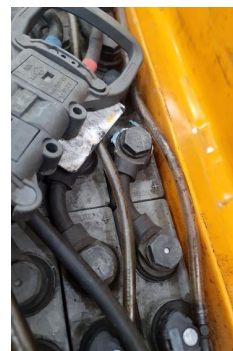


Photo 10

Technician Sign off

Larry Labayo  
13/03/2026 10:51 AM AEDT

## Media summary



Photo 1



Photo 2



Photo 3



Photo 4



Photo 5



Photo 6



Photo 7



Photo 8



Photo 9



Photo 10