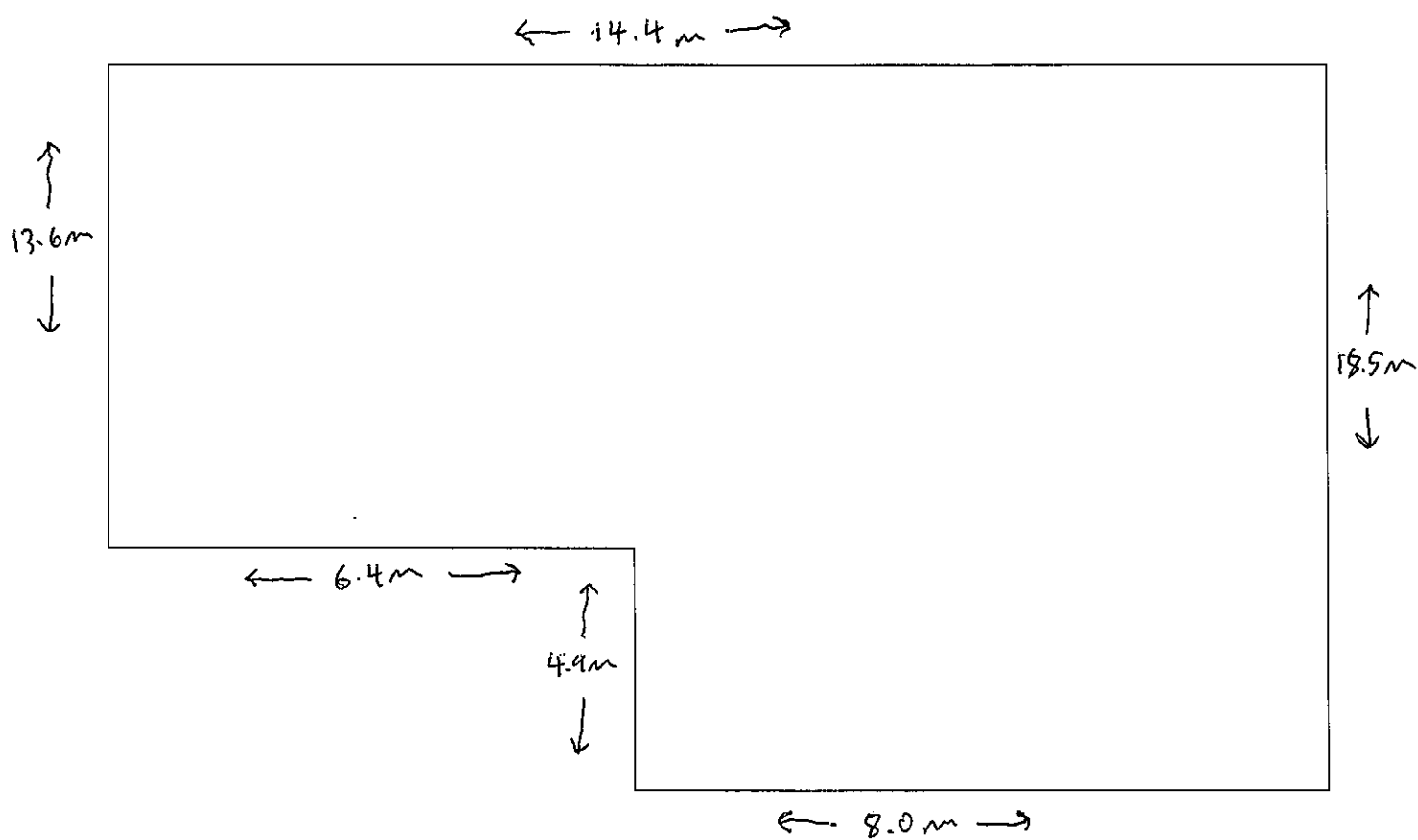


Cali Press Cool Rooms E7



Orchard St.
Production Facility

Unit E7, 35-39 Bourke Rd.
Alexandria

Overview

This is a state of the art facility completed mid 2015. Designed as a temperature controlled food production facility, it has two separate temperature zones; intake and dispatch cool rooms and a larger production space.

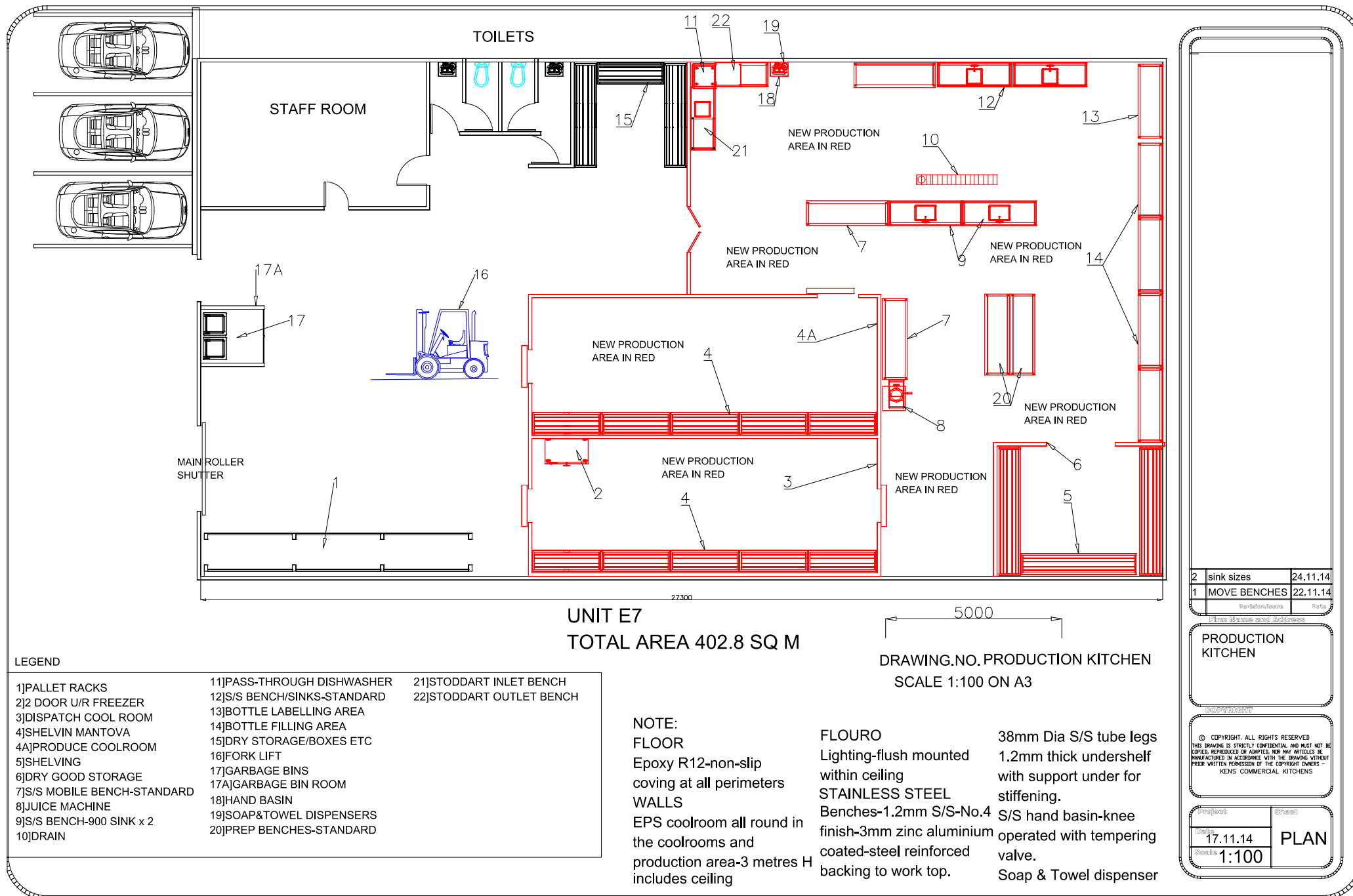
Outside the sealed production area, the premises offers ample storage including pallet storage and bathroom, shower and laundry facilities. A large, newly renovated office space with broadband and phone connection overlooks the production area, with a dedicated staff room beneath.

The premises has three dedicated parking spaces.

The facility is built to comply with all regulatory bodies and meets certification. It is currently approved for use as a food production facility, is licensed as such with the NSWFA (Food Authority) and holds current Organic Certification from the ACO (Australian Certified Organic).

Floorplan

Size	
Total Floorspace:	454sqm
Office & staff room:	103 sqm
Storage, pallet racking and forklift space:	121sqm
Coolrooms	
Production area:	150sqm
Intake:	40sqm
Dispatch:	40sqm



Features

Flooring

Food grade non-slip epoxy flooring throughout sealed to walls

Plumbing

1 x Inlet sink & Spray Arm
1 x Dishwasher
1 x Hand Basin
4 x Prep Sinks
1 x SPS Floor waste and Bucket Trap
1 x Strip Drain with Bucket Trap
1 x Stainless steel hand basin with tempering valve
1 x 315 litre Everyhot Electric Hot Water System

Custom Stainless Benches

5 x 2100mm x 700mm x 900mmht
5 x 2400mm x 700mm x 900mmht workbench
5 x 2100mm x 300mm x 2 tier overshelves
2 x 2100mm x 700 x 900mmht with one centre sink
2 x 2100mm x 700mm x 900mmht with one large 600 x 450 sink
1 x inlet bench 1650mm x 700mm with one sink
1 x outlet bench 1650 x 700mm with baskets

Shelving

Dry storage – 1500mm x 600mm x 4 tier x 1
1050mm x 600mm x 4 tier x 2
1800mm x 600mm x 4 tier x 4
1650 x 600mm x 4 tier x 1
Coolrooms; 1800mm x 600mm x 4 tier x 10

Electrical

Recessed fluorescent IP54 light fittings in prep area
IP65 fluorescent light fittings to cool rooms
Emergency lighting in prep, office and warehouse area
6 x GPO 10A, 240V
5 x Island bench power 10A, 240V
1 x Island bench power 15A, 240V
2 x Dedicated 15A, 240V power outlets for general usage and appliances
1 x Dedicated 20A, 415V connections for cool room compressors, A/C unit and dishwasher
1 x Dedicated 25A, 415V
3 x Dedicated control circuit power
5 x Weatherproof GPO for freezer

Refrigeration

Intake / Despatch
2 x (10m x 4m x 3mh)
2 x 5 HP Sealed Hermetic condensing unit rated at 10.9 Kw @35C ambient conditions
2 x Fan Coil unit, 2 x Electronic thermostat control
2 x 25mm PVC condensate drainage
2 x Interconnecting refrigeration pipe work
2 x Refrigerant gas charge

Pallet Racking

2 x Bay
Bay Width 2750mm
Bay Depth 840mm
Freight Height 4200mm
3 beam levels per bay

Production

150sqm
1 x 6.5 HP Sealed Hermetic condensing unit rated at 17 Kw @35C ambient conditions
2 x Fan Coil unit, 1 x Electronic thermostat control
1 x 25mm PVC condensate drainage
1 x Interconnecting refrigeration pipe work
1 x Refrigerant gas charge

Extra large doors on all coolrooms to allow forklift access