



#### **DISCLAIMER: Second-Hand Plant Condition and Safety**

This document is Jungheinrich Australia Pty Ltd's (Jungheinrich) official notice that the second-hand plant offered for sale through this auction may contain faults or deficiencies that could pose risks to health and safety.

#### **Important Information**

##### **Condition of the Plant**

Given the plant is second-hand, please be aware it may include wear and tear, or be missing safety features that were not present or required at the time of original manufacture.

Jungheinrich has taken all reasonably practicable steps to identify any faults in the plant. The enclosed Condition Report sets out the current condition of this plant, including any identified faults.

Identified specific faults are included in the supplied condition report

##### **Operational Safety Notice**

It is the responsibility of the purchaser to ensure that the plant is inspected, serviced, and, if necessary, modified to meet current safety standards before use. The plant should not be used until all identified faults have been rectified and the equipment is deemed safe for operation.

##### **Manufacturer Information and Records**

Any available records, including:

- information concerning each purpose for which the plant, was designed or manufactured;
- information concerning any conditions necessary to ensure that the plant is without risks to health and safety when used for the purposes for which it was designed or manufactured or when carrying out any activity; and
- calculations, analysis or testing records, including data sheets, test certificates, operation manuals, service reports, and safety manuals or guides are enclosed with the plant. Purchasers are encouraged to review this documentation thoroughly.

By participating in this auction and purchasing the second-hand plant, the purchaser acknowledges receipt of this notice and accepts full responsibility for ensuring the plant is safe for use.

For any questions please contact Jungheinrich

## Incoming Inspection Check

12/11/2024 / 90469374 / 363517 / Sydney / STR / Yes / Yes /

Complete

Serial Number	90469374 12 - NH - KMS - LOW LEVEL ORDER PICKER
Hour Meter Read	4221 hr
Service Job No.	363517
Location	Sydney
Conducted on	12/11/2024 7:35 AM ACDT
Conducted By	Thomas Mullins
Truck Category	STR
Function	
Full function Test & Safety Check	Pass
Truck due for service?	No
Appearance	
Condition of the Unit, Wheels, Paint	Poor

UNIT IN POOR CONDITION NEEDS RESPRAY NEEDS ALL WHEELS REPLACING PAPER CLIP DAMAGEED



Photo 1



Photo 2

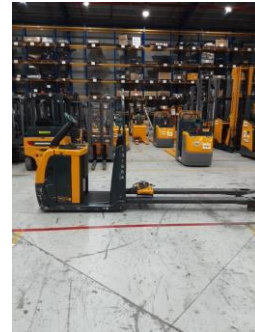


Photo 3

12/11/2024 / 90469374 / 363517 / Sydney / STR / Yes / Yes / 50460100 DRIVE WHEEL  
51367028 JOCKY WHEEL  
50307456 LOAD WHEELS X4  
51009437 PAPER CLIP  
/ 2.5 / No



## Operation

## Test & Tag valid?

Yes

CABLE IS DAMAGED MUST BE REPAIRED



**Has damage or repair work been identified?**

Yes

REFER TO DAMAGED SECTION

**Was any wear & tear identified?**

Yes

**(Internal) Parts required**

DRIVE WHEEL  
JOCKY WHEEL  
LOAD WHEELS X4  
PAPER CLIP

## Media summary



Photo 1



Photo 2

12/11/2024 / 90469374 / 363517 / Sydney / STR / Yes / Yes / 50460100 DRIVE WHEEL  
51367028 JOCKY WHEEL  
50307456 LOAD WHEELS X4  
51009437 PAPER CLIP  
/ 2.5 / No

Private & confidential

12/11/2024 / 90469374 / 363517 / Sydney / STR / Yes / Yes / 50460100 DRIVE WHEEL  
51367028 JOCKY WHEEL  
50307456 LOAD WHEELS X4  
51009437 PAPER CLIP  
/ 2.5 / No



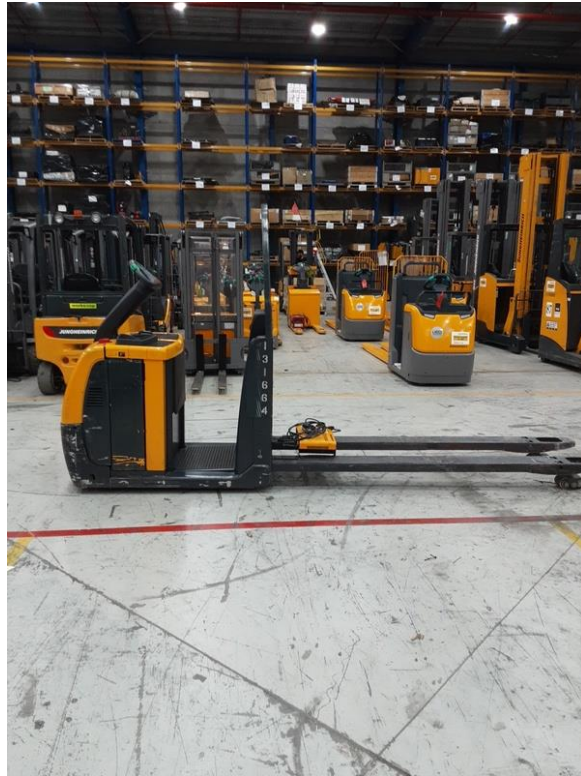


Photo 3



Photo 4

12/11/2024 / 90469374 / 363517 / Sydney / STR / Yes / Yes / 50460100 DRIVE WHEEL  
 51367028 JOCKY WHEEL  
 50307456 LOAD WHEELS X4  
 51009437 PAPER CLIP  
 / 2.5 / No

Private & confidential



Photo 5



Photo 6

12/11/2024 / 90469374 / 363517 / Sydney / STR / Yes / Yes / 50460100 DRIVE WHEEL  
 51367028 JOCKY WHEEL  
 50307456 LOAD WHEELS X4  
 51009437 PAPER CLIP  
 / 2.5 / No

Private & confidential