



DISCLAIMER: Second-Hand Plant Condition and Safety

This document is Jungheinrich Australia Pty Ltd's (**Jungheinrich**) official notice that the second-hand plant offered for sale through this transaction (direct sale or auction) may contain faults or deficiencies that could pose risks to health and safety.

Important Information

Safety & Compliance of the Plant

Given the plant is second-hand, please be aware it may include wear and tear, or be missing safety features that were not present or required at the time of original manufacture.

Jungheinrich has taken all reasonably practicable steps to identify any faults in the plant. The **enclosed Condition Report** sets out the current condition of this plant, including any identified faults.

While all efforts have been made to identify faults, there may be other faults present that did not show up at time of inspection

Operational Safety Notice

The plant should not be used until all identified faults have been rectified and the equipment is deemed safe for operation.

It is the responsibility of the purchaser to ensure that the plant is inspected, serviced, and, if necessary, modified to meet current safety standards before use.

By participating in this sale and purchasing the second-hand plant, the purchaser acknowledges receipt of this notice and accepts full responsibility for ensuring the plant is safe for use.

Operating condition of the plant

Note: this condition report is a safety report only and does not represent overall appearance or operating condition of the plant

For any questions please contact Jungheinrich



Used Sale Safety & Compliance Check

MHE-000314 / 127998 / Melbourne Service / 28/04/2026 /
Jungheinrich / ETV114

Complete

Flagged items	0
Report ID	MHE-000314
Technician Name	Melbourne Service
Conducted on	28/04/2026 10:24 AM AEST
Branch	Melbourne

Unit Details

Equipment No. 127998



Photo 1

Brand

Jungheinrich



Photo 2

Model

ETV114



Photo 3

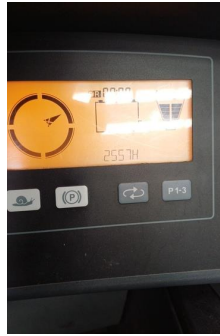


Photo 4

Mast ID

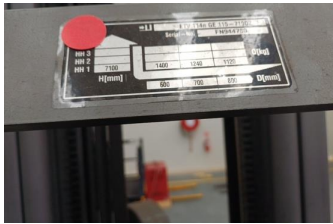


Photo 5

Include Images of the Front, Rear & Sides of the Unit



Photo 6



Photo 7



Photo 8



Photo 9

Observations Summary

Truck Category

Category 5 - Electric Reach Truck

Emergency Stop, Horn/Warning device, lights, reverse alarm and flashing lights operational

Yes

Strobe lamp switch missing

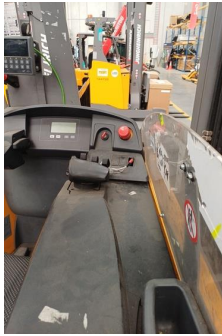


Photo 10

Foot switch allows operation only when depressed

Yes

Seat switch and seat belt operate sequentially (site dependent)

N/A



Photo 11



Photo 12

Mast switch operation for travel speed reduction to 3km/h above specified height

N/A

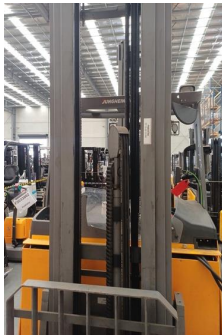


Photo 13

Are brakes and park brake functioning correctly?

Yes

Are tyre treads within limits and/or free from damage?

Yes

Are fork tynes in good condition and within specification?

Yes

Are mast chains in good condition, within specification and working correctly?

Yes



Photo 14



Photo 15

Are all controls inc. lift, tilt & sideshift/auxilliary functions working correctly

Yes

Confirm safety systems not bypassed or malfunctioning?

Yes

Additional Observations & Actions

List any other notable defects or faults e.g. ROPS/FOPS damage etc.

Technician Sign off

Piyal Seneviratne
28/04/2026 10:54 AM AEST

Media summary

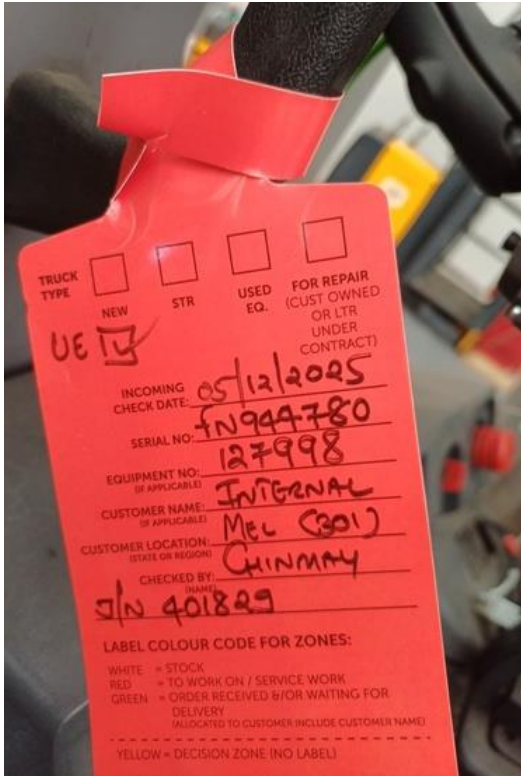


Photo 1



Photo 2



Photo 3

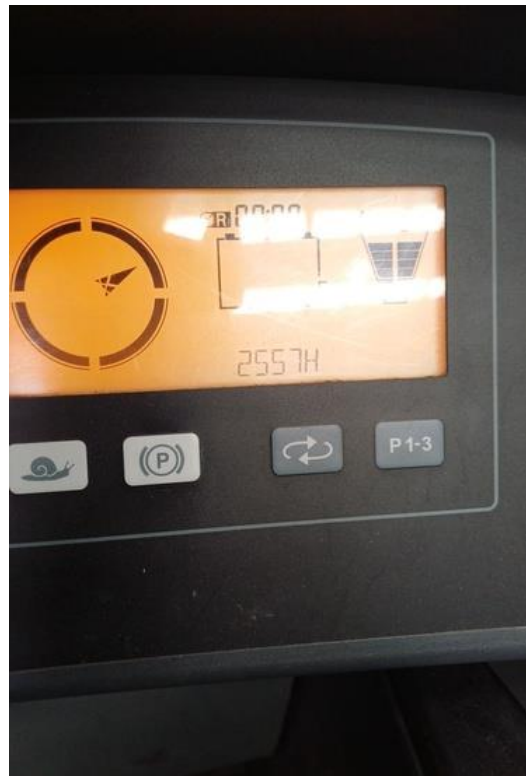


Photo 4



Photo 9



Photo 10



Photo 11



Photo 12



Photo 13



Photo 14



Photo 15