



## **DISCLAIMER: Second-Hand Plant Condition and Safety**

This document is Jungheinrich Australia Pty Ltd's (**Jungheinrich**) official notice that the second-hand plant offered for sale through this transaction (direct sale or auction) may contain faults or deficiencies that could pose risks to health and safety.

### **Important Information**

#### **Safety & Compliance of the Plant**

Given the plant is second-hand, please be aware it may include wear and tear, or be missing safety features that were not present or required at the time of original manufacture.

Jungheinrich has taken all reasonably practicable steps to identify any faults in the plant. The **enclosed** Condition Report sets out the current condition of this plant, including any identified faults.

While all efforts have been made to identify faults, there may be other faults present that did not show up at time of inspection

#### **Operational Safety Notice**

The plant should not be used until all identified faults have been rectified and the equipment is deemed safe for operation.

It is the responsibility of the purchaser to ensure that the plant is inspected, serviced, and, if necessary, modified to meet current safety standards before use.

By participating in this sale and purchasing the second-hand plant, the purchaser acknowledges receipt of this notice and accepts full responsibility for ensuring the plant is safe for use.

#### **Operating condition of the plant**

Note: this condition report is a safety report only and does not represent overall appearance or operating condition of the plant

For any questions please contact Jungheinrich



## Used Sale Safety & Compliance Check

MHE-000299 / 126156 / Melbourne Service / 27/04/2026 /  
Jungheinrich / ETV114

Complete

<b>Flagged items</b>	0
<b>Report ID</b>	MHE-000299
<b>Technician Name</b>	Melbourne Service
<b>Conducted on</b>	27/04/2026 10:35 AM AEST
<b>Branch</b>	Melbourne
<b>Unit Details</b>	
<b>Equipment No.</b>	126156
<b>Brand</b>	Jungheinrich
<b>Model</b>	ETV114
<b>Mast ID</b>	7700

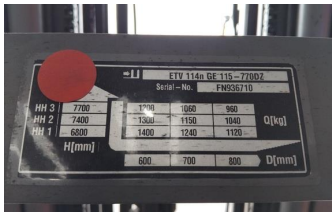


Photo 1

### Include Images of the Front, Rear & Sides of the Unit



Photo 2



Photo 3



Photo 4

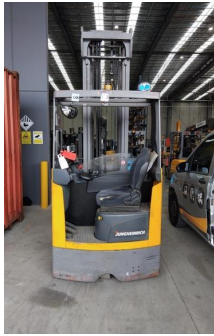


Photo 5



Photo 6



Photo 7

Observations Summary





<b>Truck Category</b>	Category 5 - Electric Reach Truck
<b>Emergency Stop, Horn/Warning device, lights, reverse alarm and flashing lights operational</b>	Yes
<b>Foot switch allows operation only when depressed</b>	Yes
<b>Seat switch and seat belt operate sequentially (site dependent)</b>	N/A
<b>Mast switch operation for travel speed reduction to 3km/h above specified height</b>	Yes
<b>Are brakes and park brake functioning correctly?</b>	Yes
<b>Are tyre treads within limits and/or free from damage?</b>	No
  	
<b>Are fork tynes in good condition and within specification?</b>	Yes
	
<b>Are mast chains in good condition, within specification and working correctly?</b>	Yes



Photo 12

**Are all controls inc. lift, tilt & sideshift/auxilliary functions working correctly**

Yes

**Confirm safety systems not bypassed or malfunctioning?**

Yes

Additional Observations & Actions

List any other notable defects or faults e.g. ROPS/FOPS damage etc.

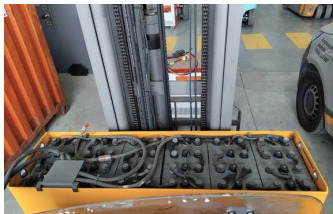


Photo 13

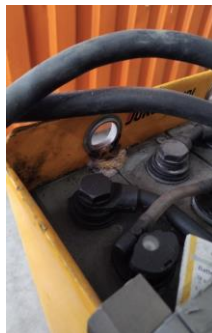


Photo 14



Photo 15



Photo 16



Photo 17



Photo 18

**Technician Sign off**

David Nguyen  
27/04/2026 10:56 AM AEST

## Media summary

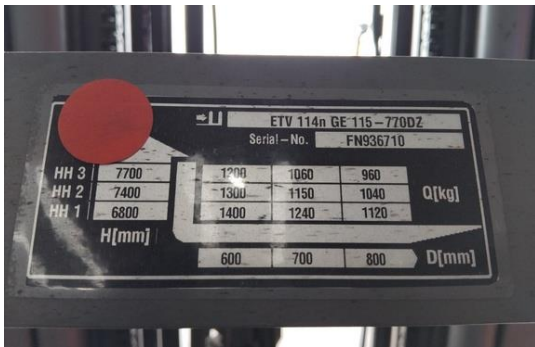


Photo 1



Photo 2



Photo 3



Photo 4



Photo 5



Photo 6



Photo 7



Photo 8



Photo 9



Photo 10



Photo 11



Photo 12

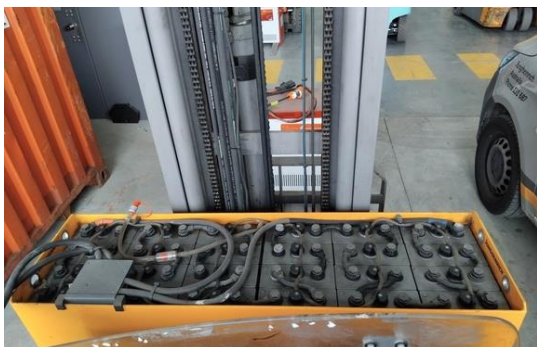


Photo 13



Photo 14



Photo 15



Photo 16



Photo 17



Photo 18