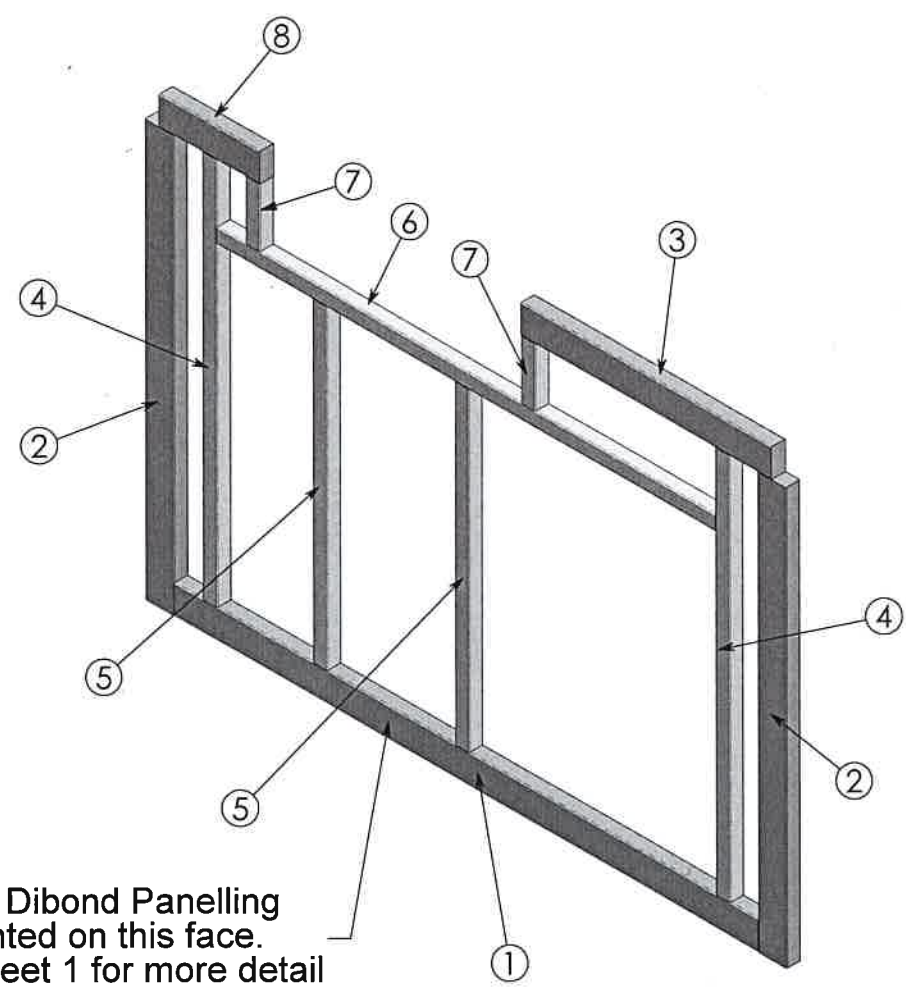


Frame A - Front Wall
Viewed from front of Body Frame

GENERAL NOTES

- 1. REMOVE ALL BURRS AND SHARP CORNERS
- 2. REFER SHEET 2 FOR OVERALL BODY FRAME DRAWING
- 3. SURFACE FINISH: PAINTED WHITE
- 4. QUANTITY: ONE (1) OFF PER APPLIANCE



NOTE: Dibond Panelling
mounted on this face.
Refer Sheet 1 for more detail

NOTE: Refer Sheet 3 for full cutting list.

8	1	Aluminium Extrusion - 80 x 40 x 6 Slot	280
7	2	Aluminium Extrusion - 40 x 40 x 3 Slot	165
6	1	Aluminium Extrusion - 40 x 40 x 3 Slot	1400
5	2	Aluminium Extrusion - 40 x 40 x 3 Slot	885
4	2	Aluminium Extrusion - 40 x 40 x 3 Slot	1090
3	1	Aluminium Extrusion - 80 x 40 x 6 Slot	705
2	2	Aluminium Extrusion - 80 x 40 x 6 Slot	1170
1	1	Aluminium Extrusion - 80 x 40 x 6 Slot	1640
ITEM NO.	QTY.	DESCRIPTION	LENGTH

<div>REV A 06/03/09 UPDATE DRAWING FROM SKETCH. S.W. BY APP'D</div>				<div>TOLERANCES UNLESS OTHERWISE STATED</div> <div>FABRICATED DIM. ± 2.0mm</div> <div>MACHINED DIM. ± 0.5mm</div> <div>ANGULAR DIM. ± 1.0°</div>		<div>SEM Fire and Rescue</div> <div>vehicles ■ design ■ technology ■ solutions</div>		<div>THIRD ANGLE ORTHOGRAPHIC</div> <div>DO NOT SCALE</div>		<div>DRAWING CHECKS</div> <div>DRAWN 06/03/09</div> <div>DATE S.W.</div> <div>APP'D</div> <div>DATE 06/03/09</div>		<div>SES 6 x 6 ALL TERRAIN BODY FRAME AND CLADDING</div> <div>56975M</div>		<div>A3</div> <div>SCALE 1:15</div>		<div>SHEET NUMBER 3/6</div> <div>REVISION A</div>	
---------------------------------------------------------------------	--	--	--	--------------------------------------------------------------------------------------------------------------------------------------------------	--	--------------------------------------------------------------------------------------	--	-------------------------------------------------------------	--	--------------------------------------------------------------------------------------------------------------------	--	----------------------------------------------------------------------------	--	-------------------------------------	--	---------------------------------------------------	--

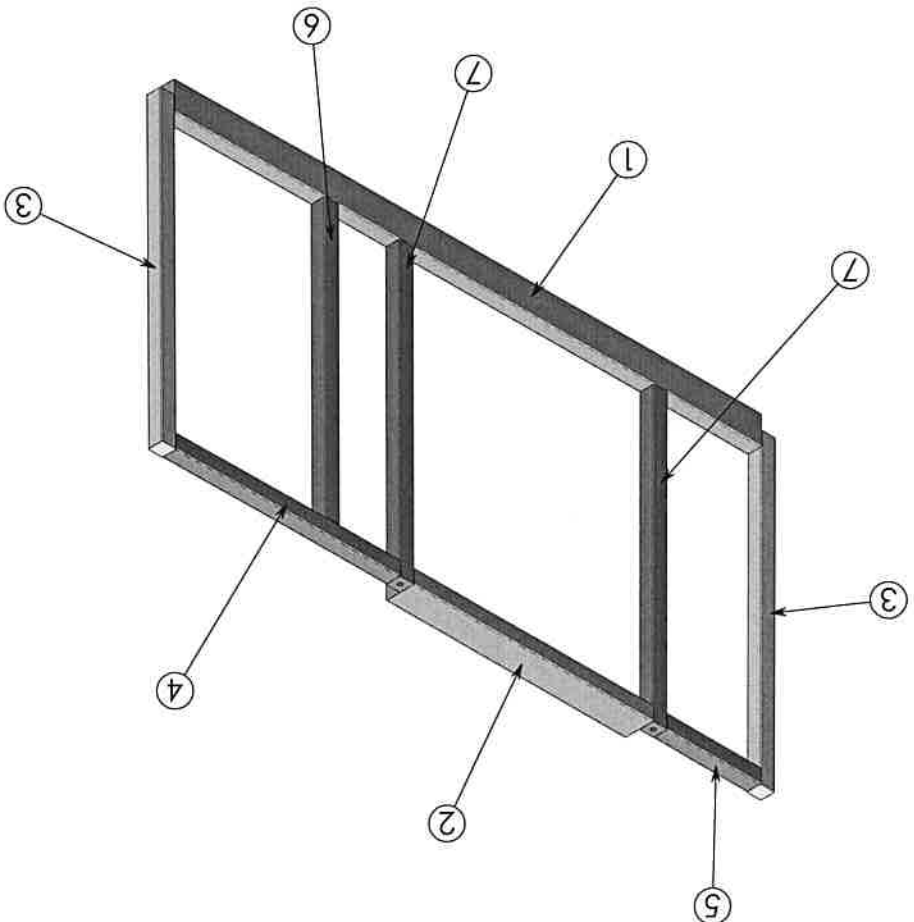
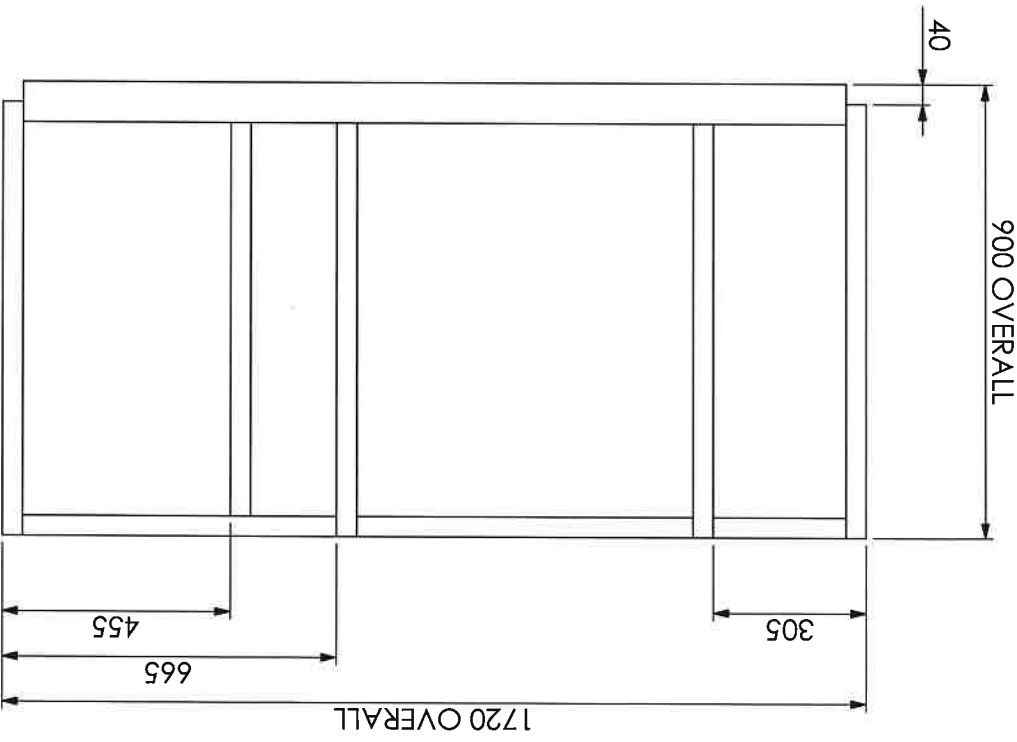
- GENERAL NOTES
1. REMOVE ALL BURRS AND SHARP CORNERS

2. REFER SHEET 2 FOR OVERALL BODY FRAME DRAWING

3. SURFACE FINISH: PAINTED WHITE

4. QUANTITY: ONE (1) OFF PER APPLIANCE

Frame B - Internal Wall between through lockers
Viewed from front of Body Frame



NOTE: Refer Sheet 3 for full cutting list

REV. DATE		A 06/03/09		UPDATE DRAWING FROM SKETCH	
DESCRIPTION		S.W.		BY	
REVISION		S.W.		BY	
TOLERANCES UNLESS OTHERWISE STATED		FABRICATED DIM.		MACHINED DIM.	
± 2.0mm		± 0.5mm		± 1.0°	
ANGULAR DIM.		FIRE AND RESCUE		VEHICLES ■ DESIGN ■ TECHNOLOGY ■ SOLUTIONS	
THIRD ANGLE		DO NOT SCALE		DATE 06/03/09	
DRAWING CHECKS		DATE 06/03/09		S.W.	
APPROVED		DATE 06/03/09		S.W.	
SCALE 1:15		SHEET NUMBER 4		REVISION A	
SES 6 X 6 ALL TERRAIN BODY FRAME AND CLADDING		56975M		A	

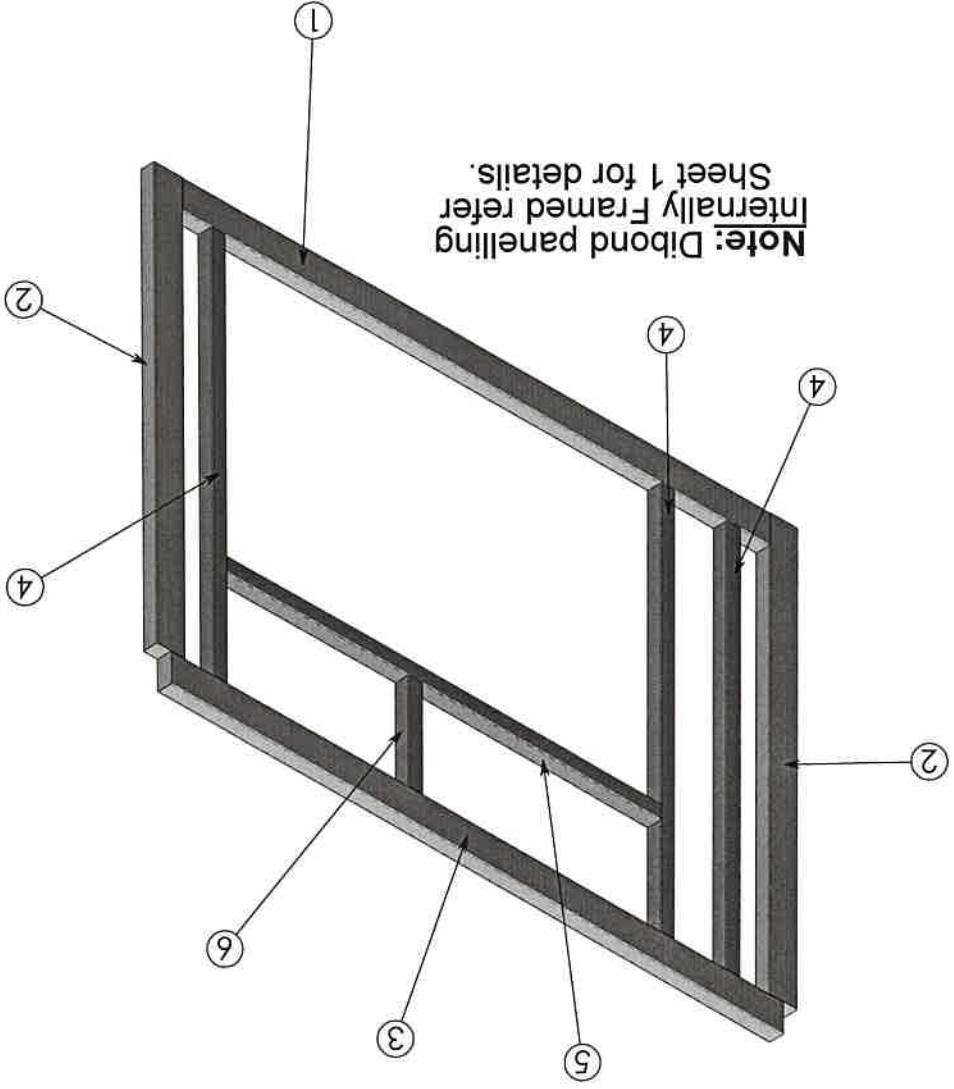
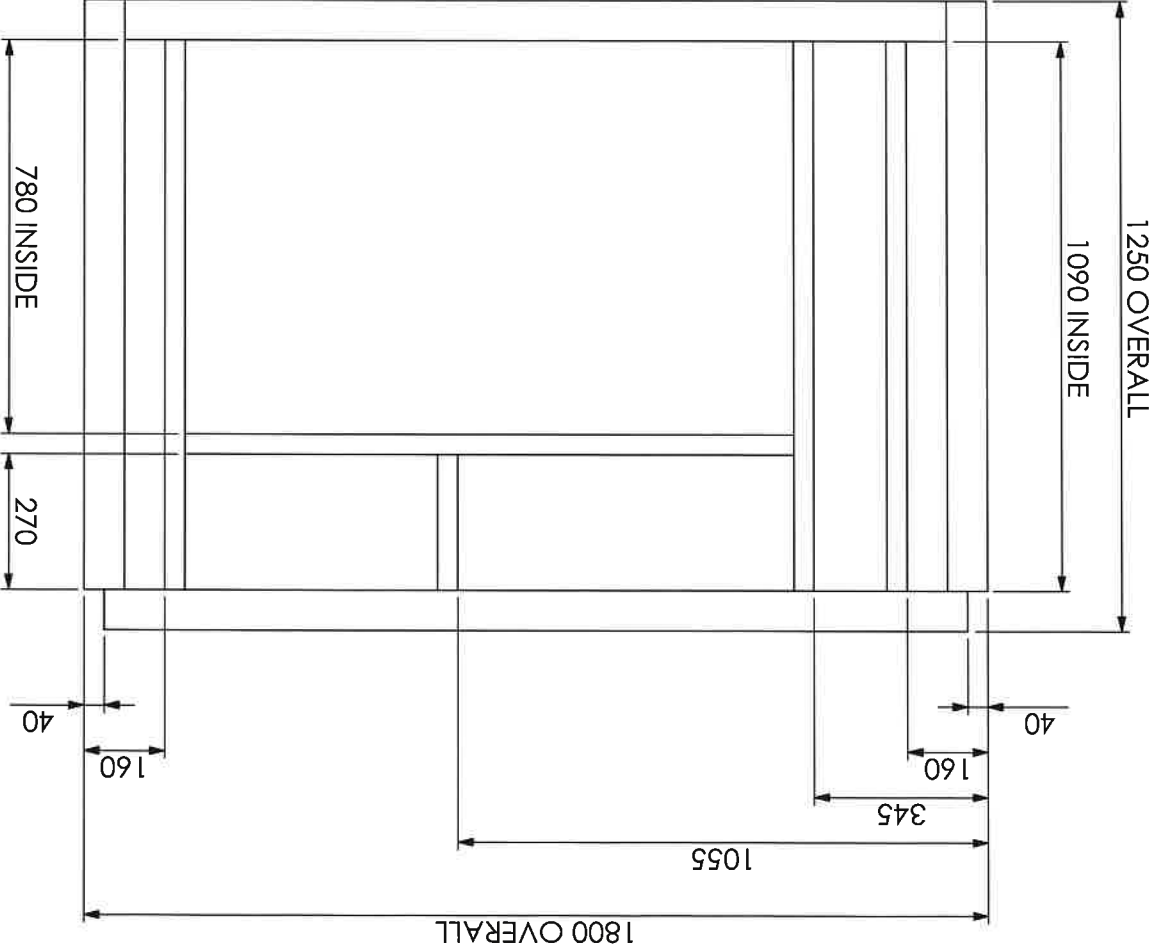
- GENERAL NOTES
1. REMOVE ALL BURRS AND SHARP CORNERS

2. REFER SHEET 2 FOR OVERALL BODY FRAME DRAWING

3. SURFACE FINISH: PAINTED WHITE

4. QUANTITY: ONE (1) OFF PER APPLIANCE

Frame C - Internal Wall between through and rear locker
Viewed from front of Body Frame



Note: Dibond panelling
Internally Framed refer
Sheet 1 for details.

REV. DATE		DESCRIPTION		REVISION	
A	06/03/09	UPDATE DRAWING FROM SKETCH.			
S.W.		BY		APP'D	
5/1		5/1		5/1	
TOLERANCES UNLESS OTHERWISE STATED					
FABRICATED DIM. ± 2.0mm					
MACHINED DIM. ± 0.5mm					
ANGULAR DIM. ± 1.0°					
SEM Fire and Rescue vehicles ■ design ■ technology ■ solutions					
THIRD ANGLE ORTHOGRAPHIC					
DO NOT SCALE					
DRAWING CHECKS		DATE		DATE	
DRAWN 06/03/09		S.W.		5/1	
APP'D		DATE		5/1	
56975M		SCALE 1:15		SHEET NUMBER A3	
SES 6 x 6 ALL TERRAIN BODY FRAME AND CLADDING		REVISION		A	

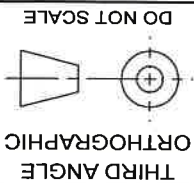
NOTE: Refer Sheet 3 for full cutting list.

ITEM NO.	QTY.	DESCRIPTION	LENGTH
1	1	Aluminium Extrusion - 80 x 40 x 6 Slot	1640
2	2	Aluminium Extrusion - 80 x 40 x 6 Slot	1170
3	1	Aluminium Extrusion - 80 x 40 x 6 Slot	1720
4	3	Aluminium Extrusion - 40 x 40 x 4 Slot	1090
5	1	Aluminium Extrusion - 40 x 40 x 4 Slot	1215
6	1	Aluminium Extrusion - 40 x 40 x 4 Slot	270

REV	DATE	DESCRIPTION	BY	APP'D
A	06/03/09	UPDATE DRAWING FROM SKETCH.	S.W.	<i>[Signature]</i>

TOLERANCES
UNLESS OTHERWISE STATED

FABRICATED DIM.	±	2.0mm
MACHINED DIM.	±	0.5mm
ANGULAR DIM.	±	1.0°



DRAWING CHECKS	DRAWN 06/03/09	DATE	S.W.	APPD	DATE
				5/4/09	17/3/09

SES 6 x 6 ALL TERRAIN BODY FRAME AND CLADDING	SCALE 1:20 6 A
A3 SHEET NUMBER REVISION	6 A

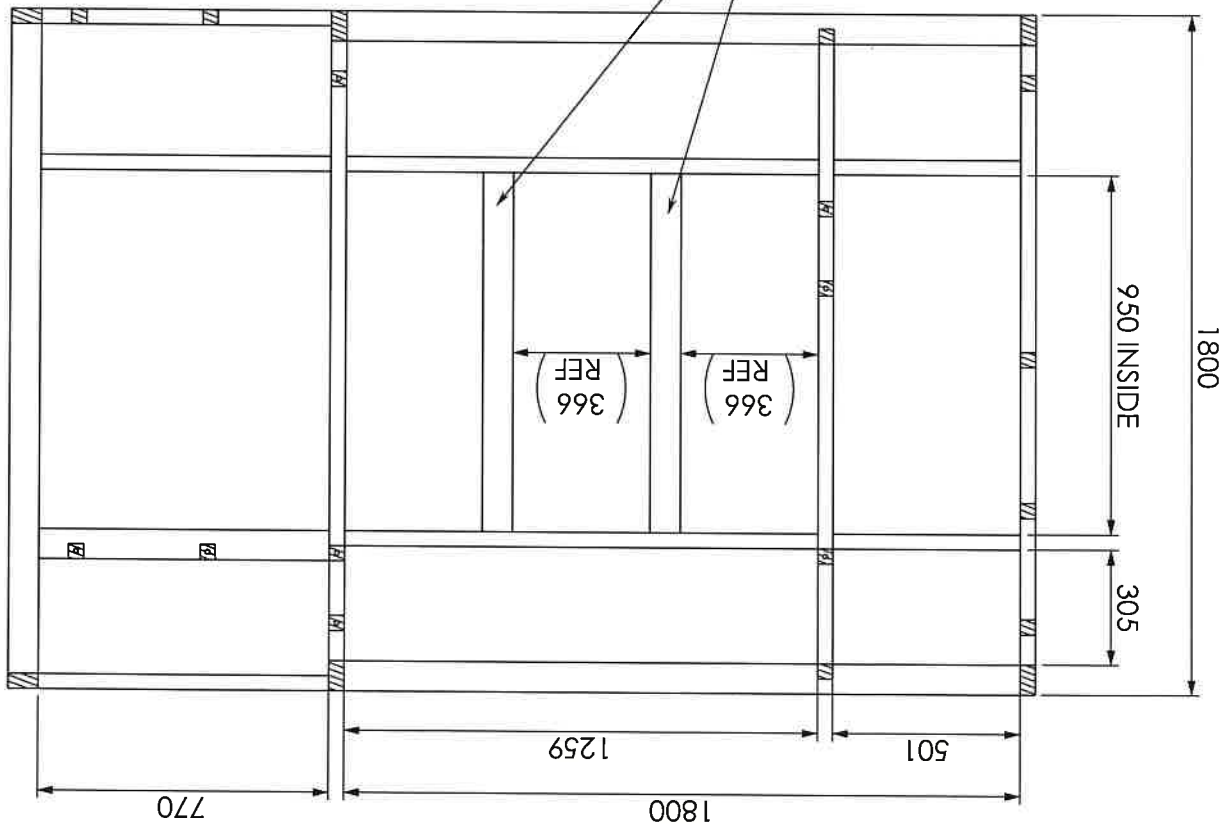
GENERAL NOTES

1. REMOVE ALL BURRS AND SHARP CORNERS
2. REFER SHEET 2 FOR OVERALL BODY FRAME DRAWING AND ITEM NO'S
3. SURFACE FINISH: PAINTED WHITE
4. QUANTITY: ONE (1) OFF PER APPLIANCE

SECTION D

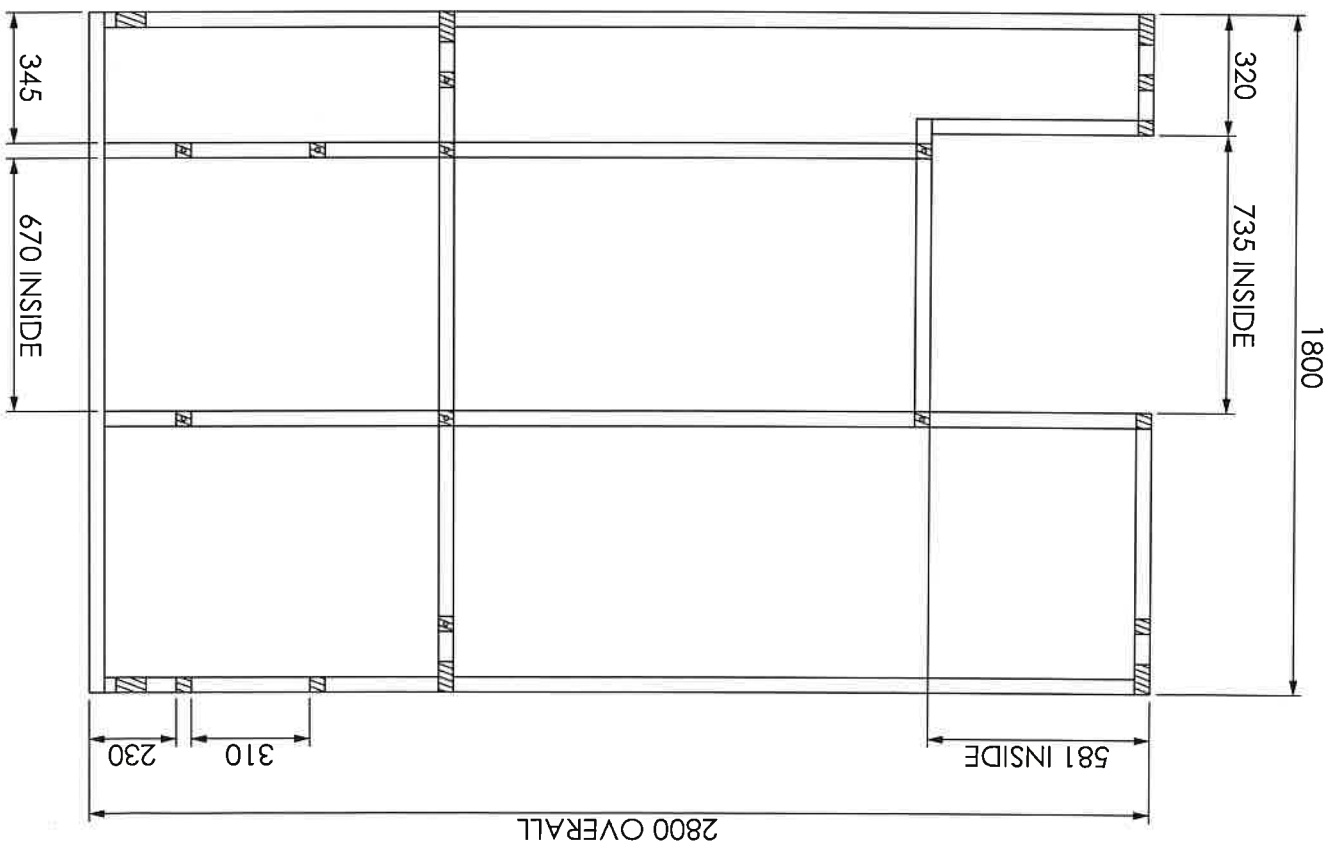
**Flooring members
Viewed from above**

80 x 40 FLOOR MEMBERS
ADJUSTABLE TO SUIT
KUBOTA GENERATOR



SECTION E

Roofing members
Viewed from below



85051D SES RESCUE ALL TERRAIN 6X6

PRODUCT BOM STANDARD & ACTUAL COSTING REPORT - FULL EXPLOSION OF ALL LEVELS (SAME VERSION THROUGH)

Part: 85051D

SES ALL TERRAIN 6X6 RESCUE

Version:

Batch Size:

1

		Part		Description	Part Type	Part	Unit
Level	Parent	OpNo	Number			Manufactured Purchased Phantom	
1	85051D	0	11109P	CAB CHS L/CRUISER MDT5750	FINISHED MISC VEH	Manufactured	1.000000
1	85051D	0	15052P	STO EXTING DRY CHEM 1KG	FINISHED MISC VEH	Manufactured	1.000000
1	85051D	0	15098P	STO TOTE BOX WHITE 21 LT NP002	FINISHED MISC VEH	Manufactured	4.000000
1	85051D	0	15191P	STO TOTE BOX LID WHITE NP004	FINISHED MISC VEH	Manufactured	4.000000
1	85051D	0	15564P	STO EXTING DRY CHEM 1.5KG ABE	FINISHED MISC VEH	Manufactured	1.000000
1	85051D	0	18612P	SLIDE CHAMBRELAN RA7R 550MM	FINISHED MISC VEH	Manufactured	2.000000
1	85051D	0	18618P	SLIDE CHAMBRELAN RA5R 450MM	FINISHED MISC VEH	Manufactured	2.000000
1	85051D	0	18623P	SLIDE CHAMBRELAN RA5R 550MM	FINISHED MISC VEH	Manufactured	2.000000
1	85051D	0	18648P	SLIDE CHAMBRELAN RA5R 700MM	FINISHED MISC VEH	Manufactured	2.000000
1	85051D	0	19344P	SWITCH ELE MICRO MS.32301	FINISHED MISC VEH	Manufactured	1.000000
1	85051D	0	19353P	BKT SQUARE ROOF BK30057	FINISHED MISC VEH	Manufactured	2.000000
1	85051D	0	19913P	M COVER 3758 PROFILE PVC BLACK	FINISHED MISC VEH	Manufactured	1.000000
1	85051D	0	19923P	T-NUT 3947 M6 FOR 40MM PROFILE	FINISHED MISC VEH	Manufactured	40.000000
1	85051D	0	19924P	T-NUT 6154 M8 FOR 40MM PROFILE	FINISHED MISC VEH	Manufactured	300.000000
1	85051D	0	19968P	CABLE TIE CROSS BINDER E3	FINISHED MISC VEH	Manufactured	25.000000
1	85051D	0	19974P	LAMP UNIT FD 34127. 3 x 1000W	FINISHED MISC VEH	Manufactured	1.000000
1	85051D	0	19975P	BKT ONLY BF 33227	FINISHED MISC VEH	Manufactured	1.000000
1	85051D	0	19977P	LIGHTMAST TELESCOPIC CH.3800NE	FINISHED MISC VEH	Manufactured	1.000000
1	85051D	0	20004P	ALUM ANGLE 32 X 32 X 3	FINISHED MISC VEH	Manufactured	0.800000
1	85051D	0	20006P	ALUM ANGLE 40 X 40 X 3	FINISHED MISC VEH	Manufactured	15.500000
1	85051D	0	20024P	ALUM FLAT 25 X 6	FINISHED MISC VEH	Manufactured	4.500000
1	85051D	0	20071P	ALUM RHS 40 X 40 X 3	FINISHED MISC VEH	Manufactured	0.200000
1	85051D	0	25092P	BUZZER REV HELLA 6023 12-30V	FINISHED MISC VEH	Manufactured	1.000000
1	85051D	0	25107P	ADAPTOR BOX LAN EZI BOX1	FINISHED MISC VEH	Manufactured	1.000000
1	85051D	0	25144P	DIODE NO IN 5404	FINISHED MISC VEH	Manufactured	8.000000
1	85051D	0	25152P	ELE FREQUENCY METER RQ-48-F1	FINISHED MISC VEH	Manufactured	1.000000
1	85051D	0	25177P	ELE GROMMET POLY GLAND GN20	FINISHED MISC VEH	Manufactured	1.000000
1	85051D	0	25178P	ELE H/METER HELLA 7050 MARINE	FINISHED MISC VEH	Manufactured	1.000000
1	85051D	0	25214P	ELE RELAY 12V C/O	FINISHED MISC VEH	Manufactured	8.000000
1	85051D	0	25217P	ELE RELAY HELLA 4973 CONNECTOR	FINISHED MISC VEH	Manufactured	10.000000
1	85051D	0	25248P	ELE SW C62 B2 SQ/DEE@FAI ROD	FINISHED MISC VEH	Manufactured	1.000000
1	85051D	0	25316P	ELE TERM RAIL LEGLANT535F6	FINISHED MISC VEH	Manufactured	1.000000
1	85051D	0	25533P	ELE TERM BATTERY POS MA14 HD	FINISHED MISC VEH	Manufactured	2.000000
1	85051D	0	25534P	ELE TERM BATTERY NEG MA14 HD	FINISHED MISC VEH	Manufactured	2.000000
1	85051D	0	25600P	ELE FUSE HOLD BLADE 544020/10	FINISHED MISC VEH	Manufactured	1.000000
1	85051D	0	25628P	ELE SW ROCK BRTX 58328-62 24V	FINISHED MISC VEH	Manufactured	1.000000
1	85051D	0	25691P	LAMP HELLA 2859 FLOOD	FINISHED MISC VEH	Manufactured	3.000000
1	85051D	0	25731P	LAMP BRITAX SL88/G WARNING	FINISHED MISC VEH	Manufactured	2.000000
1	85051D	0	25751P	LAMP BRITAX SL88/R WARNING	FINISHED MISC VEH	Manufactured	2.000000
1	85051D	0	25752P	LAMP BRITAX SL88/A WARNING	FINISHED MISC VEH	Manufactured	1.000000
1	85051D	0	25805P	ELE TERM END PLATE	FINISHED MISC VEH	Manufactured	4.000000
1	85051D	0	25814P	LAMP FLURO DAPRO FBFL13 24V	FINISHED MISC VEH	Manufactured	2.000000
1	85051D	0	25860P	ELE POLY CARB BOX H2863 SEALED	FINISHED MISC VEH	Manufactured	5.000000
1	85051D	0	25882P	AERIAL BASE & LEAD MB12-00-43	FINISHED MISC VEH	Manufactured	2.000000
1	85051D	0	25893P	ELE GROMMET POLY GLAND GN16	FINISHED MISC VEH	Manufactured	4.000000
1	85051D	0	25894P	ELE GROMMET POLY GLAND GN32	FINISHED MISC VEH	Manufactured	2.000000
1	85051D	0	25896P	LAMP FEDERAL GS2 RED STROBE	FINISHED MISC VEH	Manufactured	1.000000
1	85051D	0	26009P	DUCTING 25 X 25MM CD2525WH	FINISHED MISC VEH	Manufactured	6.000000
1	85051D	0	26021P	CONN & WEDGE DT06-2S-W	FINISHED MISC VEH	Manufactured	4.000000
1	85051D	0	26024P	AERIAL BASE & LEAD MB12 10MT	FINISHED MISC VEH	Manufactured	2.000000
1	85051D	0	26025P	CONN & WEDGE DT04-4P-W	FINISHED MISC VEH	Manufactured	7.000000

85051D SES RESCUE ALL TERRAIN 6X6

1	85051D	0 26026P	CONN & WEDGE DT06-4S-W	FINISHED MISC VEH	Manufactured	EA	7.000000
1	85051D	0 26027P	CONN & WEDGE DT06-6S-W	FINISHED MISC VEH	Manufactured	EA	5.000000
1	85051D	0 26028P	CONN & WEDGE DT04-6P-W	FINISHED MISC VEH	Manufactured	EA	3.000000
1	85051D	0 26040P	CONN & WEDGE DTM04-2P-W	FINISHED MISC VEH	Manufactured	EA	1.000000
1	85051D	0 26041P	CONN & WEDGE DTM06-2S-W	FINISHED MISC VEH	Manufactured	EA	1.000000
1	85051D	0 26049P	ELE STUD TYPE JUNCTION BLOCK	FINISHED MISC VEH	Manufactured	EA	1.000000
1	85051D	0 26050P	CONN DRC16-40S IN LINE	FINISHED MISC VEH	Manufactured	EA	1.000000
1	85051D	0 26053P	ELE GROMMET POLY GLAND GN25	FINISHED MISC VEH	Manufactured	EA	1.000000
1	85051D	0 26054P	CONN & WEDGE DT04-2P-W	FINISHED MISC VEH	Manufactured	EA	4.000000
1	85051D	0 26080P	CONN C/B RADIO UHF 119 RFI	FINISHED MISC VEH	Manufactured	EA	2.000000
1	85051D	0 26133P	DUCTING 40 X 25MM CD4025WH	FINISHED MISC VEH	Manufactured	EA	2.000000
1	85051D	0 26146P	ELE FUSE HOLDER MIDI ELF-498	FINISHED MISC VEH	Manufactured	EA	2.000000
1	85051D	0 26147P	ELE FUSE MIDI ELF-30 30AMP	FINISHED MISC VEH	Manufactured	EA	1.000000
1	85051D	0 26153P	CONN & WEDGE DT06-12SA-W	FINISHED MISC VEH	Manufactured	EA	2.000000
1	85051D	0 26157P	LAMP HELLA 2053 R/AMB LED S/M	FINISHED MISC VEH	Manufactured	EA	6.000000
1	85051D	0 26171P	CONN DRC16-24S IN LINE	FINISHED MISC VEH	Manufactured	EA	1.000000
1	85051D	0 26186P	CONN BNC-113 RG58 RFI	FINISHED MISC VEH	Manufactured	EA	2.000000
1	85051D	0 26194P	CONN DRC12-40PA PANEL MOUNT	FINISHED MISC VEH	Manufactured	EA	1.000000
1	85051D	0 26273P	RESISTOR 22 OHM 25 WATT	FINISHED MISC VEH	Manufactured	EA	2.000000
1	85051D	0 26427P	CONN DRC24-BT BOOT	FINISHED MISC VEH	Manufactured	EA	1.000000
1	85051D	0 26439P	ELE FUSE MIDI ELF-100M 100AMP	FINISHED MISC VEH	Manufactured	EA	1.000000
1	85051D	0 26454P	CONN DRC12-24PA PANEL MNT	FINISHED MISC VEH	Manufactured	EA	1.000000
1	85051D	0 26478P	LAMP OSRAM MAP COPILOT-L-24	FINISHED MISC VEH	Manufactured	EA	1.000000
1	85051D	0 26507P	CONN PLUG 4 WAY QK4BL FEMALE	FINISHED MISC VEH	Manufactured	EA	1.000000
1	85051D	0 26511P	LAMP FEDERAL GS2 BLUE STROBE	FINISHED MISC VEH	Manufactured	EA	1.000000
1	85051D	0 26532P	C/BREAKER MAN/RES ET1610-H2-10	FINISHED MISC VEH	Manufactured	EA	2.000000
1	85051D	0 26533P	C/BREAKER MAN/RES ET1610-H2-15	FINISHED MISC VEH	Manufactured	EA	8.000000
1	85051D	0 26534P	C/BREAKER MAN/RES ET1610-H2-20	FINISHED MISC VEH	Manufactured	EA	4.000000
1	85051D	0 26535P	C/BREAKER MAN/RES ET1610-H2-25	FINISHED MISC VEH	Manufactured	EA	1.000000
1	85051D	0 26536P	C/BREAKER JUMPER ETX222 232 01	FINISHED MISC VEH	Manufactured	EA	20.000000
1	85051D	0 26537P	C/BREAKER T/BLOCK ETX22223302	FINISHED MISC VEH	Manufactured	EA	17.000000
1	85051D	0 26571P	ELE TERM MALE PIN	FINISHED MISC VEH	Manufactured	EA	24.000000
1	85051D	0 26598P	FLASHING HEADLIGHT 12V ALT	FINISHED MISC VEH	Manufactured	EA	1.000000
1	85051D	0 26610P	BATT/GUARD 2000/200A 12V	FINISHED MISC VEH	Manufactured	EA	1.000000
1	85051D	0 26653P	LAMP HELLA 2559 LICENCE PLATE	FINISHED MISC VEH	Manufactured	EA	2.000000
1	85051D	0 26730P	CONN & WEDGE DT04-12PA-LO12-W	FINISHED MISC VEH	Manufactured	EA	1.000000
1	85051D	0 26854P	CONN MOUNT BKT DT 1011-026-020	FINISHED MISC VEH	Manufactured	EA	20.000000
1	85051D	0 26898P	ELE SW MICRO TZ-8111	FINISHED MISC VEH	Manufactured	EA	1.000000
1	85051D	0 26911P	LAMP NARVA 91674 LED LIC/PLATE	FINISHED MISC VEH	Manufactured	EA	1.000000
1	85051D	0 26913P	LAMP HELLA 2133 LED AMBER	FINISHED MISC VEH	Manufactured	EA	2.000000
1	85051D	0 26914P	LAMP HELLA 2366 LED STOP/TAIL	FINISHED MISC VEH	Manufactured	EA	2.000000
1	85051D	0 26924P	LAMP LED RED 238-8122	FINISHED MISC VEH	Manufactured	EA	2.000000
1	85051D	0 26925P	LAMP LED AMBER 238-8144	FINISHED MISC VEH	Manufactured	EA	1.000000
1	85051D	0 26951P	ELE GROMMET BLIND LR 13	FINISHED MISC VEH	Manufactured	EA	1.000000
1	85051D	0 27001P	ELE SW ROCK 58328-11B 12V BRX	FINISHED MISC VEH	Manufactured	EA	2.000000
1	85051D	0 27002P	ELE SW ROCK 58328-12B 12V BRX	FINISHED MISC VEH	Manufactured	EA	1.000000
1	85051D	0 27008P	DIODE PLUG IN 3 AMP PID6A	FINISHED MISC VEH	Manufactured	EA	6.000000
1	85051D	0 27061P	LAMP LED GREEN 238-8138	FINISHED MISC VEH	Manufactured	EA	2.000000
1	85051D	0 27075P	ELE TRIMPOT 1K OHMS PT8135	FINISHED MISC VEH	Manufactured	EA	1.000000
1	85051D	0 27080P	ENCLOSURE 160 X 135 X 77	FINISHED MISC VEH	Manufactured	EA	1.000000
1	85051D	0 27092P	CABLE TIE CROSS BINDER E3	FINISHED MISC VEH	Manufactured	EA	50.000000
1	85051D	0 27114P	LAMP FEDERAL STROBE DRIVER 50W	FINISHED MISC VEH	Manufactured	EA	1.000000
1	85051D	0 27131P	LAMP COVERS 170 SERIES CLEAR	FINISHED MISC VEH	Manufactured	EA	1.000000
1	85051D	0 27133P	AERIAL ASSY BKT KIT 10-30 SER	FINISHED MISC VEH	Manufactured	EA	2.000000
1	85051D	0 27137P	LAMP FLURO LT3L/24V 18W SINGLE	FINISHED MISC VEH	Manufactured	EA	1.000000
1	85051D	0 27143P	LAMP SCANLIGHT ABL-1220.27 24V	FINISHED MISC VEH	Manufactured	EA	2.000000
1	85051D	0 27144P	ELE SW 40AMP C/COVER MAINS/OFF	FINISHED MISC VEH	Manufactured	EA	1.000000
1	85051D	0 27154P	LAMP STROBE 820-003R 12-24VOLT	FINISHED MISC VEH	Manufactured	EA	1.000000
1	85051D	0 27164P	BATTERY OPTIMA OD34R 800CCA	FINISHED MISC VEH	Manufactured	EA	2.000000
1	85051D	0 27167P	ELE GROMMET BLIND LR 25	FINISHED MISC VEH	Manufactured	EA	1.000000
1	85051D	0 27168P	RADIO SES CUSTOMER SUPPLIED	FINISHED MISC VEH	Manufactured	EA	1.000000

85051D SES RESCUE ALL TERRAIN 6X6

1	85051D	0 27169P	ANTENNA HF SES CUST SUPPLIED	FINISHED MISC VEH	Manufactured	EA	1.000000
1	85051D	0 27191P	ANTENNA HF BASE MOUNT CUST/SUP	FINISHED MISC VEH	Manufactured	EA	1.000000
1	85051D	0 27278P	RCB 1330 12V 18LED-5B5R1BE1RE1	FINISHED MISC VEH	Manufactured	EA	1.000000
1	85051D	0 27279P	HOOK KIT 70 SERIES 2HK-0114-12	FINISHED MISC VEH	Manufactured	EA	1.000000
1	85051D	0 27280P	SIREN HAZ 1000 SER 809-001-200	FINISHED MISC VEH	Manufactured	EA	1.000000
1	85051D	0 27281P	SIREN SPEAKER HAZ 810-011 100W	FINISHED MISC VEH	Manufactured	EA	2.000000
1	85051D	0 27282P	LED GRILL DASH COVERT SURF MT	FINISHED MISC VEH	Manufactured	EA	3.000000
1	85051D	0 27283P	LED GRILL DASH COVERT SURF MTB	FINISHED MISC VEH	Manufactured	EA	3.000000
1	85051D	0 27284P	LED GRILL DASH COVERT 12VDC RB	FINISHED MISC VEH	Manufactured	EA	1.000000
1	85051D	0 27285P	BEZEL 4 B DIAMONDBACK 6 X 4	FINISHED MISC VEH	Manufactured	EA	1.000000
1	85051D	0 27286P	BEZEL 4 R DIAMONDBACK 6 X 4	FINISHED MISC VEH	Manufactured	EA	1.000000
1	85051D	0 27287P	AERIAL BKT ASY KIT 10-30 SERIE	FINISHED MISC VEH	Manufactured	EA	2.000000
1	85051D	0 27301P	GEN KUBOTA GL6000 LOW BOY	FINISHED MISC VEH	Manufactured	EA	1.000000
1	85051D	0 27306P	BATTERY DUAL CONTROL UNIT IRD	FINISHED MISC VEH	Manufactured	EA	1.000000
1	85051D	0 27309P	VOLTAGE BOOSTERS REDARC V1180D	FINISHED MISC VEH	Manufactured	EA	2.000000
1	85051D	0 27310P	LAMP KIT 170 SERIES 12V-17023	FINISHED MISC VEH	Manufactured	EA	1.000000
1	85051D	0 27315P	BEZEL KIT CHROME FOR 4"X6"	FINISHED MISC VEH	Manufactured	EA	2.000000
1	85051D	0 27316P	BATTERY HOLD DOWN-KIT BHD1 7"	FINISHED MISC VEH	Manufactured	EA	1.000000
1	85051D	0 27517P	LOOM BODY SES 6 X 6 RESCUE SES	FINISHED MISC VEH	Manufactured	EA	1.000000
1	85051D	0 27518P	LOOM CHASSIS 6X6 RESCUE SES	FINISHED MISC VEH	Manufactured	EA	1.000000
1	85051D	0 30174P	BUSH RED BRASS BSP 1/4" X 1/8"	FINISHED MISC VEH	Manufactured	EA	2.000000
1	85051D	0 30201P	ELB BRASS BSPM 3/8"X 1/2" BARB	FINISHED MISC VEH	Manufactured	EA	2.000000
1	85051D	0 30216P	ELB BRASS M&F BSP 1/2"	FINISHED MISC VEH	Manufactured	EA	1.000000
1	85051D	0 30347P	M/END BRASS BSPM 1/2"X1/2"	FINISHED MISC VEH	Manufactured	EA	3.000000
1	85051D	0 30355P	M/END BRASS BSPM 1/4" X 5/16"	FINISHED MISC VEH	Manufactured	EA	2.000000
1	85051D	0 30357P	M/END BSPM 1/8" X 1/4"	FINISHED MISC VEH	Manufactured	EA	2.000000
1	85051D	0 30367P	NIPPLE BRASS BSP 1"	FINISHED MISC VEH	Manufactured	EA	1.000000
1	85051D	0 30368P	NIPPLE BRASS BSP 1/2"	FINISHED MISC VEH	Manufactured	EA	1.000000
1	85051D	0 30492P	SOCKET S/S BSP 1/4"	FINISHED MISC VEH	Manufactured	EA	3.000000
1	85051D	0 30576P	VALVE BALL 12MM MAXIFLOW	FINISHED MISC VEH	Manufactured	EA	1.000000
1	85051D	0 30691P	UNION PFM-3 10MM X 1/4" BSP	FINISHED MISC VEH	Manufactured	EA	1.000000
1	85051D	0 30814P	BREATHER 1" GAL F1	FINISHED MISC VEH	Manufactured	EA	1.000000
1	85051D	0 30815P	ADAPT HOSE TAP 18MM BRMBF	FINISHED MISC VEH	Manufactured	EA	1.000000
1	85051D	0 30816P	M/END BRASS BSPF 1/2" X 1/2"	FINISHED MISC VEH	Manufactured	EA	1.000000
1	85051D	0 30817P	ELB COMP LUGGED 1/2 FI X 1/2 C	FINISHED MISC VEH	Manufactured	EA	1.000000
1	85051D	0 30818P	LEVER TYPE HOSE BIB TAP 12MM	FINISHED MISC VEH	Manufactured	EA	1.000000
1	85051D	0 31379P	PLUG PLASTIC 3/4"	FINISHED MISC VEH	Manufactured	EA	1.000000
1	85051D	0 35154P	BOLT J H/DOWN BHD9 BATT 10	FINISHED MISC VEH	Manufactured	EA	4.000000
1	85051D	0 35237P	CLAMP HOSE MH4 TRIDON	FINISHED MISC VEH	Manufactured	EA	12.000000
1	85051D	0 35240P	CLAMP HOSE W/D NO 0 H4040	FINISHED MISC VEH	Manufactured	EA	1.000000
1	85051D	0 35241P	CLAMP HOSE ABA W/D NO 00 H4039	FINISHED MISC VEH	Manufactured	EA	5.000000
1	85051D	0 35244P	CLAMP HOSE W/D NO 2 H4042	FINISHED MISC VEH	Manufactured	EA	2.000000
1	85051D	0 35245P	CLAMP HOSE W/D NO 3 H4043	FINISHED MISC VEH	Manufactured	EA	2.000000
1	85051D	0 35251P	CLAMP MIKALOR 60-63	FINISHED MISC VEH	Manufactured	EA	2.000000
1	85051D	0 35280P	CLIP SADDLE 25MM	FINISHED MISC VEH	Manufactured	EA	2.000000
1	85051D	0 35290P	NUT EYE M20	FINISHED MISC VEH	Manufactured	EA	4.000000
1	85051D	0 35386P	ROLL PIN 3/16 x 11/2	FINISHED MISC VEH	Manufactured	EA	5.000000
1	85051D	0 35678P	CLIP POLY/COAT BLK 507769 32MM	FINISHED MISC VEH	Manufactured	EA	2.000000
1	85051D	0 35713P	CLIP C/F NEOPRENE WASHER R4011	FINISHED MISC VEH	Manufactured	EA	2.000000
1	85051D	0 35714P	CLIP C/F SEALING WASHER RW0511	FINISHED MISC VEH	Manufactured	EA	1.000000
1	85051D	0 35715P	CLIP C/F RIVIT ON STL C11/31-4	FINISHED MISC VEH	Manufactured	EA	1.000000
1	85051D	0 35716P	CLIP C/F STUD 1/4 DOME D1109	FINISHED MISC VEH	Manufactured	EA	1.000000
1	85051D	0 40071P	AIR VENT LOUVRE 100 X 100	FINISHED MISC VEH	Manufactured	EA	4.000000
1	85051D	0 40072P	AIR VENT ROTATING PLASTIC	FINISHED MISC VEH	Manufactured	EA	4.000000
1	85051D	0 40260P	HANDLE 94-120	FINISHED MISC VEH	Manufactured	EA	4.000000
1	85051D	0 40428P	HINGE PIANO S/S 38MM X 18X1.8	FINISHED MISC VEH	Manufactured	EA	1.000000
1	85051D	0 40438P	HOSE CLEAR BEVERAGE 19MM	FINISHED MISC VEH	Manufactured	EA	1.500000
1	85051D	0 40446P	HOSE FUEL 3/16"	FINISHED MISC VEH	Manufactured	EA	2.200000
1	85051D	0 40460P	HOSE REINFORCED CLEAR 12MM	FINISHED MISC VEH	Manufactured	EA	5.000000
1	85051D	0 40547P	NYLON TUBE BLACK 6MM NYLON 11	FINISHED MISC VEH	Manufactured	EA	2.000000
1	85051D	0 40645P	RUBBER BLACK RIBBED MATTING	FINISHED MISC VEH	Manufactured	EA	5.000000

85051D SES RESCUE ALL TERRAIN 6X6

1	85051D	0 40660P	RUBBER DOOR STOP 25MM	FINISHED MISC VEH	Manufactured	EA	4.000000
1	85051D	0 40662P	RUBBER DOOR STOP 38MM	FINISHED MISC VEH	Manufactured	EA	4.000000
1	85051D	0 40664P	RUBBER ELB 2" @ AIR CLEANER	FINISHED MISC VEH	Manufactured	EA	1.000000
1	85051D	0 40682P	RUBBER P/WELD SEAL 60-004 FRP	FINISHED MISC VEH	Manufactured	EA	10.800000
1	85051D	0 40820P	BEARING SHORELUBE SMF-2416	FINISHED MISC VEH	Manufactured	EA	10.000000
1	85051D	0 40914P	MUDFLAP SEM 250 X 300	FINISHED MISC VEH	Manufactured	EA	2.000000
1	85051D	0 41265P	UNISTRUT NUT P4007 8MM	FINISHED MISC VEH	Manufactured	EA	4.000000
1	85051D	0 41268P	CATCH 9/00799 SPRING/BOLT	FINISHED MISC VEH	Manufactured	EA	6.000000
1	85051D	0 41273P	UNISTRUT PLASTIC END CAP P4240	FINISHED MISC VEH	Manufactured	EA	1.000000
1	85051D	0 41381P	EXHAUST INSULATING WRAP 50MM	FINISHED MISC VEH	Manufactured	EA	1.000000
1	85051D	0 41541P	LOCK LUGGAGE COMP 602 0405	FINISHED MISC VEH	Manufactured	EA	1.000000
1	85051D	0 41542P	CONNECTING RODS 600 0488	FINISHED MISC VEH	Manufactured	EA	4.000000
1	85051D	0 41543P	LOCK STRIKER 600 0487	FINISHED MISC VEH	Manufactured	EA	2.000000
1	85051D	0 41544P	LOCK ANTIBURST L/H 600 0485	FINISHED MISC VEH	Manufactured	EA	1.000000
1	85051D	0 41545P	LOCK ANTIBURST R/H 600 0486	FINISHED MISC VEH	Manufactured	EA	1.000000
1	85051D	0 41605P	STRAP WEB 420X25 100 VEL ENDS	FINISHED MISC VEH	Manufactured	EA	1.000000
1	85051D	0 41613P	STRAP WEB 640X50 100 VEL ENDS	FINISHED MISC VEH	Manufactured	EA	2.000000
1	85051D	0 41828P	PROFILE VELCRO STRAP MTG PLATE	FINISHED MISC VEH	Manufactured	EA	2.000000
1	85051D	0 41832P	PROFILE VELCRO PLATE SHORT	FINISHED MISC VEH	Manufactured	EA	17.000000
1	85051D	0 42360P	STAIR CAP 1200 X 40 X 10 Y	FINISHED MISC VEH	Manufactured	EA	4.000000
1	85051D	0 42371P	CATCH LEVER LATCH C2-32-25 KEY	FINISHED MISC VEH	Manufactured	EA	2.000000
1	85051D	0 42462P	CATCH LEVER LATCH C5-11-25	FINISHED MISC VEH	Manufactured	EA	4.000000
1	85051D	0 42477P	STRAP WEB 700/560 X 40 D 1 END	FINISHED MISC VEH	Manufactured	EA	7.000000
1	85051D	0 42478P	STRAP WEB 700/1000X 40 D 1 END	FINISHED MISC VEH	Manufactured	EA	3.000000
1	85051D	0 42513P	STRAP WEB 400/450 X 40 D 1 END	FINISHED MISC VEH	Manufactured	EA	4.000000
1	85051D	0 42539P	FITTING 1/4"-6MM PF 36750613	FINISHED MISC VEH	Manufactured	EA	1.000000
1	85051D	0 42828P	BA CLIP SPRING NYLON COATED	FINISHED MISC VEH	Manufactured	EA	4.000000
1	85051D	0 43061P	GAS STRUT 1050N 590 LONG	FINISHED MISC VEH	Manufactured	EA	2.000000
1	85051D	0 43187P	UNISTRUT CHANNEL P4000 AL 41MM	FINISHED MISC VEH	Manufactured	EA	6.000000
1	85051D	0 43312P	HINGE S/S BUTT FP 100MM	FINISHED MISC VEH	Manufactured	EA	2.000000
1	85051D	0 43394P	CONTROL BOARD PNEU PC-32213	FINISHED MISC VEH	Manufactured	EA	1.000000
1	85051D	0 43892P	HANDLE LENLOCK 25MM 300MM GRAB	FINISHED MISC VEH	Manufactured	EA	2.000000
1	85051D	0 43900P	DOOR/R AS FIRE BKT PROFILE	FINISHED MISC VEH	Manufactured	EA	2.000000
1	85051D	0 44107P	PROFILE BRK SP FIXED TC 700L	FINISHED MISC VEH	Manufactured	EA	4.000000
1	85051D	0 44138P	PROFILE BRK SP FIXED 450LONG	FINISHED MISC VEH	Manufactured	EA	2.000000
1	85051D	0 44203P	DECAL FIRST AID 60MM X 60MM	FINISHED MISC VEH	Manufactured	EA	1.000000
1	85051D	0 44225P	FABRIC 1883 330MM WIDE WHITE	FINISHED MISC VEH	Manufactured	EA	1.800000
1	85051D	0 44255P	UNISTRUT CLOSURE STRIP P1184	FINISHED MISC VEH	Manufactured	EA	5.000000
1	85051D	0 44263P	TOOL CLIP CMI	FINISHED MISC VEH	Manufactured	EA	15.000000
1	85051D	0 44264P	SPRING RETAINER CLIP CMI	FINISHED MISC VEH	Manufactured	EA	1.000000
1	85051D	0 44268P	SPRING DD-6244-CMI	FINISHED MISC VEH	Manufactured	EA	1.000000
1	85051D	0 44275P	ANGLE RIGHT FITTING C01470628	FINISHED MISC VEH	Manufactured	EA	3.000000
1	85051D	0 44353P	DOOR/R AS CENTURY 1800W X 1180	FINISHED MISC VEH	Manufactured	EA	2.000000
1	85051D	0 44354P	COMPRESSOR AFD UTE PAK 2.5HP	FINISHED MISC VEH	Manufactured	EA	1.000000
1	85051D	0 44364P	EXHAUST 2" 900 X 300 1 BEND	FINISHED MISC VEH	Manufactured	EA	1.000000
1	85051D	0 44365P	HOSE JOINER REDUCER GRS8-4	FINISHED MISC VEH	Manufactured	EA	2.000000
1	85051D	0 44371P	HINGE S/S LONG SHORT FLAPS	FINISHED MISC VEH	Manufactured	EA	2.000000
1	85051D	0 44539P	KEY SPARE 602-0620 FIT6020405	FINISHED MISC VEH	Manufactured	EA	2.000000
1	85051D	0 45002P	CARPET FRONT RUNNER	FINISHED MISC VEH	Manufactured	EA	1.000000
1	85051D	0 45066P	DEC LOCKERS	FINISHED MISC VEH	Manufactured	EA	1.000000
1	85051D	0 45131P	LAB DO NOT STEP BACKWARDS CAB	FINISHED MISC VEH	Manufactured	EA	2.000000
1	85051D	0 45135P	LAB FIRST AID	FINISHED MISC VEH	Manufactured	EA	1.000000
1	85051D	0 45137P	LAB HAZCHEM SCALE	FINISHED MISC VEH	Manufactured	EA	1.000000
1	85051D	0 45384P	WIRE ROPE S/S 2.4MM ASO247194	FINISHED MISC VEH	Manufactured	EA	12.000000
1	85051D	0 45386P	WIRE ROPE FERRULE 2.5MM DFC025	FINISHED MISC VEH	Manufactured	EA	14.000000
1	85051D	0 45427P	DEC FRESH WATER 150 X 80	FINISHED MISC VEH	Manufactured	EA	1.000000
1	85051D	0 45543P	DEC ENGINE HOURS	FINISHED MISC VEH	Manufactured	EA	1.000000
1	85051D	0 45570P	DEC MANUFACTURE PLATE SEM	FINISHED MISC VEH	Manufactured	EA	1.000000
1	85051D	0 45590P	DEC ANNODISED DIESEL/24V SET	FINISHED MISC VEH	Manufactured	EA	1.000000
1	85051D	0 45702P	LAB LOOK UP AND LIVE	FINISHED MISC VEH	Manufactured	EA	1.000000
1	85051D	0 45807P	STRIPPING DAYBRIGHT VC312 25MM	FINISHED MISC VEH	Manufactured	EA	16.000000

85051D SES RESCUE ALL TERRAIN 6X6

1	85051D	0 45894P	LAB COMPRESSED AIR OUTLET	FINISHED MISC VEH	Manufactured	EA	4.000000
1	85051D	0 45896P	LAB SEM FIRE & RESCUE LENSECAP	FINISHED MISC VEH	Manufactured	EA	3.000000
1	85051D	0 45968P	PLASAPANEL 2440X1220X12.7 WHITE	FINISHED MISC VEH	Manufactured	EA	5.760000
1	85051D	0 45979P	LAB 240V WARNING LABEL	FINISHED MISC VEH	Manufactured	EA	10.000000
1	85051D	0 45981P	DEC LIGHT MAST CONTROL SES 07	FINISHED MISC VEH	Manufactured	EA	1.000000
1	85051D	0 46024P	LAB LOCKER 1 TO 7 / 2 X 3 SET	FINISHED MISC VEH	Manufactured	EA	1.000000
1	85051D	0 46025P	DEC SET RESCUE SES 6X6 SET	FINISHED MISC VEH	Manufactured	EA	1.000000
1	85051D	0 46026P	CARGO BARRIER CABIN SES 6 X 6	FINISHED MISC VEH	Manufactured	EA	1.000000
1	85051D	0 46029P	DEC IGNITION	FINISHED MISC VEH	Manufactured	EA	1.000000
1	85051D	0 46042P	LAB NO ITEMS ON DASHBOARD	FINISHED MISC VEH	Manufactured	EA	1.000000
1	85051D	0 48937P	HINGE PIANO S/S 50MM X 1050LON	FINISHED MISC VEH	Manufactured	EA	2.000000
1	85051D	0 49852P	GENERATOR EXHAUST SES 6 X 6	FINISHED MISC VEH	Manufactured	EA	1.000000
1	85051D	0 56235M	BKT STRIKER REAR F/G DOOR	FINISHED MISC VEH	Manufactured	EA	1.000000
2	56235M	0 20115P	S/S SHEET 3MM GRADE 304	STEEL & ALUMINIUM	Purchased	M2	0.020000
2	56235M	0 20786P	S/S RHS 25 X 25 X 3 304	STEEL & ALUMINIUM	Purchased	MT	0.300000
2	56235M	0 20801P	S/S FLAT 12 X 3 316 GRADE	STEEL & ALUMINIUM	Purchased	MT	0.048000
1	85051D	0 56240M	STOWAGE BOARD & TRAY HANDLE	FINISHED MISC VEH	Manufactured	EA	1.000000
2	56240M	0 20103P	S/S ROD 12MM	STEEL & ALUMINIUM	Purchased	MT	1.500000
2	56240M	0 44098P	PROFILE SLIDE OUT TRAY HANDLE	PROFILES	Purchased	EA	1.000000
2	56240M	0 78116P	POWDERCOAT	POWDERCOAT	Purchased	EA	10.000000
1	85051D	0 56241M	TRAY RELEASE ROD 800MM LONG	FINISHED MISC VEH	Manufactured	EA	3.000000
2	56241M	0 20103P	S/S ROD 12MM	STEEL & ALUMINIUM	Purchased	MT	0.801000
2	56241M	0 44100P	PROFILE TRAY RELEASE HANDLE	PROFILES	Purchased	EA	1.000000
2	56241M	0 78116P	POWDERCOAT	POWDERCOAT	Purchased	EA	10.000000
1	85051D	0 56242M	TRAY RELEASE ROD 1200MM LONG	FINISHED MISC VEH	Manufactured	EA	3.000000
2	56242M	0 20103P	S/S ROD 12MM	STEEL & ALUMINIUM	Purchased	MT	1.201000
2	56242M	0 44100P	PROFILE TRAY RELEASE HANDLE	PROFILES	Purchased	EA	1.000000
2	56242M	0 78116P	POWDERCOAT	POWDERCOAT	Purchased	EA	10.000000
1	85051D	0 56243M	STORAGE BOARD LOCKING PLATE	FINISHED MISC VEH	Manufactured	EA	1.000000
2	56243M	0 41654P	STEP ROLLOUT BEARING BOSS NSW	HARDWARE	Purchased	EA	1.000000
2	56243M	0 44099P	PROFILE SLIDE OUT TRAY L/PLAT	PROFILES	Purchased	EA	1.000000
1	85051D	0 56518M	BKT MTG BODY SES VIC T2 2007	FINISHED MISC VEH	Manufactured	EA	2.000000
2	56518M	0 20295P	STEEL PLATE 6MM	STEEL & ALUMINIUM	Purchased	M2	0.015000
2	56518M	0 78128P	PACIFATING	PASSIVATE	Purchased	EA	2.000000
1	85051D	0 56527M	ROLLOUT TRAYS LOWER SES VIC T2	FINISHED MISC VEH	Manufactured	EA	1.000000
2	56527M	0 14075P	PNT THINNERS AAA XGPT20	PAINT	Purchased	LT	0.200000
2	56527M	0 14257P	GLASURIT 283-1880 CT ETCH PRI	PAINT	Purchased	LT	0.040000
2	56527M	0 14258P	GLASURIT 352-235 ETCH ADD SOL	PAINT	Purchased	LT	0.040000
2	56527M	0 14262P	GLASURIT 360-4 METAL CLEANER	PAINT	Purchased	LT	0.080000
2	56527M	0 14320P	SL 1000 BLACK 1 GAL KIT	PAINT	Purchased	EA	0.450000
2	56527M	0 14321P	SL PRIMER 450 2 GAL KIT	PAINT	Purchased	EA	0.100000
2	56527M	0 20052P	ALUM PLATE 3MM 5005	STEEL & ALUMINIUM	Purchased	M2	1.500000
1	85051D	0 56549M	CABLE RELEASE PLATE PULL TRAY	FINISHED MISC VEH	Manufactured	EA	3.000000
2	56549M	0 41654P	STEP ROLLOUT BEARING BOSS NSW	HARDWARE	Purchased	EA	1.000000
2	56549M	0 44101P	PROFILE TRAY CABLE RELEASE PL	PROFILES	Purchased	EA	1.000000
1	85051D	0 56553M	BODY PANEL ELECTRICAL SES T2	FINISHED MISC VEH	Manufactured	EA	1.000000
2	56553M	0 20050P	ALUM PLATE 2.5MM	STEEL & ALUMINIUM	Purchased	M2	0.061500
1	85051D	0 56566M	SES ALL TERRAIN 6X6 RESCUE	FINISHED MISC VEH	Manufactured	EA	1.000000
2	56566M	0 20026P	ALUM FLAT 32 X 6	STEEL & ALUMINIUM	Purchased	MT	2.165000
2	56566M	0 20574P	ALUM ANGLE 76.2 X 50.8 X 6.4	STEEL & ALUMINIUM	Purchased	MT	1.470000
2	56566M	0 40539P	NYLON CADCO 32 X 5 X 1MT LONG	HARDWARE	Purchased	EA	3.000000
1	85051D	0 56573M	BKT LITTLE GIANT LADDER SES T2	FINISHED MISC VEH	Manufactured	EA	2.000000
2	56573M	0 20574P	ALUM ANGLE 76.2 X 50.8 X 6.4	STEEL & ALUMINIUM	Purchased	MT	0.100000
1	85051D	0 56574M	BKT AIR OUTLET REAR VIC SES T2	FINISHED MISC VEH	Manufactured	EA	2.000000
2	56574M	0 20574P	ALUM ANGLE 76.2 X 50.8 X 6.4	STEEL & ALUMINIUM	Purchased	MT	0.070000
1	85051D	0 56577M	BKT WITCHES HAT STOWAGE SES T2	FINISHED MISC VEH	Manufactured	EA	1.000000
2	56577M	0 20584P	ALUM ANGLE 50 X 50 X 3	STEEL & ALUMINIUM	Purchased	MT	0.865000
1	85051D	0 56579M	MAIN FUSE MTG PLATE VIC SES T2	FINISHED MISC VEH	Manufactured	EA	1.000000
2	56579M	0 20052P	ALUM PLATE 3MM 5005	STEEL & ALUMINIUM	Purchased	M2	0.016900
1	85051D	0 56603M	COVER 240V REAR VIC SES T2	FINISHED MISC VEH	Manufactured	EA	1.000000
2	56603M	0 20022P	ALUM FLAT 25 X 3	STEEL & ALUMINIUM	Purchased	MT	0.025000

85051D SES RESCUE ALL TERRAIN 6X6

2	56603M	0 20050P	ALUM PLATE 2.5MM	STEEL & ALUMINIUM	Purchased	M2	0.109800
1	85051D	0 56604M	BKT MTG 240V CABLE VIC SES T2	FINISHED MISC VEH	Manufactured	EA	1.000000
2	56604M	0 20004P	ALUM ANGLE 32 X 32 X 3	STEEL & ALUMINIUM	Purchased	MT	0.300000
1	85051D	0 56606M	WALL BOARD MTG CHANNEL SES T2	FINISHED MISC VEH	Manufactured	EA	40.000000
2	56606M	0 20015P	ALUM CHANNEL 25 X 25 X 3	STEEL & ALUMINIUM	Purchased	MT	0.070000
1	85051D	0 56609M	BKT DOOR LOCK VIC SES T2 2007	FINISHED MISC VEH	Manufactured	EA	1.000000
2	56609M	0 20030P	ALUM FLAT 50 X 6	STEEL & ALUMINIUM	Purchased	MT	0.170000
1	85051D	0 56612M	BKT LIGHT VIC SES T2 2007	FINISHED MISC VEH	Manufactured	EA	2.000000
2	56612M	0 20050P	ALUM PLATE 2.5MM	STEEL & ALUMINIUM	Purchased	M2	0.007800
1	85051D	0 56837M	TANK WATER SES 6X6 ALL TERRAIN	FINISHED MISC VEH	Manufactured	EA	1.000000
2	56837M	0 14075P	PNT THINNERS AAA XGPT20	PAINT	Purchased	LT	0.500000
2	56837M	0 14256P	GLASURIT 284-25 CV FILLER BEI	PAINT	Purchased	LT	0.050000
2	56837M	0 14257P	GLASURIT 283-1880 CT ETCH PRI	PAINT	Purchased	LT	0.130000
2	56837M	0 14258P	GLASURIT 352-235 ETCH ADD SOL	PAINT	Purchased	LT	0.185000
2	56837M	0 14260P	GLASURIT 922-16 CT HARDENER	PAINT	Purchased	LT	0.013000
2	56837M	0 14261P	GLASURIT 922-18 CT HARDENER	PAINT	Purchased	LT	0.058000
2	56837M	0 14262P	GLASURIT 360-4 METAL CLEANER	PAINT	Purchased	LT	0.085000
2	56837M	0 14263P	GLASURIT 352-216 REDUCER SLOW	PAINT	Purchased	LT	0.173000
2	56837M	0 14274P	GLASURIT 929-51 HS FILLER HARD	PAINT	Purchased	LT	0.005000
2	56837M	0 14290P	GLASURIT 285-85 MS PRIMER FILL	PAINT	Purchased	LT	0.020000
2	56837M	0 14297P	GLASURIT REDUCER 352-91	PAINT	Purchased	LT	0.048000
2	56837M	0 14316P	GLASURIT TOYOTA WHITE 058 68LI	PAINT	Purchased	LT	0.230000
2	56837M	0 20007P	ALUM ANGLE 40 X 40 X 6	STEEL & ALUMINIUM	Purchased	MT	0.120000
2	56837M	0 20050P	ALUM PLATE 2.5MM	STEEL & ALUMINIUM	Purchased	M2	1.200000
1	85051D	0 56975M	BODY MOD SES 6X6 FRAME ASSY	FINISHED MISC VEH	Manufactured	EA	1.000000
2	56975M	0 14075P	PNT THINNERS AAA XGPT20	PAINT	Purchased	LT	6.000000
2	56975M	0 14185P	PNT SPARTAN WAX & GREASE REM	PAINT	Purchased	LT	3.000000
2	56975M	0 14256P	GLASURIT 284-25 CV FILLER BEI	PAINT	Purchased	LT	0.800000
2	56975M	0 14257P	GLASURIT 283-1880 CT ETCH PRI	PAINT	Purchased	LT	1.850000
2	56975M	0 14258P	GLASURIT 352-235 ETCH ADD SOL	PAINT	Purchased	LT	2.400000
2	56975M	0 14260P	GLASURIT 922-16 CT HARDENER	PAINT	Purchased	LT	0.400000
2	56975M	0 14261P	GLASURIT 922-18 CT HARDENER	PAINT	Purchased	LT	0.900000
2	56975M	0 14262P	GLASURIT 360-4 METAL CLEANER	PAINT	Purchased	LT	1.500000
2	56975M	0 14263P	GLASURIT 352-216 REDUCER SLOW	PAINT	Purchased	LT	1.500000
2	56975M	0 14293P	ANTISTATIC DEGREASER 700-1	PAINT	Purchased	LT	2.000000
2	56975M	0 14296P	GLASURIT GAF4223 HANCOCK GREEN	PAINT	Purchased	LT	1.100000
2	56975M	0 14297P	GLASURIT REDUCER 352-91	PAINT	Purchased	LT	1.200000
2	56975M	0 14316P	GLASURIT TOYOTA WHITE 058 68LI	PAINT	Purchased	LT	2.800000
2	56975M	0 19907P	MALUM-EXT 3943 40X 40 X 3SLOT	STEEL & ALUMINIUM	Purchased	MT	17.295000
2	56975M	0 19908P	MALUM-EXT 3941 40X 80 X 6SLOT	STEEL & ALUMINIUM	Purchased	MT	30.625000
2	56975M	0 19943P	CONNECTOR STD 6786 40 X 40	FASTENERS	Purchased	EA	100.000000
2	56975M	0 19944P	CONNECTOR 6787 90D 40 X 40	FASTENERS	Purchased	EA	100.000000
2	56975M	0 19945P	CONNECTOR UNI 4386 40 X 40	FASTENERS	Purchased	EA	100.000000
2	56975M	0 19967P	ALUM EXT 40X40X 4SLOT	STEEL & ALUMINIUM	Purchased	MT	20.168000
2	56975M	0 20052P	ALUM PLATE 3MM 5005	STEEL & ALUMINIUM	Purchased	M2	5.760000
2	56975M	0 20371P	ALUM COPING MOULD MSE3388N	STEEL & ALUMINIUM	Purchased	MT	11.000000
2	56975M	0 20853P	DIBOND SHEET 3MM 3050X2050	STEEL & ALUMINIUM	Purchased	EA	2.000000
2	56975M	0 35290P	NUT EYE M20	FASTENERS	Purchased	EA	4.000000
2	56975M	0 36150P	BOLT HEX H/T Z/P M20 x 40	FASTENERS	Purchased	EA	4.000000
2	56975M	0 44441P	LOCTITE SPEEDBONDER PARTS A/B	HARDWARE	Purchased	EA	4.000000
2	56975M	0 44443P	LOCTITE NOZZLES 10 PACK	HARDWARE	Purchased	EA	2.000000
2	56975M	0 44444P	LOCTITE 7070 OCD FREE CLEANER/	HARDWARE	Purchased	EA	2.000000
2	56975M	0 54605M	BKT BODY LIFTING EYEBOLT	FABRICATED	Manufactured	EA	4.000000
3	54605M	0 43908P	PROF BODY LIFTING EYEBOLT BKT	PROFILES	Purchased	EA	1.000000
3	54605M	0 78128P	PACIFATING	PASSIVATE	Purchased	EA	3.500000
1	85051D	0 56976M	SUB FRAME SES ALL TERRAIN ASSY	FINISHED MISC VEH	Manufactured	EA	1.000000
2	56976M	0 20007P	ALUM ANGLE 40 X 40 X 6	STEEL & ALUMINIUM	Purchased	MT	0.710000
2	56976M	0 20018P	ALUM CHANNEL 80 X 40 X 4	STEEL & ALUMINIUM	Purchased	MT	6.500000
2	56976M	0 20141P	STEEL ANGLE 50 X 50 X 6	STEEL & ALUMINIUM	Purchased	MT	0.460000
2	56976M	0 20574P	ALUM ANGLE 76.2 X 50.8 X 6.4	STEEL & ALUMINIUM	Purchased	MT	0.710000
2	56976M	0 43186P	NYLON WHITE 75 X 10 X 3000MM	HARDWARE	Purchased	EA	6.000000

85051D SES RESCUE ALL TERRAIN 6X6

2	56976M	0 57599M	SUB FRAME SES ALL TERRAIN	FABRICATED	Manufactured	EA	1.000000
3	57599M	0 20141P	STEEL ANGLE 50 X 50 X 6	STEEL & ALUMINIUM	Purchased	MT	4.500000
3	57599M	0 20292P	STEEL PLATE 3MM	STEEL & ALUMINIUM	Purchased	M2	0.016000
3	57599M	0 20366P	STEEL RHS 75 X 75 X 3.0 DU/GAL	STEEL & ALUMINIUM	Purchased	MT	6.500000
3	57599M	0 20630P	STEEL RHS 50 X 50 X 3 GAL	STEEL & ALUMINIUM	Purchased	MT	13.500000
1	85051D	0 56977M	FLOODLIGHT BOX SES ALL TERRAIN	FINISHED MISC VEH	Manufactured	EA	1.000000
2	56977M	0 14075P	PNT THINNERS AAA XGPT20	PAINT	Purchased	LT	0.400000
2	56977M	0 14185P	PNT SPARTAN WAX & GREASE REM	PAINT	Purchased	LT	0.200000
2	56977M	0 14257P	GLASURIT 283-1880 CT ETCH PRI	PAINT	Purchased	LT	0.092300
2	56977M	0 14258P	GLASURIT 352-235 ETCH ADD SOL	PAINT	Purchased	LT	0.012620
2	56977M	0 14261P	GLASURIT 922-18 CT HARDENER	PAINT	Purchased	LT	0.090000
2	56977M	0 14262P	GLASURIT 360-4 METAL CLEANER	PAINT	Purchased	LT	0.053900
2	56977M	0 14263P	GLASURIT 352-216 REDUCER SLOW	PAINT	Purchased	LT	0.048500
2	56977M	0 14290P	GLASURIT 285-85 MS PRIMER FILL	PAINT	Purchased	LT	0.012300
2	56977M	0 14291P	GLASURIT 801-703 EPOXY PRIMER	PAINT	Purchased	LT	0.003100
2	56977M	0 14297P	GLASURIT REDUCER 352-91	PAINT	Purchased	LT	0.006200
2	56977M	0 14316P	GLASURIT TOYOTA WHITE 058 68LI	PAINT	Purchased	LT	0.310000
2	56977M	0 20036P	ALUM PIPE 20 OD X 1.6 WALL	STEEL & ALUMINIUM	Purchased	MT	0.550000
2	56977M	0 20050P	ALUM PLATE 2.5MM	STEEL & ALUMINIUM	Purchased	M2	2.846200
1	85051D	0 56978M	BUMPER REAR SES ALL TERRAIN	FINISHED MISC VEH	Manufactured	EA	1.000000
2	56978M	0 14256P	GLASURIT 284-25 CV FILLER BEI	PAINT	Purchased	LT	0.300000
2	56978M	0 14257P	GLASURIT 283-1880 CT ETCH PRI	PAINT	Purchased	LT	0.180000
2	56978M	0 14258P	GLASURIT 352-235 ETCH ADD SOL	PAINT	Purchased	LT	0.195000
2	56978M	0 14260P	GLASURIT 922-16 CT HARDENER	PAINT	Purchased	LT	0.138000
2	56978M	0 14261P	GLASURIT 922-18 CT HARDENER	PAINT	Purchased	LT	0.068000
2	56978M	0 14262P	GLASURIT 360-4 METAL CLEANER	PAINT	Purchased	LT	0.150000
2	56978M	0 14263P	GLASURIT 352-216 REDUCER SLOW	PAINT	Purchased	LT	0.103000
2	56978M	0 14274P	GLASURIT 929-51 HS FILLER HARD	PAINT	Purchased	LT	0.130000
2	56978M	0 14290P	GLASURIT 285-85 MS PRIMER FILL	PAINT	Purchased	LT	0.020000
2	56978M	0 14297P	GLASURIT REDUCER 352-91	PAINT	Purchased	LT	0.048000
2	56978M	0 14316P	GLASURIT TOYOTA WHITE 058 68LI	PAINT	Purchased	LT	0.270000
2	56978M	0 20060P	ALUM PLATE 5MM	STEEL & ALUMINIUM	Purchased	M2	1.000000
1	85051D	0 56979M	LOCKER REAR SES ALL TERRAIN	FINISHED MISC VEH	Manufactured	EA	1.000000
2	56979M	0 20064P	ALUM PLATE CHEQUER 5MM	STEEL & ALUMINIUM	Purchased	M2	0.400000
2	56979M	0 20428P	ALUM PLATE CHEQUER 2.5MM H/N	STEEL & ALUMINIUM	Purchased	M2	5.760000
1	85051D	0 56980M	WHEEL ARCH LOCKER L/SIDE SES	FINISHED MISC VEH	Manufactured	EA	1.000000
2	56980M	0 20064P	ALUM PLATE CHEQUER 5MM	STEEL & ALUMINIUM	Purchased	M2	0.350000
2	56980M	0 20428P	ALUM PLATE CHEQUER 2.5MM H/N	STEEL & ALUMINIUM	Purchased	M2	1.150000
1	85051D	0 56981M	WHEEL ARCH LOCKER R/SIDE SES	FINISHED MISC VEH	Manufactured	EA	1.000000
2	56981M	0 20064P	ALUM PLATE CHEQUER 5MM	STEEL & ALUMINIUM	Purchased	M2	0.350000
2	56981M	0 20428P	ALUM PLATE CHEQUER 2.5MM H/N	STEEL & ALUMINIUM	Purchased	M2	1.150000
1	85051D	0 56982M	DOOR FRAME ASSY REAR BODY MODS	FINISHED MISC VEH	Manufactured	EA	1.000000
2	56982M	0 14075P	PNT THINNERS AAA XGPT20	PAINT	Purchased	LT	1.000000
2	56982M	0 14185P	PNT SPARTAN WAX & GREASE REM	PAINT	Purchased	LT	0.500000
2	56982M	0 14257P	GLASURIT 283-1880 CT ETCH PRI	PAINT	Purchased	LT	0.100000
2	56982M	0 14258P	GLASURIT 352-235 ETCH ADD SOL	PAINT	Purchased	LT	0.140000
2	56982M	0 14261P	GLASURIT 922-18 CT HARDENER	PAINT	Purchased	LT	0.080000
2	56982M	0 14262P	GLASURIT 360-4 METAL CLEANER	PAINT	Purchased	LT	0.160000
2	56982M	0 14263P	GLASURIT 352-216 REDUCER SLOW	PAINT	Purchased	LT	0.240000
2	56982M	0 14293P	ANTISTATIC DEGREASER 700-1	PAINT	Purchased	LT	0.250000
2	56982M	0 14316P	GLASURIT TOYOTA WHITE 058 68LI	PAINT	Purchased	LT	0.320000
2	56982M	0 19945P	CONNECTOR UNI 4386 40 X 40	FASTENERS	Purchased	EA	25.000000
2	56982M	0 19967P	ALUM EXT 40X40X 4SLOT	STEEL & ALUMINIUM	Purchased	MT	10.500000
2	56982M	0 20007P	ALUM ANGLE 40 X 40 X 6	STEEL & ALUMINIUM	Purchased	MT	1.445000
2	56982M	0 20053P	ALUM PLATE 4MM H5005	STEEL & ALUMINIUM	Purchased	M2	0.130000
2	56982M	0 20853P	DIBOND SHEET 3MM 3050X2050	STEEL & ALUMINIUM	Purchased	EA	4.000000
2	56982M	0 44302P	ADH SIKAFLEX 295UV 600ML WHITE	CONSUMABLES	Purchased	EA	1.000000
1	85051D	0 56983M	FLOOR PLATES REAR ALL TERRAIN	FINISHED MISC VEH	Manufactured	EA	1.000000
2	56983M	0 20063P	ALUM PLATE CHEQUER 3MM H/N	STEEL & ALUMINIUM	Purchased	M2	2.880000
1	85051D	0 56984M	FLOOR PLATES FRONT ALL TERRAIN	FINISHED MISC VEH	Manufactured	EA	2.000000
2	56984M	0 20063P	ALUM PLATE CHEQUER 3MM H/N	STEEL & ALUMINIUM	Purchased	M2	1.566000

85051D SES RESCUE ALL TERRAIN 6X6

1	85051D	0 56985M	WHEEL SPARE WELL SES	FINISHED MISC VEH	Manufactured	EA	1.000000
2	56985M	0 20063P	ALUM PLATE CHEQUER 3MM H/N	STEEL & ALUMINIUM	Purchased	M2	0.550000
1	85051D	0 56986M	DOOR TRIM SET SES ALL TERRAIN	FINISHED MISC VEH	Manufactured	EA	1.000000
2	56986M	0 20566P	S/S SHEET 1.2MM 304 BA POLISH	STEEL & ALUMINIUM	Purchased	M2	1.500000
1	85051D	0 56987M	BATTERY TRAY SES ALL TERRAIN	FINISHED MISC VEH	Manufactured	EA	1.000000
2	56987M	0 20052P	ALUM PLATE 3MM 5005	STEEL & ALUMINIUM	Purchased	M2	0.085800
2	56987M	0 20066P	ALUM RHS 25 X 25 X 3	STEEL & ALUMINIUM	Purchased	MT	0.150000
2	56987M	0 20362P	ALUM RHS 20 X 20 X 3	STEEL & ALUMINIUM	Purchased	MT	0.150000
2	56987M	0 78116P	POWDERCOAT	POWDERCOAT	Purchased	EA	10.000000
1	85051D	0 56988M	BODY MTG ANGLES LONG SES	FINISHED MISC VEH	Manufactured	EA	4.000000
2	56988M	0 20007P	ALUM ANGLE 40 X 40 X 6	STEEL & ALUMINIUM	Purchased	MT	0.200000
1	85051D	0 56989M	BODY MTG ANGLES SHORT SES	FINISHED MISC VEH	Manufactured	EA	2.000000
2	56989M	0 20007P	ALUM ANGLE 40 X 40 X 6	STEEL & ALUMINIUM	Purchased	MT	0.160000
1	85051D	0 56990M	BKT BATT SUPPORT SET SES	FINISHED MISC VEH	Manufactured	EA	1.000000
2	56990M	0 20207P	STEEL FMS 40 X 3	STEEL & ALUMINIUM	Purchased	MT	0.635000
2	56990M	0 20217P	STEEL FMS 50 X 3	STEEL & ALUMINIUM	Purchased	MT	0.165000
2	56990M	0 78116P	POWDERCOAT	POWDERCOAT	Purchased	EA	10.000000
1	85051D	0 56991M	LIGHTMAST GUARD DOOR SES 6 X 6	FINISHED MISC VEH	Manufactured	EA	1.000000
2	56991M	0 14075P	PNT THINNERS AAA XGPT20	PAINT	Purchased	LT	0.500000
2	56991M	0 14185P	PNT SPARTAN WAX & GREASE REM	PAINT	Purchased	LT	0.200000
2	56991M	0 14261P	GLASURIT 922-18 CT HARDENER	PAINT	Purchased	LT	0.080000
2	56991M	0 14262P	GLASURIT 360-4 METAL CLEANER	PAINT	Purchased	LT	0.370000
2	56991M	0 14263P	GLASURIT 352-216 REDUCER SLOW	PAINT	Purchased	LT	0.240000
2	56991M	0 14279P	GLASURIT GAF2924 HINO WHITE	PAINT	Purchased	LT	0.120000
2	56991M	0 14291P	GLASURIT 801-703 EPOXY PRIMER	PAINT	Purchased	LT	0.240000
2	56991M	0 14292P	GLASURIT 965-53 CV HARDENER	PAINT	Purchased	LT	0.600000
2	56991M	0 20050P	ALUM PLATE 2.5MM	STEEL & ALUMINIUM	Purchased	M2	0.600000
2	56991M	0 40428P	HINGE PIANO S/S 38MM X 18X1.8	HARDWARE	Purchased	EA	1.000000
1	85051D	0 56992M	LIGHTMAST GUARD SES 6X6 SES	FINISHED MISC VEH	Manufactured	EA	1.000000
2	56992M	0 14075P	PNT THINNERS AAA XGPT20	PAINT	Purchased	LT	1.000000
2	56992M	0 14185P	PNT SPARTAN WAX & GREASE REM	PAINT	Purchased	LT	0.400000
2	56992M	0 14261P	GLASURIT 922-18 CT HARDENER	PAINT	Purchased	LT	0.160000
2	56992M	0 14262P	GLASURIT 360-4 METAL CLEANER	PAINT	Purchased	LT	0.240000
2	56992M	0 14263P	GLASURIT 352-216 REDUCER SLOW	PAINT	Purchased	LT	0.480000
2	56992M	0 14279P	GLASURIT GAF2924 HINO WHITE	PAINT	Purchased	LT	0.640000
2	56992M	0 14291P	GLASURIT 801-703 EPOXY PRIMER	PAINT	Purchased	LT	0.480000
2	56992M	0 14292P	GLASURIT 965-53 CV HARDENER	PAINT	Purchased	LT	0.120000
2	56992M	0 14297P	GLASURIT REDUCER 352-91	PAINT	Purchased	LT	0.240000
2	56992M	0 20050P	ALUM PLATE 2.5MM	STEEL & ALUMINIUM	Purchased	M2	2.880000
1	85051D	0 56993M	BKT GENERATOR HOLD DOWN 6X6	FINISHED MISC VEH	Manufactured	EA	2.000000
2	56993M	0 20007P	ALUM ANGLE 40 X 40 X 6	STEEL & ALUMINIUM	Purchased	MT	1.090000
1	85051D	0 56994M	EXHAUST TUBE SES ALL TERRAIN	FINISHED MISC VEH	Manufactured	EA	1.000000
2	56994M	0 20052P	ALUM PLATE 3MM 5005	STEEL & ALUMINIUM	Purchased	M2	0.033800
2	56994M	0 20354P	ALUM PIPE 100 OD X 3 WALL	STEEL & ALUMINIUM	Purchased	MT	1.260000
1	85051D	0 56995M	BKT FUEL FILLER SES	FINISHED MISC VEH	Manufactured	EA	1.000000
2	56995M	0 20050P	ALUM PLATE 2.5MM	STEEL & ALUMINIUM	Purchased	M2	0.090000
2	56995M	0 78116P	POWDERCOAT	POWDERCOAT	Purchased	EA	20.000000
1	85051D	0 56996M	SHELF SES ALL TERRAIN VEHICLE	FINISHED MISC VEH	Manufactured	EA	1.000000
2	56996M	0 14075P	PNT THINNERS AAA XGPT20	PAINT	Purchased	LT	0.300000
2	56996M	0 14257P	GLASURIT 283-1880 CT ETCH PRI	PAINT	Purchased	LT	0.120000
2	56996M	0 14258P	GLASURIT 352-235 ETCH ADD SOL	PAINT	Purchased	LT	0.120000
2	56996M	0 14262P	GLASURIT 360-4 METAL CLEANER	PAINT	Purchased	LT	0.120000
2	56996M	0 14320P	SL 1000 BLACK 1 GAL KIT	PAINT	Purchased	EA	0.750000
2	56996M	0 14321P	SL PRIMER 450 2 GAL KIT	PAINT	Purchased	EA	0.015000
2	56996M	0 20052P	ALUM PLATE 3MM 5005	STEEL & ALUMINIUM	Purchased	M2	2.880000
1	85051D	0 56997M	PULLOUT TRAY REAR SES 6X6	FINISHED MISC VEH	Manufactured	EA	1.000000
2	56997M	0 14075P	PNT THINNERS AAA XGPT20	PAINT	Purchased	LT	0.250000
2	56997M	0 14257P	GLASURIT 283-1880 CT ETCH PRI	PAINT	Purchased	LT	0.050000
2	56997M	0 14258P	GLASURIT 352-235 ETCH ADD SOL	PAINT	Purchased	LT	0.050000
2	56997M	0 14262P	GLASURIT 360-4 METAL CLEANER	PAINT	Purchased	LT	0.100000
2	56997M	0 14320P	SL 1000 BLACK 1 GAL KIT	PAINT	Purchased	EA	0.600000

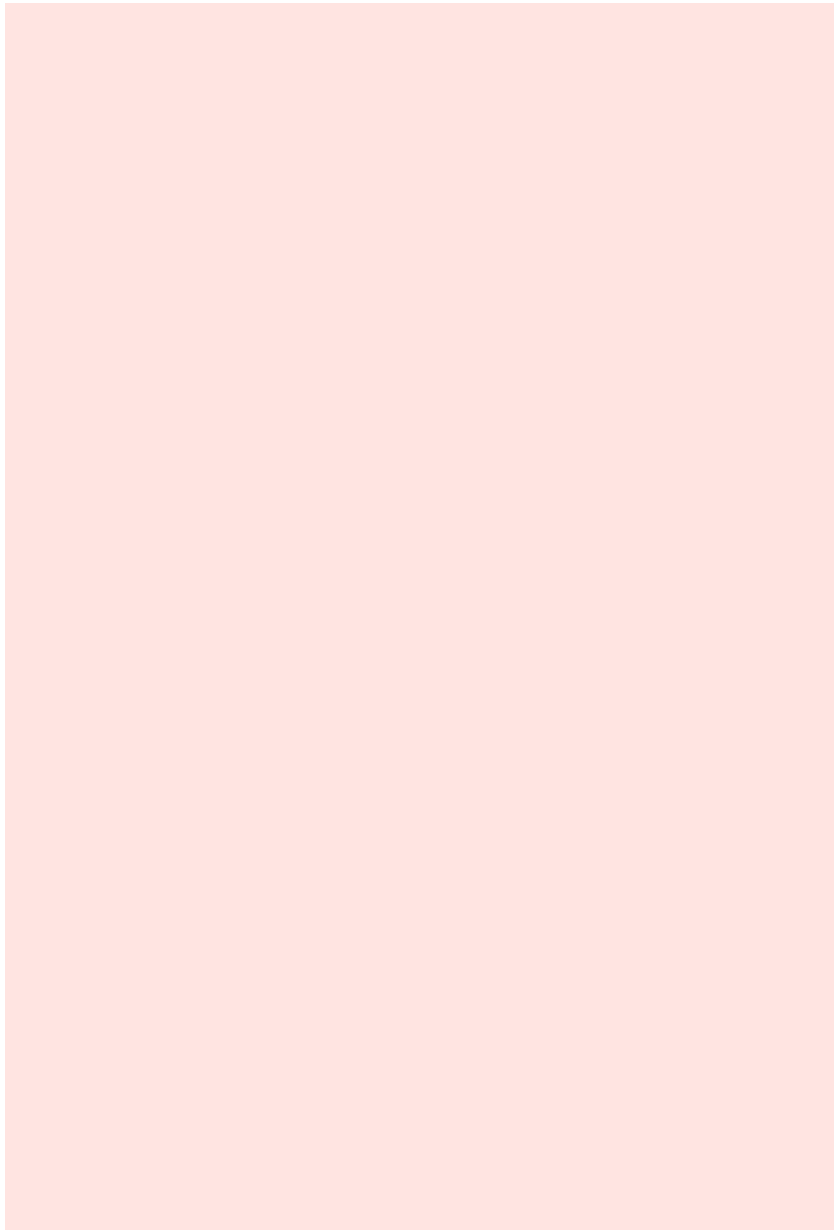
85051D SES RESCUE ALL TERRAIN 6X6

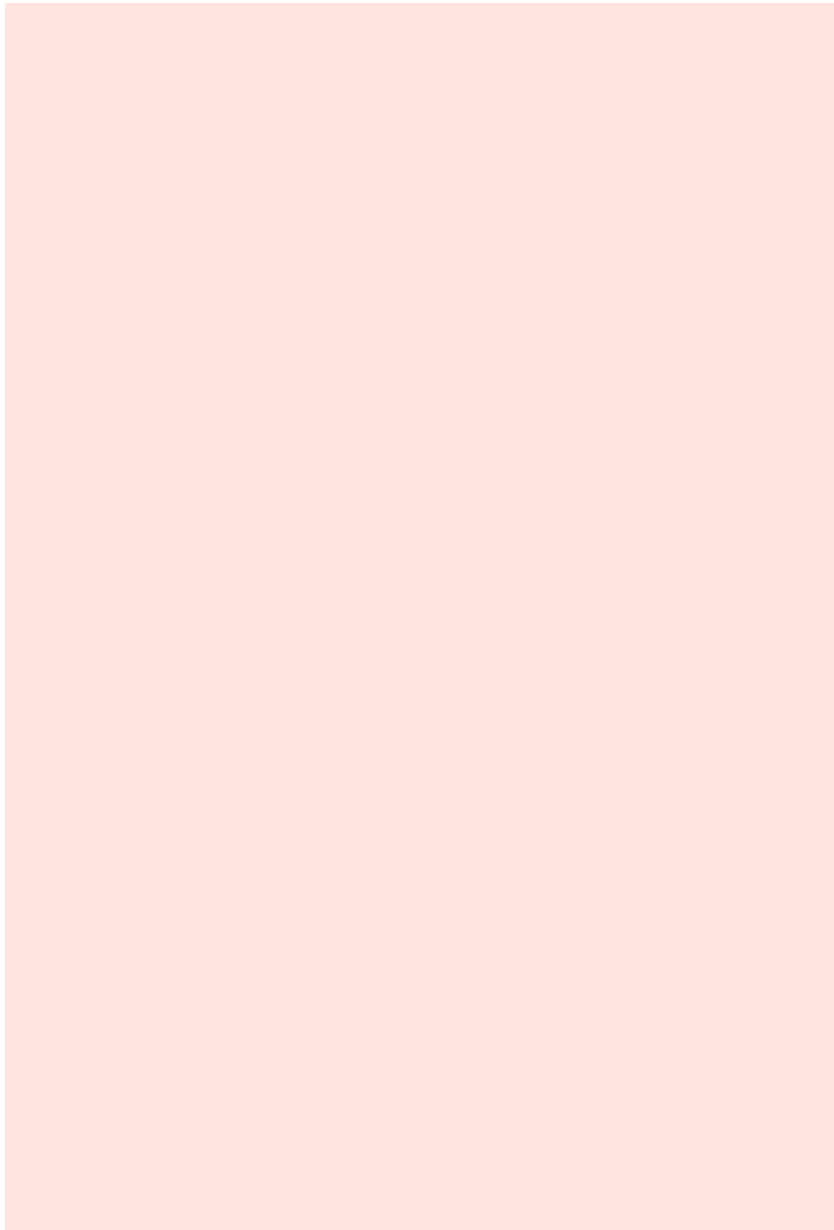
2	56997M	0 14321P	SL PRIMER 450 2 GAL KIT	PAINT	Purchased	EA	0.015000
2	56997M	0 20004P	ALUM ANGLE 32 X 32 X 3	STEEL & ALUMINIUM	Purchased	MT	0.200000
2	56997M	0 20009P	ALUM ANGLE 50 X 50 X 6	STEEL & ALUMINIUM	Purchased	MT	4.200000
2	56997M	0 20064P	ALUM PLATE CHEQUER 5MM	STEEL & ALUMINIUM	Purchased	M2	0.975000
1	85051D	0 56998M	WHEEL SPARE HOLDER SES 6X6	FINISHED MISC VEH	Manufactured	EA	1.000000
2	56998M	0 20210P	STEEL FMS 40 X 8	STEEL & ALUMINIUM	Purchased	MT	0.175000
2	56998M	0 20229P	STEEL FMS 75 X 5	STEEL & ALUMINIUM	Purchased	MT	0.075000
2	56998M	0 20326P	STEEL RMS 10MM	STEEL & ALUMINIUM	Purchased	MT	0.160000
2	56998M	0 35305P	NUT HEX Z/P M12	FASTENERS	Purchased	EA	1.000000
2	56998M	0 78116P	POWDERCOAT	POWDERCOAT	Purchased	EA	7.500000
1	85051D	0 56999M	TRAY ROLLOUT 1145MM WIDE SES	FINISHED MISC VEH	Manufactured	EA	1.000000
2	56999M	0 14075P	PNT THINNERS AAA XGPT20	PAINT	Purchased	LT	0.250000
2	56999M	0 14257P	GLASURIT 283-1880 CT ETCH PRI	PAINT	Purchased	LT	0.050000
2	56999M	0 14258P	GLASURIT 352-235 ETCH ADD SOL	PAINT	Purchased	LT	0.050000
2	56999M	0 14262P	GLASURIT 360-4 METAL CLEANER	PAINT	Purchased	LT	0.100000
2	56999M	0 14320P	SL 1000 BLACK 1 GAL KIT	PAINT	Purchased	EA	0.600000
2	56999M	0 14321P	SL PRIMER 450 2 GAL KIT	PAINT	Purchased	EA	0.015000
2	56999M	0 20052P	ALUM PLATE 3MM 5005	STEEL & ALUMINIUM	Purchased	M2	1.700000
1	85051D	0 57000M	PULLOUT STOWAGE BOARD SES 6X6	FINISHED MISC VEH	Manufactured	EA	1.000000
2	57000M	0 19907P	M ALUM-EXT 3943 40X 40 X 3SLOT	STEEL & ALUMINIUM	Purchased	MT	2.000000
2	57000M	0 19908P	M ALUM-EXT 3941 40X 80 X 6SLOT	STEEL & ALUMINIUM	Purchased	MT	1.345000
2	57000M	0 19945P	CONNECTOR UNI 4386 40 X 40	FASTENERS	Purchased	EA	25.000000
2	57000M	0 19967P	ALUM EXT 40X40X 4SLOT	STEEL & ALUMINIUM	Purchased	MT	1.765000
2	57000M	0 20857P	ALUM CHANNEL 16X16X1.6	STEEL & ALUMINIUM	Purchased	MT	1.200000
1	85051D	0 57001M	BKT TOP BOARD PULLOUT SES	FINISHED MISC VEH	Manufactured	EA	1.000000
2	57001M	0 20008P	ALUM ANGLE 50 X 50 X 4	STEEL & ALUMINIUM	Purchased	MT	0.650000
1	85051D	0 57002M	BKT SP FIXED VE TC CHM SES	FINISHED MISC VEH	Manufactured	EA	1.000000
2	57002M	0 20115P	S/S SHEET 3MM GRADE 304	STEEL & ALUMINIUM	Purchased	M2	0.200000
1	85051D	0 57003M	BKT COMPRESSOR SUPPORT SES	FINISHED MISC VEH	Manufactured	EA	2.000000
2	57003M	0 20028P	ALUM FLAT 40 X 6	STEEL & ALUMINIUM	Purchased	MT	0.420000
1	85051D	0 57004M	COMPRESSOR TRAY MOUNT SES 6X6	FINISHED MISC VEH	Manufactured	EA	1.000000
2	57004M	0 20053P	ALUM PLATE 4MM H5005	STEEL & ALUMINIUM	Purchased	M2	0.250000
1	85051D	0 57005M	BKT STRUT MOUNT BODY 6X6 SES	FINISHED MISC VEH	Manufactured	EA	2.000000
2	57005M	0 20293P	STEEL PLATE 5MM	STEEL & ALUMINIUM	Purchased	M2	0.003025
2	57005M	0 78116P	POWDERCOAT	POWDERCOAT	Purchased	EA	5.000000
1	85051D	0 57006M	BKT STRUT MOUNT DOOR 6X6 SES	FINISHED MISC VEH	Manufactured	EA	2.000000
2	57006M	0 20009P	ALUM ANGLE 50 X 50 X 6	STEEL & ALUMINIUM	Purchased	MT	0.270000
1	85051D	0 57007M	DOOR COVER REAR SES 6X6 SES	FINISHED MISC VEH	Manufactured	EA	1.000000
2	57007M	0 20428P	ALUM PLATE CHEQUER 2.5MM H/N	STEEL & ALUMINIUM	Purchased	M2	0.400000
1	85051D	0 57008M	WHEEL WELL SIDE PLATE 6X6 SES	FINISHED MISC VEH	Manufactured	EA	1.000000
2	57008M	0 20428P	ALUM PLATE CHEQUER 2.5MM H/N	STEEL & ALUMINIUM	Purchased	M2	0.940000
1	85051D	0 57009M	CABIN RELECTRICAL BOX REAR SES	FINISHED MISC VEH	Manufactured	EA	1.000000
2	57009M	0 20050P	ALUM PLATE 2.5MM	STEEL & ALUMINIUM	Purchased	M2	0.950000
2	57009M	0 44088P	HINGE PIANO S/S 38MM X 600MM L	HARDWARE	Purchased	EA	1.000000
2	57009M	0 78116P	POWDERCOAT	POWDERCOAT	Purchased	EA	25.000000
1	85051D	0 57010M	FUEL PIPE COVER REAR FLOOR SES	FINISHED MISC VEH	Manufactured	EA	1.000000
2	57010M	0 20428P	ALUM PLATE CHEQUER 2.5MM H/N	STEEL & ALUMINIUM	Purchased	M2	0.224000
1	85051D	0 57011M	WHEEL ARCH FILL IN PANEL SES	FINISHED MISC VEH	Manufactured	EA	1.000000
2	57011M	0 20428P	ALUM PLATE CHEQUER 2.5MM H/N	STEEL & ALUMINIUM	Purchased	M2	0.420000
1	85051D	0 57012M	LADDER TRAY FRONT SECTION SES	FINISHED MISC VEH	Manufactured	EA	1.000000
2	57012M	0 20052P	ALUM PLATE 3MM 5005	STEEL & ALUMINIUM	Purchased	M2	0.500000
1	85051D	0 57013M	LADDER TRAY REAR SECTION SES	FINISHED MISC VEH	Manufactured	EA	1.000000
2	57013M	0 20052P	ALUM PLATE 3MM 5005	STEEL & ALUMINIUM	Purchased	M2	0.300000
1	85051D	0 57014M	LADDER LOCK LITTLE GIANT SES	FINISHED MISC VEH	Manufactured	EA	1.000000
2	57014M	0 20052P	ALUM PLATE 3MM 5005	STEEL & ALUMINIUM	Purchased	M2	0.018700
2	57014M	0 78116P	POWDERCOAT	POWDERCOAT	Purchased	EA	2.500000
1	85051D	0 57015M	BKT LIGHTMAST SUPPORT SES	FINISHED MISC VEH	Manufactured	EA	1.000000
2	57015M	0 20060P	ALUM PLATE 5MM	STEEL & ALUMINIUM	Purchased	M2	0.172500
1	85051D	0 57016M	AIR FITTINGS SES 6X6 KIT	FINISHED MISC VEH	Manufactured	EA	1.000000
2	57016M	0 30158P	BUSH RED BRASS BSP 1/2" X 1/4"	PLUMBING	Purchased	EA	2.000000
2	57016M	0 30160P	BUSH RED BR BSP 1/2"X3/8"	PLUMBING	Purchased	EA	4.000000

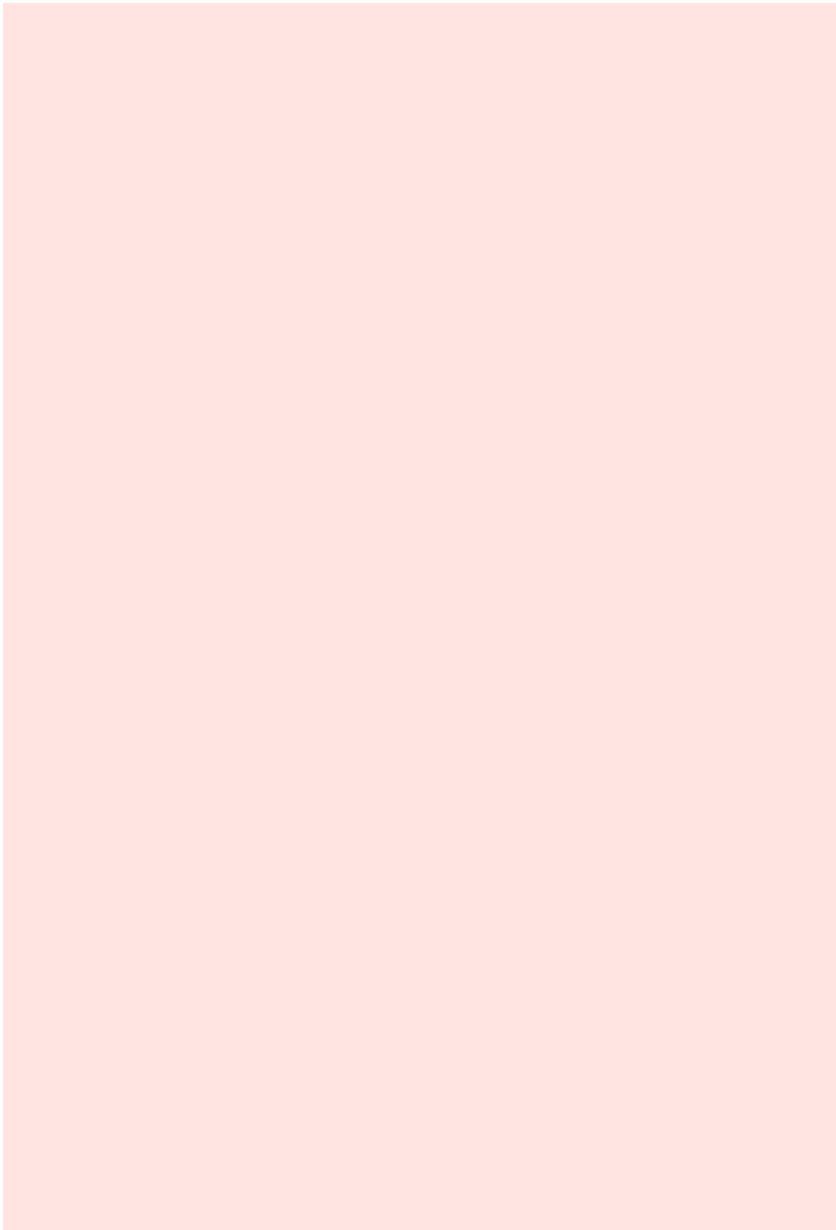
85051D SES RESCUE ALL TERRAIN 6X6

2	57016M	0 30527P	TEE BRASS BSP 1/2"	PLUMBING	Purchased	EA	2.000000
2	57016M	0 30691P	UNION PFM-3 10MM X 1/4" BSP	PLUMBING	Purchased	EA	2.000000
2	57016M	0 30692P	ELB NORGREEN 10147 1028 10MMX1/4	PLUMBING	Purchased	EA	2.000000
2	57016M	0 30940P	ELBOW 101470618 PF6-1/8"	PLUMBING	Purchased	EA	2.000000
2	57016M	0 31364P	PUSHFIT 12MM TUBE X 1/2"BSPT	PLUMBING	Purchased	EA	4.000000
2	57016M	0 31365P	CON BULKHEAD TUBE KQ2E13-04	PLUMBING	Purchased	EA	4.000000
2	57016M	0 31366P	TEE EQUAL TUBE MA29 212 12	PLUMBING	Purchased	EA	2.000000
2	57016M	0 40546P	NYLON TUBE BLACK 10MM NYLON 11	HARDWARE	Purchased	MT	3.000000
2	57016M	0 40547P	NYLON TUBE BLACK 6MM NYLON 11	HARDWARE	Purchased	MT	1.000000
2	57016M	0 42394P	NYLON TUBE BLACK 12MM NYLON	HARDWARE	Purchased	MT	5.000000
2	57016M	0 44488P	COUPLING 08-SR500M6 3/8"M	HARDWARE	Purchased	EA	3.000000
2	57016M	0 44489P	COUPLING 08-SR500F6 3/8"FM	HARDWARE	Purchased	EA	1.000000
1	85051D	0 57017M	BKT HF RADIO MTG SES	FINISHED MISC VEH	Manufactured	EA	1.000000
2	57017M	0 20052P	ALUM PLATE 3MM 5005	STEEL & ALUMINIUM	Purchased	M2	0.019000
2	57017M	0 78116P	POWDERCOAT	POWDERCOAT	Purchased	EA	2.500000
1	85051D	0 57018M	SWITCH MTG PLATE SES	FINISHED MISC VEH	Manufactured	EA	1.000000
2	57018M	0 20052P	ALUM PLATE 3MM 5005	STEEL & ALUMINIUM	Purchased	M2	0.006000
2	57018M	0 78116P	POWDERCOAT	POWDERCOAT	Purchased	EA	2.500000
1	85051D	0 57019M	WARNING LIGHT MTG PLATE SES	FINISHED MISC VEH	Manufactured	EA	1.000000
2	57019M	0 20048P	ALUM PLATE 1.6MM	STEEL & ALUMINIUM	Purchased	M2	0.010000
2	57019M	0 78116P	POWDERCOAT	POWDERCOAT	Purchased	EA	2.500000
1	85051D	0 57020M	BODY PANEL ELECTRICAL 6X6 SES	FINISHED MISC VEH	Manufactured	EA	1.000000
2	57020M	0 20050P	ALUM PLATE 2.5MM	STEEL & ALUMINIUM	Purchased	M2	0.090000
1	85051D	0 57021M	LOCKER SHELF DRIVERS SIDE SES	FINISHED MISC VEH	Manufactured	EA	1.000000
2	57021M	0 20052P	ALUM PLATE 3MM 5005	STEEL & ALUMINIUM	Purchased	M2	1.438000
1	85051D	0 57022M	LOCKER SHELF P/SIDE SES	FINISHED MISC VEH	Manufactured	EA	1.000000
2	57022M	0 20052P	ALUM PLATE 3MM 5005	STEEL & ALUMINIUM	Purchased	M2	2.880000
1	85051D	0 57024M	BKT FIRE EXT SHELF SES	FINISHED MISC VEH	Manufactured	EA	1.000000
2	57024M	0 20026P	ALUM FLAT 32 X 6	STEEL & ALUMINIUM	Purchased	MT	0.360000
2	57024M	0 20052P	ALUM PLATE 3MM 5005	STEEL & ALUMINIUM	Purchased	M2	0.234000
1	85051D	0 57025M	SHELF NARROW SES ALL TERRAIN	FINISHED MISC VEH	Manufactured	EA	1.000000
2	57025M	0 20052P	ALUM PLATE 3MM 5005	STEEL & ALUMINIUM	Purchased	M2	0.262500
1	85051D	0 57026M	CAB SHELF REAR LOWER SES	FINISHED MISC VEH	Manufactured	EA	1.000000
2	57026M	0 20052P	ALUM PLATE 3MM 5005	STEEL & ALUMINIUM	Purchased	M2	1.440000
1	85051D	0 57027M	CAB SHELF REAR UPPER SES	FINISHED MISC VEH	Manufactured	EA	1.000000
2	57027M	0 20052P	ALUM PLATE 3MM 5005	STEEL & ALUMINIUM	Purchased	M2	1.440000
1	85051D	0 57028M	SHELF SUPPORT STRAP SES	FINISHED MISC VEH	Manufactured	EA	2.000000
2	57028M	0 20026P	ALUM FLAT 32 X 6	STEEL & ALUMINIUM	Purchased	MT	0.415000
1	85051D	0 57029M	BKT DUAL BATTERY SOLENOID SES	FINISHED MISC VEH	Manufactured	EA	1.000000
2	57029M	0 20050P	ALUM PLATE 2.5MM	STEEL & ALUMINIUM	Purchased	M2	0.785000
2	57029M	0 78116P	POWDERCOAT	POWDERCOAT	Purchased	EA	2.500000
1	85051D	0 57030M	BKT BATTERY GUARD SES	FINISHED MISC VEH	Manufactured	EA	1.000000
2	57030M	0 20053P	ALUM PLATE 4MM H5005	STEEL & ALUMINIUM	Purchased	M2	0.025000
2	57030M	0 78116P	POWDERCOAT	POWDERCOAT	Purchased	EA	10.000000
1	85051D	0 57031M	BKT SPEAKER&STROBE SES	FINISHED MISC VEH	Manufactured	EA	1.000000
2	57031M	0 20053P	ALUM PLATE 4MM H5005	STEEL & ALUMINIUM	Purchased	M2	0.150000
2	57031M	0 78116P	POWDERCOAT	POWDERCOAT	Purchased	EA	10.000000
1	85051D	0 57032M	LOCKER SHELF RH SIDE UPPER SES	FINISHED MISC VEH	Manufactured	EA	1.000000
2	57032M	0 20052P	ALUM PLATE 3MM 5005	STEEL & ALUMINIUM	Purchased	M2	1.438000
1	85051D	0 57033M	COVER STRIP SES ALL TERRAIN	FINISHED MISC VEH	Manufactured	EA	2.000000
2	57033M	0 20022P	ALUM FLAT 25 X 3	STEEL & ALUMINIUM	Purchased	MT	1.700000
1	85051D	0 57035M	FLOODLIGHT BOX LID ALL TERRAIN	FINISHED MISC VEH	Manufactured	EA	1.000000
2	57035M	0 20428P	ALUM PLATE CHEQUER 2.5MM H/N	STEEL & ALUMINIUM	Purchased	M2	1.000000
1	85051D	0 57036M	TRAY STOWAGE PANEL REAR SES	FINISHED MISC VEH	Manufactured	EA	1.000000
2	57036M	0 19901P	M ALUM-EXT 3737 30 30 X 43L	STEEL & ALUMINIUM	Purchased	MT	2.300000
1	85051D	0 57390M	STROBE LIGHT PROTECTOR SES NPS	FINISHED MISC VEH	Manufactured	EA	1.000000
2	57390M	0 20162P	STEEL BRV/SHAFT 8MM	STEEL & ALUMINIUM	Purchased	MT	1.900000
2	57390M	0 49545P	PROFILE STROBE LIGHT PROTECTOR	PROFILES	Purchased	EA	1.000000
2	57390M	0 78116P	POWDERCOAT	POWDERCOAT	Purchased	EA	10.000000
1	85051D	0 78107P	ELECTRICAL	FINISHED MISC VEH	Manufactured	EA	4,000.000000

[illegible]







[41828P-4.PDF](#)
[41832P-A.pdf](#)

[42828P-B.PDF](#)

[43900P-C.PDF](#)

[45137P HAZCHEM Scale.pdf](#)

[45570P ID Plate.pdf](#)

				45896P-A SEM Lenscap.pdf
				48937P.pdf
27.000000	27.000000	21.964286	21.964286	56235M-B.pdf
2.289562	2.289562	2.370370	2.370370	
5.010000	5.010000	5.010000	5.010000	
0.201600	0.201600	0.201600	0.201600	
7.200000	7.200000	18.000000	18.000000	56240M.pdf
12.000000	12.000000	17.074616	17.074616	
3.840000	3.840000	3.840000	3.840000	44098P.pdf
10.000000	10.000000	10.000000	10.000000	
32.400000	32.400000	57.900000	57.900000	56241M.pdf
19.224000	19.224000	27.353534	27.353534	
25.470000	25.470000	25.470000	25.470000	44100P.pdf
30.000000	30.000000	30.000000	30.000000	
39.600000	39.600000	54.000000	54.000000	56242.pdf
28.824000	28.824000	41.013226	41.013226	
25.470000	25.470000	25.470000	25.470000	44100P.pdf
30.000000	30.000000	30.000000	30.000000	
6.000000	6.000000	5.107143	5.107143	56243M.pdf
5.450000	5.450000	5.153061	5.153061	41654P-A.PDF
4.770000	4.770000	4.770000	4.770000	44099P.pdf
18.000000	18.000000	7.269230	7.269230	
1.571700	1.571700	1.961146	1.961146	
4.000000	4.000000	4.000000	4.000000	
261.000000	261.000000	162.000000	162.000000	56527M-A.PDF
0.615600	0.615600	0.615600	0.615600	
1.402720	1.402720	1.402720	1.402720	
1.908320	1.908320	1.908320	1.908320	
1.939200	1.939200	1.939200	1.939200	
58.050000	58.050000	55.035795	55.035795	
22.000000	22.000000	22.000000	22.000000	
44.369790	44.369790	49.213542	49.213542	
18.000000	18.000000			56549M-A.pdf
16.350000	16.350000	15.459183	15.459183	41654P-A.PDF
23.070000	23.070000	10.752693	10.752693	44101P.pdf
13.500000	13.500000	27.000000	27.000000	56553M-A.pdf
1.745678	1.745678	1.522170	1.522170	
76.500000	76.500000	418.500000	418.500000	
6.955063	6.955063	8.660000	8.660000	
20.363509	20.363509	20.363509	20.363509	
16.050000	16.050000	16.050000	16.050000	
10.800000	10.800000	54.000000	54.000000	
2.770545	2.770545	2.770545	2.770545	
10.800000	10.800000	54.000000	54.000000	
1.939382	1.939382	1.939382	1.939382	
13.500000	13.500000	27.000000	27.000000	
4.155992	4.155992	4.025480	4.025480	
13.500000	13.500000	27.000000	27.000000	
0.499900	0.499900	0.554473	0.554473	
58.500000	58.500000	36.346154	36.346154	
0.031000	0.031000	0.031813	0.031813	

85051D SES RESCUE ALL TERRAIN 6X6

3.116673		3.116673	2.717630	2.717630
13.500000		13.500000	12.461538	12.461538
0.906450		0.906450	1.044913	1.044913
72.000000		72.000000	5.266960	5.266960
9.368800		9.368800	9.873231	9.873231
10.800000		10.800000	6.057692	6.057692
0.860625		0.860625	0.834898	0.834898
27.000000		27.000000	22.846154	22.846154
0.442806		0.442806	0.386111	0.386111
85.500000		85.500000	160.500000	160.500000
1.539000		1.539000	1.539000	1.539000
1.681000		1.681000	1.681000	1.681000
4.558840		4.558840	4.558840	4.558840
8.825980		8.825980	8.825980	8.825980
0.710788		0.710788	0.710778	0.710778
3.171208		3.171208	3.171107	3.171107
2.060400		2.060400	2.060400	2.060400
3.319409		3.319409	3.319298	3.319298
0.346380		0.346380	0.346380	0.346380
1.034350		1.034350	0.953143	0.953143
0.862880		0.862880	0.862863	0.862863
16.647400		16.647400	16.194031	16.194031
0.901292		0.901292	0.901292	0.901292
34.062000		34.062000	29.700871	29.700871
2718.000360		2718.000360	2027.250000	2027.250000
18.468000		18.468000	18.468000	18.468000
11.986500		11.986500	8.800881	8.800881
26.896000		26.896000	26.896000	26.896000
64.875800		64.875800	64.875800	64.875800
114.499200		114.499200	114.499200	114.499200
21.870400		21.870400	21.870090	21.870090
49.208400		49.208400	49.206830	49.206830
36.360000		36.360000	36.360000	36.360000
28.781000		28.781000	28.780041	28.780041
63.220000		63.220000	60.533334	60.533334
85.041000		85.041000	85.041000	85.041000
21.571999		21.571999	21.571579	21.571579
202.664000		202.664000	197.144721	197.144721
382.850940		382.850940	382.849470	382.849470
1259.708323		1259.708323	1435.444802	1435.444802
331.920000		331.920000	414.900000	414.900000
331.920000		331.920000	331.920000	331.920000
331.920000		331.920000	331.919500	331.919500
459.027714		459.027714	499.057160	499.057160
170.379994		170.379994	188.980001	188.980001
20.130000		20.130000	21.312500	21.312500
639.720000		639.720000	639.720000	639.720000
29.040000		29.040000	29.040000	29.040000
4.740000		4.740000	4.740000	4.740000
388.840000		388.840000	392.840000	392.840000
36.400000		36.400000	36.400000	36.400000
39.380000		39.380000	39.380000	39.380000
0.000240		0.000240		
36.000000		36.000000	61.280000	61.280000
14.000000		14.000000	14.000000	14.000000
445.500000		445.500000	595.687500	595.687500
5.332646		5.332646	5.332646	5.332646
64.039950		64.039950	63.189997	63.189997
2.824400		2.824400	2.824400	2.824400
9.835436		9.835436	9.835436	9.835436
452.400000		452.400000	452.400000	452.400000

[54605M-C.pdf](#)

[43908P-B.pdf](#)

[56976M.PDF](#)

85051D SES RESCUE ALL TERRAIN 6X6

175.500000	175.500000		57599M.PDF
27.630000	27.630000	27.630000	27.630000
0.455722	0.455722	0.436000	0.436000
95.940000	95.940000	97.378795	97.378795
112.050000	112.050000	93.015000	93.015000
67.500000	67.500000	174.000000	174.000000
1.231200	1.231200	1.231200	1.231200
0.799100	0.799100	0.586725	0.586725
3.236776	3.236776	3.236776	3.236776
0.602075	0.602075	0.602075	0.602075
4.920840	4.920840	4.920683	4.920683
1.306536	1.306536	1.306536	1.306536
0.930586	0.930586	0.930555	0.930555
0.636125	0.636125	0.586183	0.586183
0.218922	0.218922	0.207676	0.207676
0.111455	0.111455	0.111453	0.111453
22.437800	22.437800	21.826737	21.826737
1.203180	1.203180	1.117769	1.117769
80.789387	80.789387	70.445516	70.445516
225.000000	225.000000	228.750000	228.750000
10.086000	10.086000	10.086000	10.086000
6.312240	6.312240	6.312240	6.312240
9.303060	9.303060	9.303060	9.303060
7.545288	7.545288	7.545181	7.545181
3.717968	3.717968	3.717849	3.717849
3.636000	3.636000	3.636000	3.636000
1.976295	1.976295	1.976229	1.976229
9.005880	9.005880	9.005880	9.005880
1.034350	1.034350	0.953143	0.953143
0.862880	0.862880	0.862863	0.862863
19.542600	19.542600	19.010384	19.010384
60.764000	60.764000	75.351300	75.351300
324.000000	324.000000	688.500000	688.500000
36.101389	36.101389	28.331944	28.331944
221.414400	221.414400	234.172800	234.172800
180.000000	180.000000	229.500000	229.500000
31.588715	31.588715	24.790451	24.790451
44.206000	44.206000	46.753250	46.753250
180.000000	180.000000	189.000000	189.000000
31.588715	31.588715	24.790451	24.790451
44.206000	44.206000	46.753250	46.753250
364.500000	364.500000	405.000000	405.000000
3.078000	3.078000	3.078000	3.078000
1.997750	1.997750	1.466814	1.466814
3.506800	3.506800	3.506800	3.506800
6.679120	6.679120	6.679120	6.679120
4.374080	4.374080	4.373940	4.373940
3.878400	3.878400	3.878400	3.878400
4.604960	4.604960	4.604807	4.604807
7.902500	7.902500	7.566667	7.566667
23.161600	23.161600	22.530825	22.530825
82.980000	82.980000	82.979875	82.979875
238.982100	238.982100	259.822500	259.822500
10.853061	10.853061	10.853061	10.853061
6.134375	6.134375	5.259132	5.259132
1279.440000	1279.440000	1279.440000	1279.440000
20.150000	20.150000	20.150000	20.150000
13.500000	13.500000	47.250000	47.250000
113.989997	113.989997	102.860001	102.860001
27.000000	27.000000		
123.964122	123.964122	111.860251	111.860251

85051D SES RESCUE ALL TERRAIN 6X6

	22.500000	22.500000	104.625000	104.625000
21.768923		21.768923	19.643403	19.643403
	27.000000	27.000000	27.000000	27.000000
98.482500		98.482500	98.484849	98.484849
	112.500000	112.500000	121.500000	121.500000
2.537952		2.537952	2.815015	2.815015
0.598845		0.598845	0.671825	0.671825
0.462750		0.462750	0.718228	0.718228
10.000000		10.000000	10.000000	10.000000
	36.000000	36.000000	6.750000	6.750000
6.008615		6.008615	6.008615	6.008615
	18.000000	18.000000	6.750000	6.750000
2.403446		2.403446	2.403446	2.403446
	18.000000	18.000000	94.500000	94.500000
0.901700		0.901700	0.901454	0.901454
0.292050		0.292050	0.289682	0.289682
10.000000		10.000000	10.000000	10.000000
	126.000000	126.000000	117.045000	117.045000
1.539000		1.539000	1.539000	1.539000
0.799100		0.799100	0.586725	0.586725
4.374080		4.374080	4.373940	4.373940
8.968800		8.968800	8.968800	8.968800
4.604960		4.604960	4.604807	4.604807
9.277200		9.277200	9.277189	9.277189
16.948800		16.948800	16.078143	16.078143
26.846400		26.846400	26.055329	26.055329
17.031000		17.031000	14.850436	14.850436
22.980000		22.980000	22.979771	22.979771
	112.500000	112.500000	130.500000	130.500000
3.078000		3.078000	3.078000	3.078000
1.598200		1.598200	1.173451	1.173451
8.748160		8.748160	8.747881	8.747881
5.817600		5.817600	5.817600	5.817600
9.209920		9.209920	9.209613	9.209613
49.478400		49.478400	49.478342	49.478342
33.897600		33.897600	32.156286	32.156286
5.369280		5.369280	5.211066	5.211066
4.314400		4.314400	4.314316	4.314316
81.748800		81.748800	71.282091	71.282091
	27.000000	27.000000	47.250000	47.250000
16.373476		16.373476	16.373476	16.373476
	45.000000	45.000000	47.250000	47.250000
0.999799		0.999799	1.108945	1.108945
19.006615		19.006615	19.063951	19.063951
	63.000000	63.000000	81.000000	81.000000
2.554650		2.554650	2.227565	2.227565
20.000000		20.000000	20.000000	20.000000
	243.000000	243.000000	294.750000	294.750000
0.923400		0.923400	0.923400	0.923400
4.208160		4.208160	4.208160	4.208160
5.724960		5.724960	5.724960	5.724960
2.908800		2.908800	2.908800	2.908800
96.750000		96.750000	91.726325	91.726325
3.300000		3.300000	3.300000	3.300000
85.189997		85.189997	94.490001	94.490001
	198.000000	198.000000	246.375000	246.375000
0.769500		0.769500	0.769500	0.769500
1.753400		1.753400	1.753400	1.753400
2.385400		2.385400	2.385400	2.385400
2.424000		2.424000	2.424000	2.424000
77.400000		77.400000	73.381060	73.381060

[56989M-B.pdf](#)

85051D SES RESCUE ALL TERRAIN 6X6

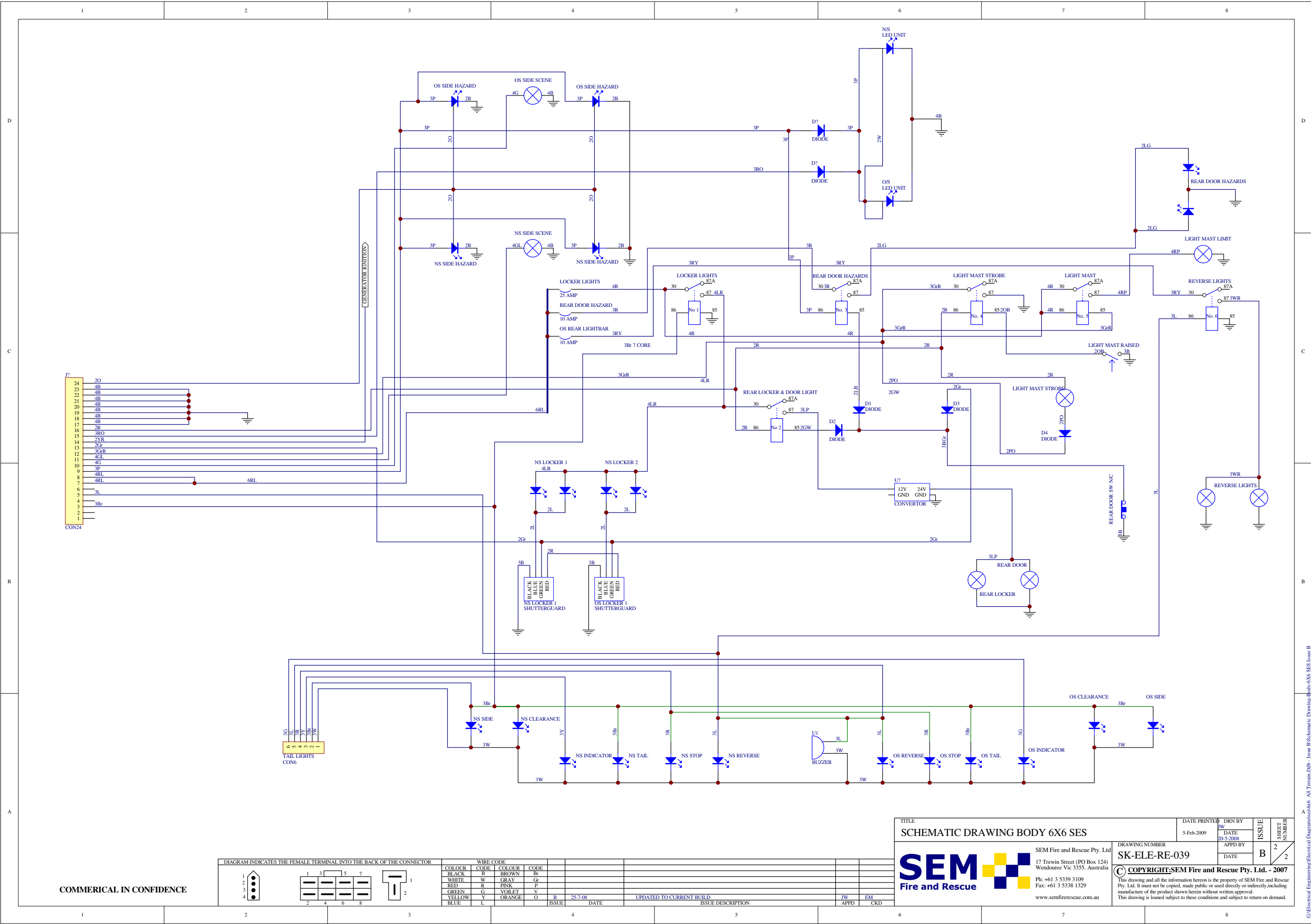
3.300000	3.300000	3.300000	3.300000
0.604300	0.604300	0.696609	0.696609
40.074300	40.074300	39.731420	39.731420
87.997135	87.997135	69.059114	69.059114
18.000000	18.000000	67.500000	67.500000
0.631750	0.631750	0.703500	0.703500
0.313500	0.313500	0.313455	0.313455
0.136000	0.136000	0.136000	0.136000
0.052500	0.052500	0.066673	0.066673
7.500000	7.500000	7.500000	7.500000
225.000000	225.000000	265.500000	265.500000
0.769500	0.769500	0.769500	0.769500
1.753400	1.753400	1.753400	1.753400
2.385400	2.385400	2.385400	2.385400
2.424000	2.424000	2.424000	2.424000
77.400000	77.400000	73.381060	73.381060
3.300000	3.300000	3.300000	3.300000
50.285762	50.285762	55.775348	55.775348
18.000000	18.000000	33.750000	33.750000
44.273020	44.273020	44.272850	44.272850
55.324333	55.324333	63.042392	63.042392
82.980000	82.980000	82.979875	82.979875
40.171753	40.171753	43.674925	43.674925
1.460308	1.460308	1.752245	1.752245
4.500000	4.500000		
4.178720	4.178720	4.145000	4.145000
13.500000	13.500000	13.500000	13.500000
22.895620	22.895620	23.703704	23.703704
12.600000	12.600000	20.250000	20.250000
3.221400	3.221400	3.138977	3.138977
135.000000	135.000000	162.000000	162.000000
11.796875	11.796875	10.113715	10.113715
18.000000	18.000000	27.000000	27.000000
0.295127	0.295127	0.295127	0.295127
10.000000	10.000000	10.000000	10.000000
12.600000	12.600000	16.875000	16.875000
5.152410	5.152410	5.108325	5.108325
9.000000	9.000000	27.000000	27.000000
15.376000	15.376000	16.262000	16.262000
13.500000	13.500000	6.750000	6.750000
36.133600	36.133600	38.215700	38.215700
157.500000	157.500000	158.625000	158.625000
26.965750	26.965750	23.513190	23.513190
18.150000	18.150000	18.150000	18.150000
25.000000	25.000000	25.000000	25.000000
27.000000	27.000000	33.750000	33.750000
8.610560	8.610560	9.106720	9.106720
108.000000	108.000000	131.625000	131.625000
16.144800	16.144800	17.075100	17.075100
18.000000	18.000000	47.250000	47.250000
14.789930	14.789930	16.404514	16.404514
18.000000	18.000000	33.750000	33.750000
8.873958	8.873958	9.842708	9.842708
18.000000	18.000000	23.625000	23.625000
0.553143	0.553143	0.613529	0.613529
2.500000	2.500000	2.500000	2.500000
13.500000	13.500000	20.250000	20.250000
10.481790	10.481790	12.998099	12.998099
0.000090	0.000090		
3.140000	3.140000	1.500000	1.500000
3.840000	3.840000	3.080000	3.080000

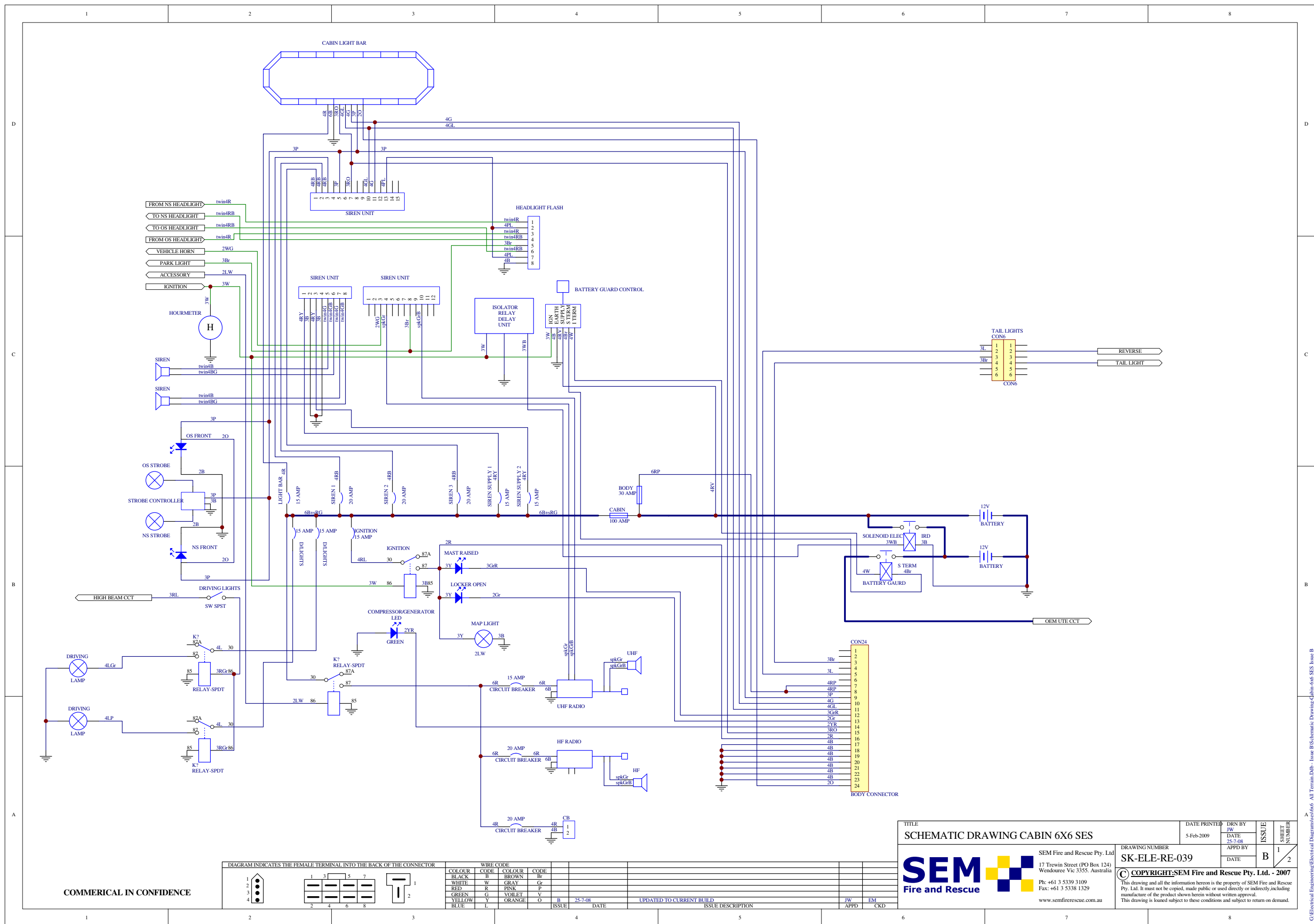
[44088P-1.pdf](#)

85051D SES RESCUE ALL TERRAIN 6X6

3.300000	3.300000	3.300000	3.300000
9.440000	9.440000	9.440000	9.440000
13.200000	13.200000	13.200000	13.200000
12.160000	12.160000	12.160000	12.160000
31.440000	31.440000	31.440000	31.440000
43.800000	43.800000	43.800000	43.800000
22.540000	22.540000	19.513334	19.513334
7.530000	7.530000	7.530000	7.530000
0.860000	0.860000	0.860000	0.860000
18.250000	18.250000	18.250000	18.250000
30.000000	30.000000	30.000000	30.000000
10.000000	10.000000	10.000000	10.000000
9.000000	9.000000	33.750000	33.750000
0.562017	0.562017	0.623372	0.623372
2.500000	2.500000	2.500000	2.500000
13.500000	13.500000		
0.177479	0.177479	0.196854	0.196854
2.500000	2.500000	2.500000	2.500000
13.500000	13.500000	16.875000	16.875000
0.185740	0.185740	0.157743	0.157743
2.500000	2.500000	2.500000	2.500000
13.500000	13.500000	6.750000	6.750000
2.554650	2.554650	2.227565	2.227565
18.000000	18.000000	27.000000	27.000000
42.535839	42.535839	47.179382	47.179382
18.000000	18.000000	30.375000	30.375000
85.189997	85.189997	94.490001	94.490001
18.000000	18.000000	70.875000	70.875000
1.156500	1.156500	1.440000	1.440000
6.921687	6.921687	7.677313	7.677313
9.000000	9.000000	20.250000	20.250000
7.764713	7.764713	8.612370	8.612370
18.000000	18.000000	40.500000	40.500000
42.594998	42.594998	47.245000	47.245000
18.000000	18.000000	40.500000	40.500000
42.594998	42.594998	47.245000	47.245000
27.000000	27.000000	13.500000	13.500000
2.666375	2.666375	3.320000	3.320000
13.500000	13.500000	10.125000	10.125000
22.282225	22.282225	19.429320	19.429320
2.500000	2.500000	2.500000	2.500000
13.500000	13.500000	23.625000	23.625000
1.179688	1.179688	1.011372	1.011372
10.000000	10.000000	10.000000	10.000000
27.000000	27.000000	27.000000	27.000000
7.078125	7.078125	6.068229	6.068229
10.000000	10.000000	10.000000	10.000000
18.000000	18.000000	43.875000	43.875000
42.535839	42.535839	47.179382	47.179382
18.000000	18.000000	10.125000	10.125000
4.216000	4.216000	4.326500	4.326500
54.000000	54.000000	54.000000	54.000000
38.440000	38.440000	40.655000	40.655000
27.000000	27.000000	12.500000	12.500000
27.692000	27.692000	29.284959	29.284959
40.500000	40.500000	40.500000	40.500000
1.729000	1.729000	1.727434	1.727434
7.800000	7.800000	7.800000	7.800000
10.000000	10.000000	10.000000	10.000000

[57035M-A.PDF](#)[57390M-A.PDF](#)[49545P.pdf](#)





SES 6 x 6 ALL TERRAIN BODY FRAME AND CLADDING		SCALE 1" = 20'	SHEET NUMBER A3
REVISION	1 6	A	

GENERAL NOTES

1. REMOVE ALL BURRS AND SHARP CORNERS
2. SURFACE FINISH: PAINTED WHITE
3. QUANTITY ONE (1) OFF PER APPLIANCE



VICTORIA STATE EMERGENCY SERVICE

OPERATING MANUAL

MEDIUM RESCUE BY SEM FIRE AND RESCUE

Toyota LandCruiser Six Wheel Drive



AUGUST 2008

Contents

Part 1 - SES Medium Rescue Overview	1
1. Introduction	1
2. Operational Uses	1
3. This Manual	1
4. Overview of the Toyota LandCruiser	3
5. Body and Equipment	3
6. Modification of Vehicles	3
Part 2 - Copyright Information	1
Part 3 - Safety Information	1
Part 4 - SES Medium Rescue General Specifications	1
Part 5 - Driving the SES Medium Rescue	1
1. Driving and Operating the Vehicle	1
2. Battery Guard	1
3. Starting the Engine	1
4. Turbocharger Protection	1
5. Drivers Seat Adjustment	1
6. Mirrors Adjustment	1
7. Engine Tachometer	2
8. Engine Idle	2
9. Driveline, Suspension and GVM Upgrade	2
10. Two and Four Wheel Drive and Low Range Selector Lever	2
11. Locking Rear Differentials	3
12. Locking Front Differential	3
13. Operating In Sand	3
14. 'Driving' Lights	3
15. Parking Brake Indicator Light	3
16. Alternator Warning Light	4
17. Fuel Gauge	4
18. Wheels and Tyres	4
19. Spare Wheel	4
20. The Vehicle Documents	4
Part 6 - Operating the SES Medium Rescue	1
1. Beacons Light Switch and Siren Controls	1
2. The Kubota Generator	1
3. Generator Engine Fuel Supply	1
4. 240 Volts Power Supply	1
5. Air Compressor and Air Line Hose Connections	2
6. Operating the Telescoping Mast and Lighting Tower	3
7. Operating the Front Mounted Electric Winch	3
8. Fresh Water Tank	3
9. Stowage of Equipment	3

Amendments to this Manual

The person inserting amended pages should initial the amendment block.

Amendment Number	Page	Sections Affected	Effective Date	Officer's Initials
0		Initial Issue	August 2008	

Part 1 - SES Medium Rescue Overview

1. Introduction

In August 2008, the Victoria State Emergency Service (SES) introduced a six-wheel drive Medium Rescue.

The SES Medium Rescue has been constructed on the V8 diesel engine-powered Toyota LandCruiser '70' series wagon. The vehicle build-up comprises the shortening of the original body and lengthening the chassis to incorporate an additional differential and axle. The upgraded driveline provides full time drive through all rear wheels, and 6WD by engaging the front axles. Purpose built body work and lockers allow stowage of tools and equipment required by SES Units.

The vehicle incorporates a number of operational and safety features resulting from the continuing development of SES vehicles including a 240 volts generator set with the engine fuel supply sourced from the vehicle engine, light mast and electrically driven compressor for air lines.

2. Operational Uses

The SES Medium Rescue can:

- Convey a crew of five to the incident location.
- Provide rescue and recovery services using the equipment carried on the vehicle.
- Provide 240 volts electrical supply.
- Provide scene lighting.
- Provide air pressure for tools and equipment.

3. This Manual

This Manual details specifications relating to the performance and operation of the Medium Rescue manufactured by SEM Fire and Rescue for the Victoria State Emergency Service.

This information is provided to enable personnel to gain a basic understanding of the vehicle and to develop sound operating procedures that will ensure that high standards of efficiency are maintained throughout the life of the vehicle.

This manual has been produced in a multi-ring binder to permit future amendments to be inserted, thereby maintaining an up-to-date reference document on the vehicle.



4. Overview of the Toyota LandCruiser

- 3950mm wheel base (to centre point between rear wheels)
- GVM: 5750kg (upgraded)
- Engine: Toyota 4.46 litre Turbocharged and Intercooled V8 cylinder diesel
- Transmission: 5 speed manual
- Power: 151 kW @ 3400 rpm
- Torque: 430Nm @ 1200 to 3200 rpm
- Full time drive through all rear wheels
- Part time Six Wheel Drive through front wheels
- High and Low range transfer case
- Automatic locking rear differentials (upgraded)
- Locking front differential (upgraded)
- Air conditioning
- 90 litres fuel tank
- Steel bull bar
- 'Warn' electrically operated winch

5. Body and Equipment

- Stowage for rescue tools and equipment
- Kubota centrally mounted 6kVa generator set
- 240 volts power outlets
- 8 cfm electrically driven air compressor
- Air tool connections
- Light mast

6. Modification of Vehicles

It is reasonable to assume that modifications of the vehicle may be required in the future. Personnel may also consider that some alterations or additions to the vehicle could result in improved operational capability. Suggestions for modifications and additions must be forwarded to the appropriate SES Regional Office.

Part 2 - Copyright Information

Information and drawings contained in this manual remain the property of SEM Fire and Rescue Pty. Ltd. (SEM).

SEM grants VicSES the ability to use and reproduce the information contained within this manual for training, operation and maintenance purposes. This information must not be provided to other parties without the written permission of SEM.

SEM acknowledges that original equipment manufacturers (OEM) information provided in this manual remains the property of the respective OEM.

Part 3 - Safety Information

SEM Fire and Rescue provides this manual as a guide and recommended practices, and is not liable for injury or damage caused by misuse or negligence.

The following warnings appear throughout the manual.



Danger: Indicates an imminently hazardous situation which, if not avoided, will result in death or serious injury. This signal word is to be limited to the most extreme situations.



Warning: Indicates a potentially hazardous situation which, if not avoided, could result in death or serious injury.



Caution: Indicates a potentially hazardous situation which, if not avoided, may result in minor or moderate injury. It may also be used to alert against unsafe practices.

The following information must be read prior to operating the vehicle

- Only trained and competent personnel should operate this vehicle.
- Read the cab chassis, and equipment manuals prior to operating the vehicle and equipment.
- Ensure that the vehicle and equipment is correctly maintained. Report any faults or damage immediately to your relevant Officer or supervisor.
- Ensure that all equipment used in conjunction with this vehicle has been suitably maintained and tested and meets the required performance and safety requirements.
- Ensure that the vehicle is driven in a safe manner in line with State Regulations, and VicSES procedures.
- Seat belts must be worn by all crew members when the vehicle is in motion.
- Care must be taken when operating the vehicle on rough terrain, cross slopes and cornering under high speed.
- When positioning the vehicle at an incident, consider the safety of the crew and vehicle from all dangers such as falling trees or limbs, traffic, access, escape routes etc.
- Ensure all doors, lockers, equipment, etc. are closed or stowed correctly before moving the vehicle.
- Do not drink the water from the fresh water tank.
- Ensure safe fuel handling methods are used.
- Ensure correct manual handling methods are used. Utilise multiple person-lifting techniques with equipment over 20kg.
- Ensure that all equipment is securely stowed in the cabin.
- Drivers must not operate mobile communication devices (i.e. mobile phones, 2-way radio etc) while the vehicle is in motion.
- No modifications are to be made to the vehicle without approval.
- Only approved personnel are permitted to service the equipment.
- Adhere to the warning labels provided on the vehicle.

Part 4 - SES Medium Rescue General Specifications

The following provides general specifications. Further information about the cabin and chassis may be found in the vehicle Owners Manual.

- Height
 - 2.4 metres
- Overall length
 - 7.1 metres
- Overall width
 - 2.3 metres (mirrors)
- Wheelbase
 - 3950mm (to centre point between rear wheels)
- Turning circle
 - 15.3 metres
- Gross Vehicle Mass
 - 5.75 tonnes (allowable)
 - 4.3 tonnes (without stowage)
- Front axle
 - 1.36 (without crew or stowed)
- Rear axle
 - 2.94 (without crew or stowed)
 - Fitted with Limited Slip Differentials
- Towing capacity
 - 3.5 tonnes (braked trailer)
- Engine
 - Toyota eight (8) cylinder diesel
 - 4.46 litre
 - Turbocharged and Intercooled
 - 4 valves per cylinder
 - 151kW at 3400 rpm
 - 430Nm at 1200 to 3200 rpm
- Engine oil
 - Refer Owners Manual
 - **⚠ CAUTION** Only use oil specified for this engine
- Transmission
 - Toyota
 - Five (5) forward and One (1) reverse
 - Synchromesh all forward gears
- Transfer case
 - Toyota
 - High ratio
 - Low ratio
- Brakes
 - Vacuum assisted hydraulic
 - Front and rear disc brakes
- Park brake
 - Operates on forward rear wheels
- Steering
 - Power assisted
- Wheels and tyres
 - Six (6) stud
 - Tyres BF Goodrich A/T 265/75/R16
 - Inflation Pressures
 - 250kPa front
 - 350kPa rear
- Fuel tank
 - 90 litres (diesel)
- Electrical
 - 12 volts
 - Auxiliary battery fitted

Part 5 - Driving the SES Medium Rescue

This Part provides a précis of the more important aspects about the driving of the vehicle. Further information about the cabin and chassis may be found in the vehicle Owners Manual or for added components by the supplier or installer.

1. Driving and Operating the Vehicle

Driving and operating the vehicle is to be performed in accordance with the relevant **Owner's Manual** which is supplied with the vehicle.

2. Battery Guard



The vehicle is fitted with a 'Battery Guard' which prevents the vehicle batteries being inadvertently discharged by an unwanted load such as lights being left switched 'ON'. The system monitors the battery voltage. With the ignition 'OFF', if the voltage drops below a predetermined level, a relay isolates the vehicle batteries. The LED indicator located on the dashboard will flash to alert the driver that the system has isolated the batteries. To reconnect the batteries, press the switch. The system now allows the driver four minutes to start the vehicle before the batteries isolate again. The system only works when the ignition is 'OFF'. This prevents a shutdown in the event of a charging system failure whilst driving.

3. Starting the Engine

The engine is started by the use of a conventional key operated switch. In cold conditions wait until the glow indicator light goes off before starting the engine. To allow lubrication oil to reach pressure and circulate, the engine should be allowed to 'idle' for a few seconds prior to driving. **⚠ CAUTION** Never 'rev' the engine immediately on start up.

4. Turbocharger Protection

The engine is turbocharged. **⚠ CAUTION** The engine should be allowed to idle for a short period at the end of a run.

5. Drivers Seat Adjustment

Modern vehicle seats provide a range of adjustments to suit different drivers and driving conditions. **⚠ CAUTION** Drivers must be familiar with the range of seat adjustments and ensure the seat is adjusted correctly.

6. Mirrors Adjustment

For safety reasons, the external mirrors must be adjusted by the driver to ensure effective vision to the sides and rear of the vehicle.

7. Engine Tachometer

The engine tachometer indicates the engine speed in revolutions per minute (RPM). Lower gear changes will be easier if engine rpm is limited to that necessary to match the next highest gear. Never operate the vehicle with the tachometer needle in the red zone. Continued operation with the tachometer needle in the red zone can lead to serious engine damage.

8. Engine Idle



When operating this vehicle avoid leaving the engine idling for long periods of time. If the vehicle is required to idle for a long period, use the vehicle's 'Idle Up' switch which increases the engine's revolutions per minute to a fast idle.

9. Driveline, Suspension and GVM Upgrade

A 'Multidrive Technology' chassis, suspension and GVM upgrade to 5750kg has been installed on the vehicle. This incorporates chassis alterations, the fitment of the additional rear differential, and split divider box to drive both rear differentials simultaneously. This upgrade is a variance from the information provided in the Owners Manual.

10. Two and Four Wheel Drive and Low Range Selector Lever

With the 'Multidrive Technology' upgrade all four rear wheels are driven at all times during normal vehicle operations (2WD), and with front wheel drive engaged (4WD) all six wheels are driven. Therefore the original references to 2WD and 4WD on controls and warning lights need to be considered as 2WD meaning rear wheel drive (all four rear wheels), and 4WD meaning the front drive is engaged (all six wheels are being driven). **NOTE:** For the purposes of this Part of this Manual the descriptions used apply to the display on the original vehicle controls and warning lights.

The 2WD and 4WD and HIGH and LOW range lever is used to either select 2WD (driving power is transmitted to the four rear wheels only), or 4WD (driving power is also transmitted to the front wheels). With the front hubs 'LOCKED' the change to or from 4WD can be made without stopping the vehicle. However the 'load' on the driveline should be neutralised by releasing the throttle as the change is made.

⚠ CAUTION Never engage 4WD whilst the rear wheels are slipping.

⚠ CAUTION Driving on hard surfaces in 4WD may cause serious damage to drive line components.

The lever is also used to select the 'LOW' speed range of the transfer case. It should be noted that by engaging 'LOW' range, 4WD will already be engaged. The vehicle should be stopped when changing between 'HIGH' and 'LOW' ranges.

⚠ WARNING The 'N' position located between the 'HIGH' and 'LOW' range positions neutralizes the drive to all wheels. Incorrect selection could be a safety risk.

When operating on a normal flat surface, drive in the 'HIGH' 2WD range position. When driving in mud, sand, on rough surfaces, in steeper terrain, or when the vehicle is being operated at lower speeds, shift into 4WD 'LOW' range position.

11. Locking Rear Differentials

'Detroit' locking differentials are fitted to both rear differentials. These lock and unlock automatically with no direct input from the driver. This action ensures that engine power is always transmitted to all rear wheels regardless of traction conditions. The differential lock will only 'unlock' when one wheel is required to spin faster than the other during cornering. A clicking or banging noise may be heard when locking and unlocking occurs as the vehicle negotiates turns. **⚠ CAUTION** To prevent unnecessary wear on the differentials, the rear tyres must be the same size and with similar levels of wear, and inflated to the same pressures. **⚠ WARNING** Because of the locking differential features, it is possible the vehicle may continue to drive whilst it has a broken axle. Continuing to drive the vehicle in this condition will cause serious damage to the differential. If unsure STOP the vehicle immediately.

12. Locking Front Differential

A driver operated air activated differential lock has been fitted to the front axles. When the differential is locked, drive is distributed equally to both front wheels.

⚠ CAUTION The front hubs must be 'LOCKED' when using front wheel drive.

⚠ WARNING A locked front differential will affect the ability of a vehicle to steer and will increase the steering force required to turn the vehicle. For that reason, a locking front differential should be used only when traction is minimal.

13. Operating In Sand

Improved performance may be achieved when driving in sand by lowering the tyre pressures. **⚠ CAUTION** The vehicle must be driven at reduced speeds when operating with lowered tyre pressures. **⚠ CAUTION** Tyres must be inflated to the correct pressures once sand driving is completed.

14. 'Driving' Lights



Driving lights have been added to the vehicle. The driving lights switch is located beside the 'Battery Guard'. These lights will only operate when 'HIGH' beam is selected.

Driving Lights Switch

15. Parking Brake Indicator Light

The parking brake indicator light comes on when the parking brake lever is applied with the ignition switch 'ON'. **⚠ CAUTION** The indicator light does not indicate the effectiveness of the parking brake, for example, whether it will 'hold' the vehicle on a steep slope. Be sure to pull the parking brake lever fully on when parking the vehicle.

16. Alternator Warning Light

The alternator warning light comes on when the ignition switch is turned to the 'ON' position and goes off when the engine is started and the alternator circuit is brought into normal function. If the alternator warning light comes on while driving, check to ensure the alternator drive belt is not loose or broken. **⚠ CAUTION** Continuing to drive with a loose or broken drive belt will lead to engine overheating and serious damage.

17. Fuel Gauge

The fuel gauge indicates the level of fuel within the fuel tank. The letters 'F' and 'E' represent 'FULL' and 'EMPTY' respectively. Diesel fuel is the only fuel to be used in this vehicle. The diesel fuel must be kept clean and free from impurities, particularly water. A 'FULL' fuel tank will help prevent condensation, thus reducing the possibility of damage being caused to the injector pump and injectors.

18. Wheels and Tyres

Tyres must always be maintained at the correct inflation pressure. **⚠ WARNING** Vehicle jacking and wheel changing procedures MUST be undertaken in accordance with the vehicle manufacturers directions as shown in the Owners Manual provided with the vehicle.

19. Spare Wheel

The spare wheel is mounted in the rear locker. **⚠ WARNING** Ensure correct manual handling methods are used to remove and restow the spare wheel.

20. The Vehicle Documents

The following documents are to remain in the vehicle:

- Log Book.
- SES Medium Rescue Operating Manual.
- The cab-chassis Owner's and Driver's Manual.
- Manuals provided by the suppliers of other equipment fitted to the vehicle.

Part 6 - Operating the SES Medium Rescue

This Part provides a précis of the more important aspects about the operation of the vehicle. **⚠ WARNING** Equipment and tools carried on this vehicle are provided by a number of manufacturers and suppliers. Inappropriate use can cause serious injury. Further information about the safe operation of equipment and tools may be found in the Operators Manuals provided.

1. Beacons Light Switch and Siren Controls



The 'Hazard Systems' controls for the emergency vehicle lighting and siren are centrally located. Siren 'Yelp' should be used when travelling at lower speeds or on approach to an intersection in heavy traffic situations. 'Wail' should be used for when travelling at higher speeds.

2. The Kubota Generator

The 'Kubota GL6000' generator is centrally mounted in the body. A remote key start is located in locker 6. Engine monitoring lamps and an hour meter are also provided. An access flap is provided to gain access to the oil dip stick. A warning lamp on the vehicle instrument panel indicates when the generator ignition is 'ON'.

⚠ CAUTION Prior to starting or stopping the generator, ensure all electrical loads have been switched off.

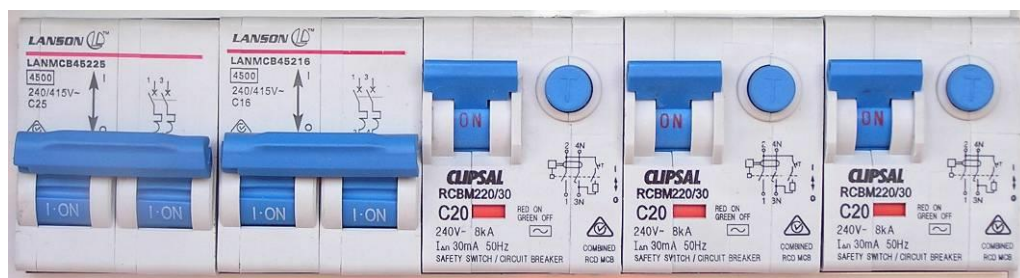
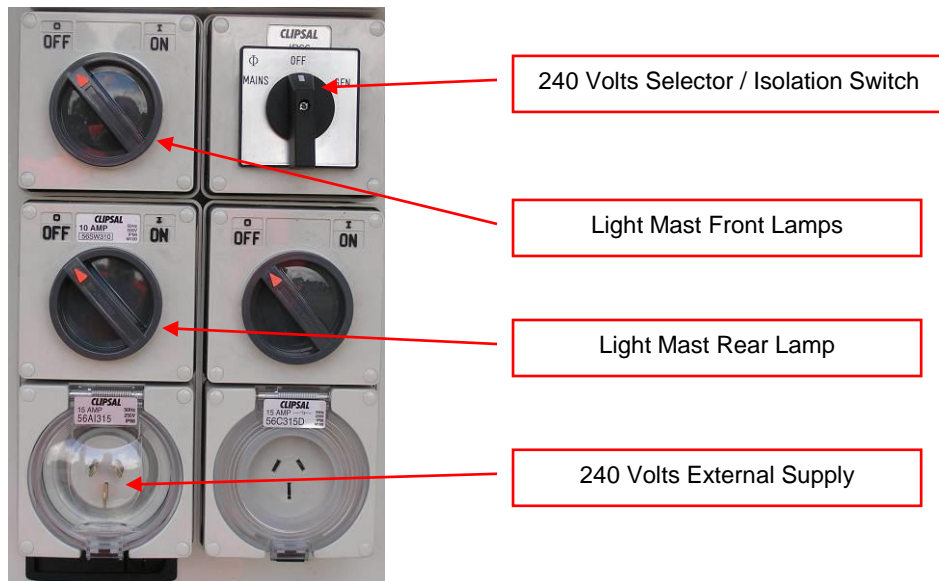


3. Generator Engine Fuel Supply

The diesel fuel for the generator engine is sourced from the vehicle engine fuel return line. Thus the generator engine fuel tank does not need to be filled by hand. The generator engine will operate without the vehicle engine running but the vehicle engine should be started at least half hourly to refill the generator fuel tank.

4. 240 Volts Power Supply

A number of 240 volts power outlets are provided on the vehicle. Circuits are protected by Safety Switch / Circuit Breakers. A selector switch enables 240 volts power to be sourced from either the Kubota generator or from an external supply.



5. Air Compressor and Air Line Hose Connections

A 6 cfm 'McMillan air' compressor is located in Locker 1. The mounting bracket can be lowered for accessing and servicing the compressor. A number of air line hose connections are provided in lockers on the vehicle. The compressor also provides air for the light mast pneumatic operation.



6. Operating the Telescoping Mast and Lighting Tower

The vehicle is fitted with a pneumatically operated telescoping mast and lighting tower. The controls are located in Locker 6. **⚠ DANGER** Check for overhead wires or hazards BEFORE raising the mast. A 'MAST UP' warning lamp located on the instrument panel will illuminate when the mast is not in the stowed position

7. Operating the Front Mounted Electric Winch

An electrically operated 'Warn' winch is mounted on the front of the vehicle. The winch has a capacity of 5,440kg (12,000lb) and is provided for stabilising purposes at an incident scene. **⚠ WARNING** The winch must only be used in accordance with the manufacturer's procedures which are documented separately from this Manual.

8. Fresh Water Tank



A water tank has been installed for the washing of hands, face, etc. The tank is to be filled with fresh water only and is fitted with a combined snap fitting fill-point and outlet complete with ball valve.

⚠ WARNING Water from this tank is NOT suitable for drinking.

9. Stowage of Equipment

Provision has been made for the stowage of items of equipment normally associated with the operation of the Medium Rescue. Equipment additional to that for which stowage is provided shall not be carried on the vehicle, unless approval is first obtained. A complete list of equipment for which stowage provision has been made, and the locker in which these facilities may be found, is attached as Appendix to this Manual.