



Marine Detail Check

ANNUAL REPORT

VEHICLE REPORT

MODEL: BOWRIDER

YEAR: 2005

HIN: AU-TSA050526EL9

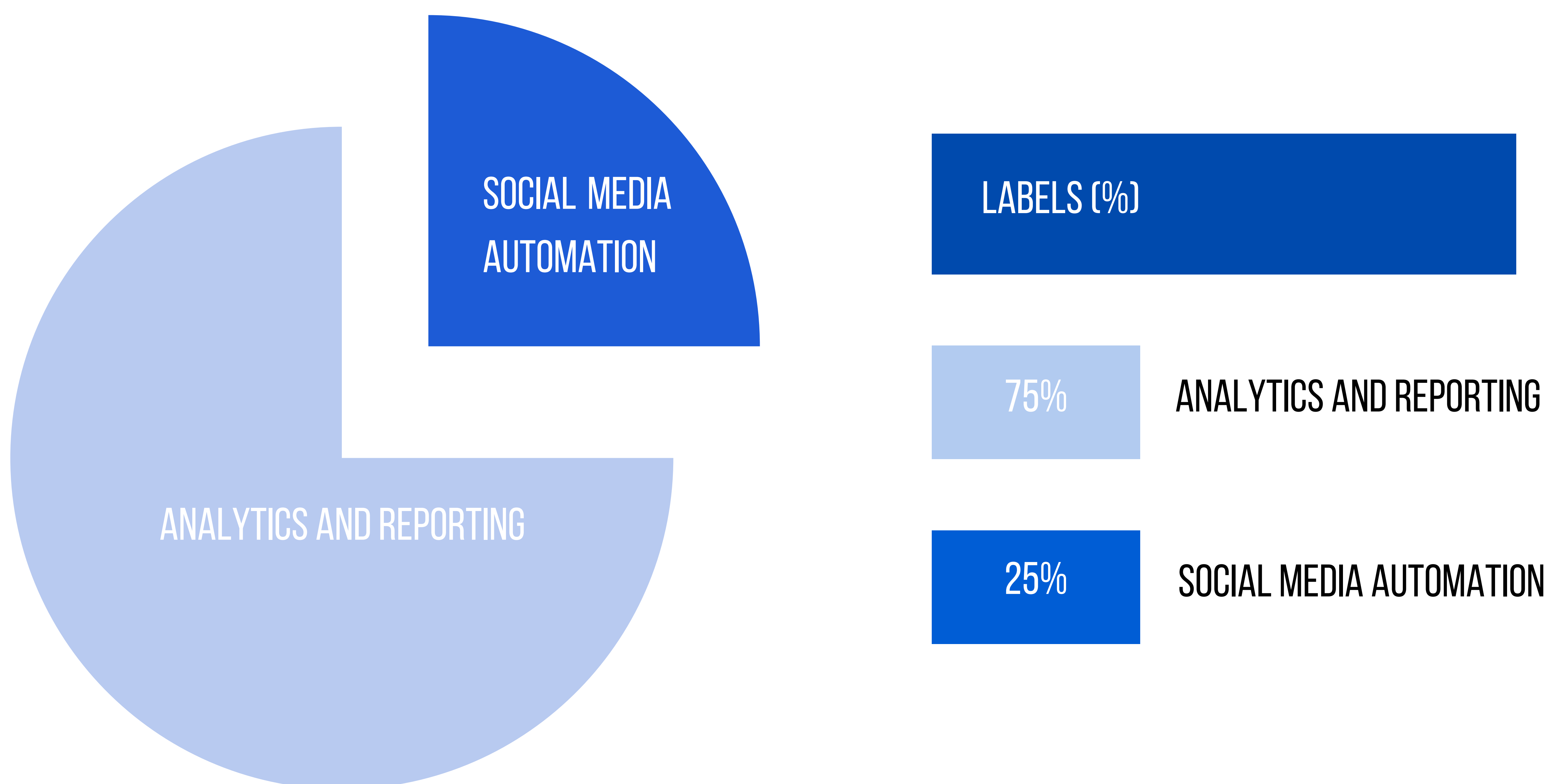
REPORT GENERATED

DATE: 15/4/2025

MARKETING AUTOMATION PERFORMANCE REPORT

OVERVIEW OF MARKETING AUTOMATION

EVERY WATERCRAFT IS GIVEN A UNIQUE CODE AT THE TIME OF PRODUCTION KNOWN AS THE HIN, OR HULL IDENTIFICATION NUMBER. THE HULL IDENTIFICATION NUMBER, OR HIN, ACTS AS THE BOAT'S FINGERPRINT AND CONTAINS DETAILS ON THE MANUFACTURER, MODEL, YEAR, AND LOCATION OF PRODUCTION, AMONG OTHER THINGS. IT IS A STANDARDIZED CODE MADE UP OF 12 CHARACTERS, ALL OF WHICH ARE NUMBERS AND LETTERS.



SPECIFICATION

OUR DEDICATION TO GUARANTEEING AN EXTENSIVE AND COMPREHENSIVE WATERCRAFT REPORT IS UNMATCHED. WE RECOGNISE HOW IMPORTANT IT IS TO HAVE COMPLETE KNOWLEDGE ABOUT YOUR WATERCRAFT, AND WE PROMISE TO GIVE YOU THE MOST ACCURATE AND THOROUGH HULL IDENTIFICATION NUMBER REPORT OUT THERE.

HIN

AU-TSA050526EL9

MAKE

BLUE WATER

MODEL

BOWRIDER

YEAR

2005

FUEL

GASOLINE

SPECIFICATION

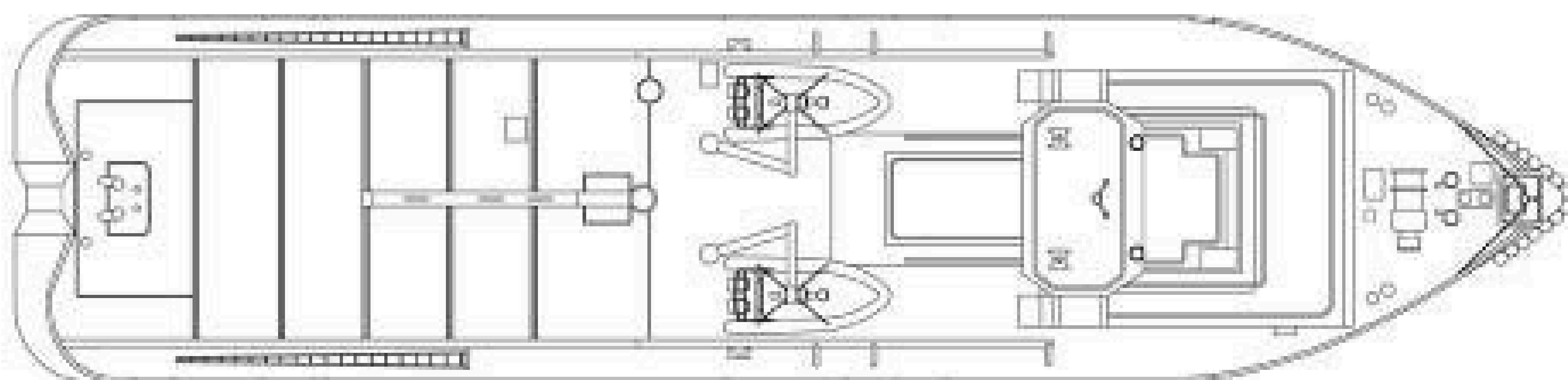
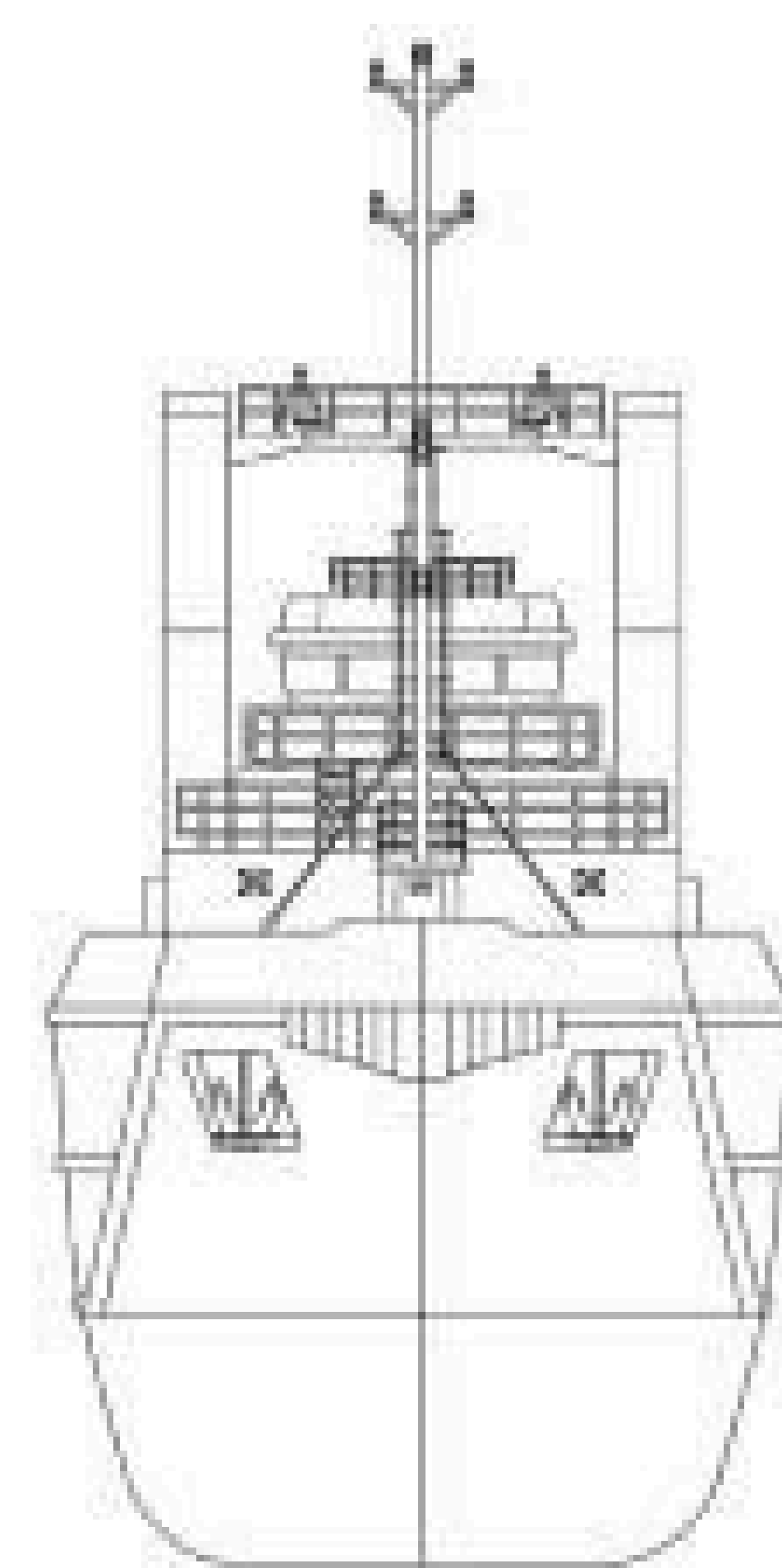
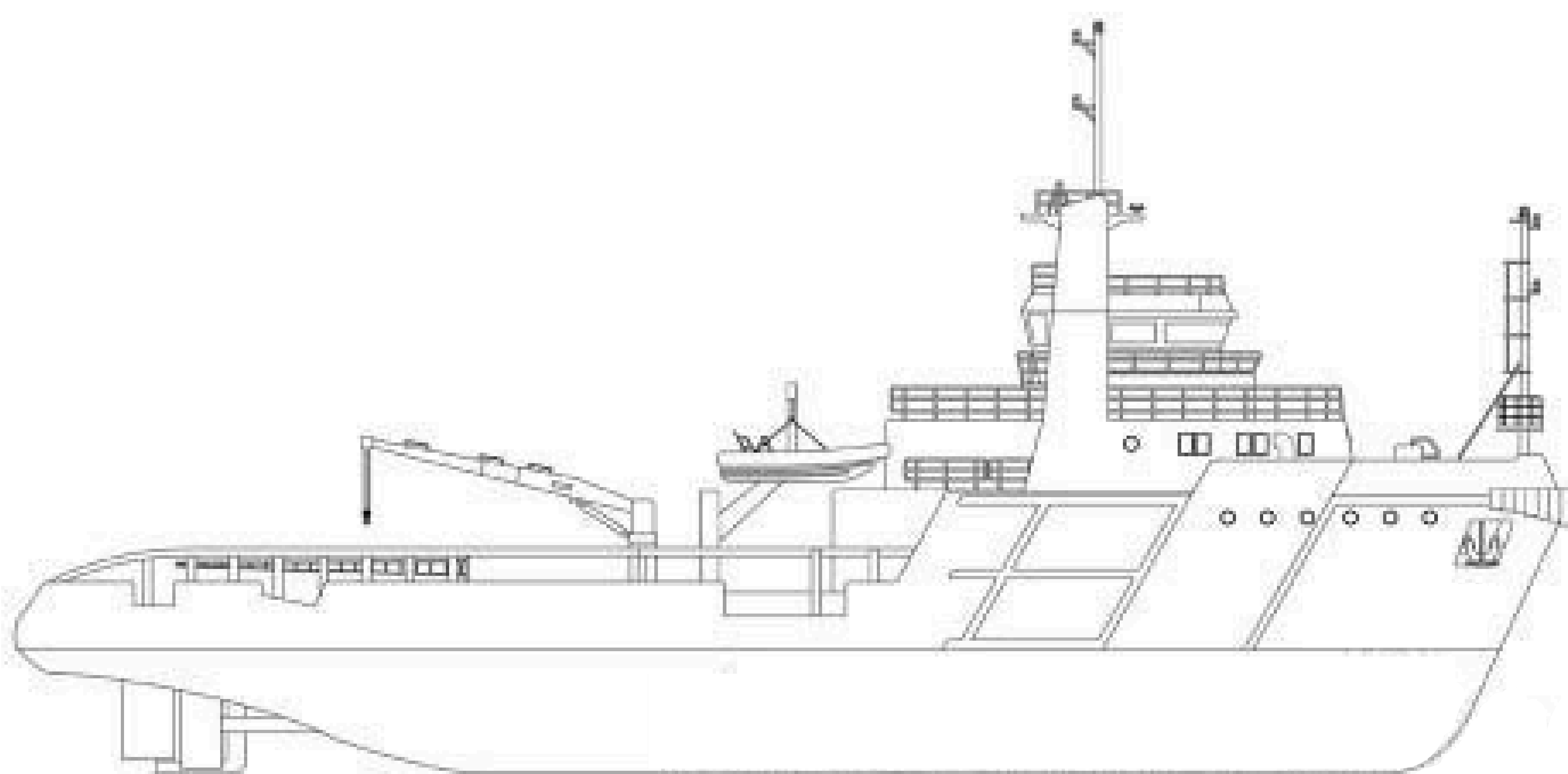
OUR DEDICATION TO GUARANTEEING AN EXTENSIVE AND COMPREHENSIVE WATERCRAFT REPORT IS UNMATCHED. WE RECOGNISE HOW IMPORTANT IT IS TO HAVE COMPLETE KNOWLEDGE ABOUT YOUR WATERCRAFT, AND WE PROMISE TO GIVE YOU THE MOST ACCURATE AND THOROUGH HULL IDENTIFICATION NUMBER REPORT OUT THERE.

HULL MATERIAL	FIBERGLASS
PROPULSION	STERNDRIVE
HORSEPOWER	270 HP (199 KW)
VESSEL TYPE	BOWRIDER.
COLOUR	WHITE WITH RED ACCENTS

SPECIFICATION

DAMAGE	GOOD CONDITION
USCG DOC NUMBER	GOOD CONDITION
LENGTH	6.71 METERS (22 FEET)
USE	GOOD CONDITION
OWNER TYPE	TWO
MANUFACTURED	AUSTRALIA

BODY SURVEY

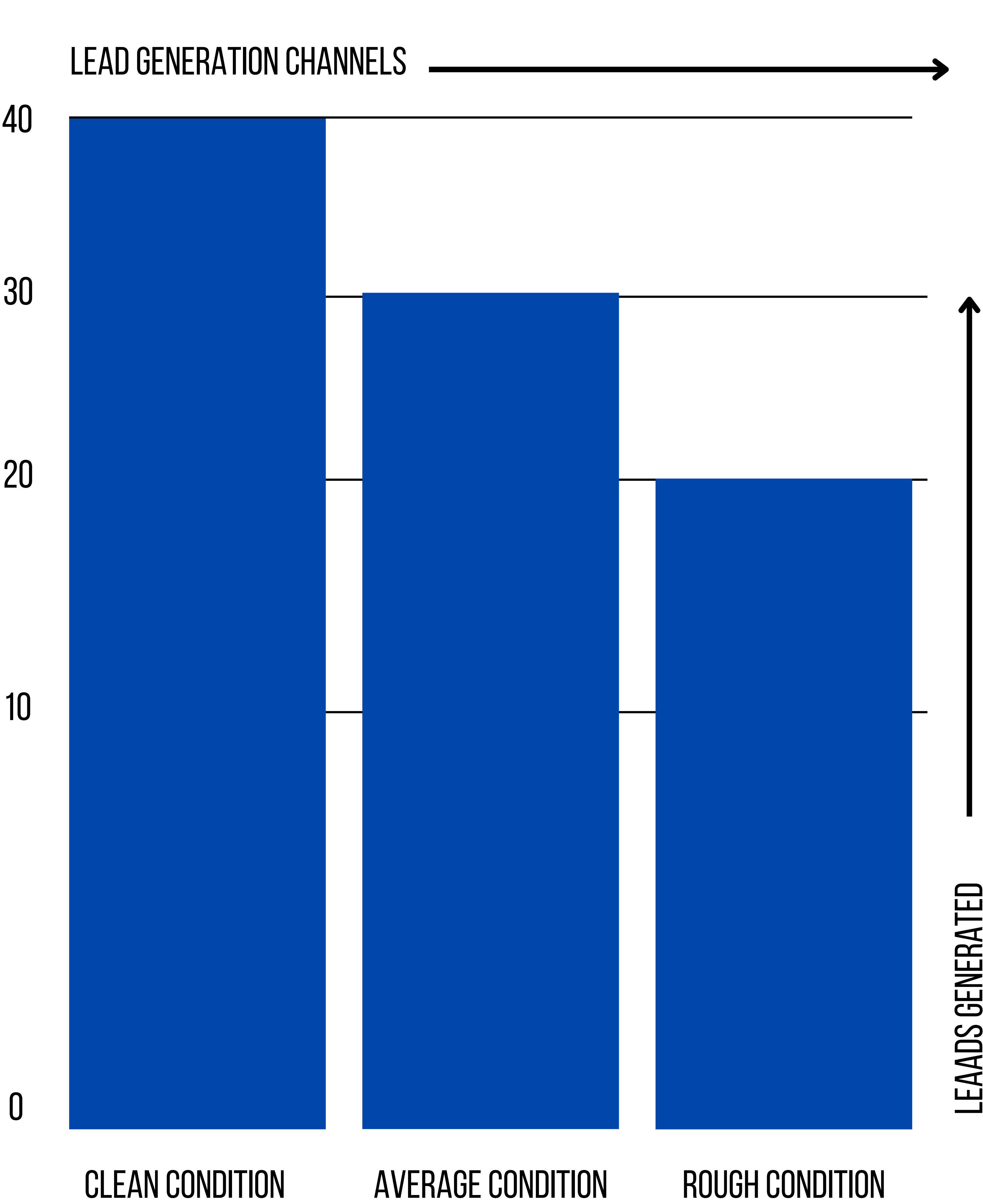


SURVEY PLANS

SPECIFICATION	CONDITION
PURCHASE DATE	OK
REGISTRATION DATE	OK
TRANSACTION DATE	OK
TRANSACTION TYPE	OK
TITLE DATE	OK
TITLE STATUS	OK
REGISTRATION DATE INITIAL	OK

HIN REPORT PERFORMANCE OVERVIEW

LEAD GENERATION MARKET WORTH



ANALYZING THE EFFECTIVENESS OF HIN REPORTS IN VERIFYING OWNERSHIP AND ENSURING SEAMLESS TRANSACTIONS.



40%

BASED ON THE DATA ALONGSIDE, HIN VERIFICATION IS THE MOST RELIABLE METHOD FOR CONFIRMING OWNERSHIP AND STREAMLINING THE TRANSFER PROCESS

USAGE REPORTING

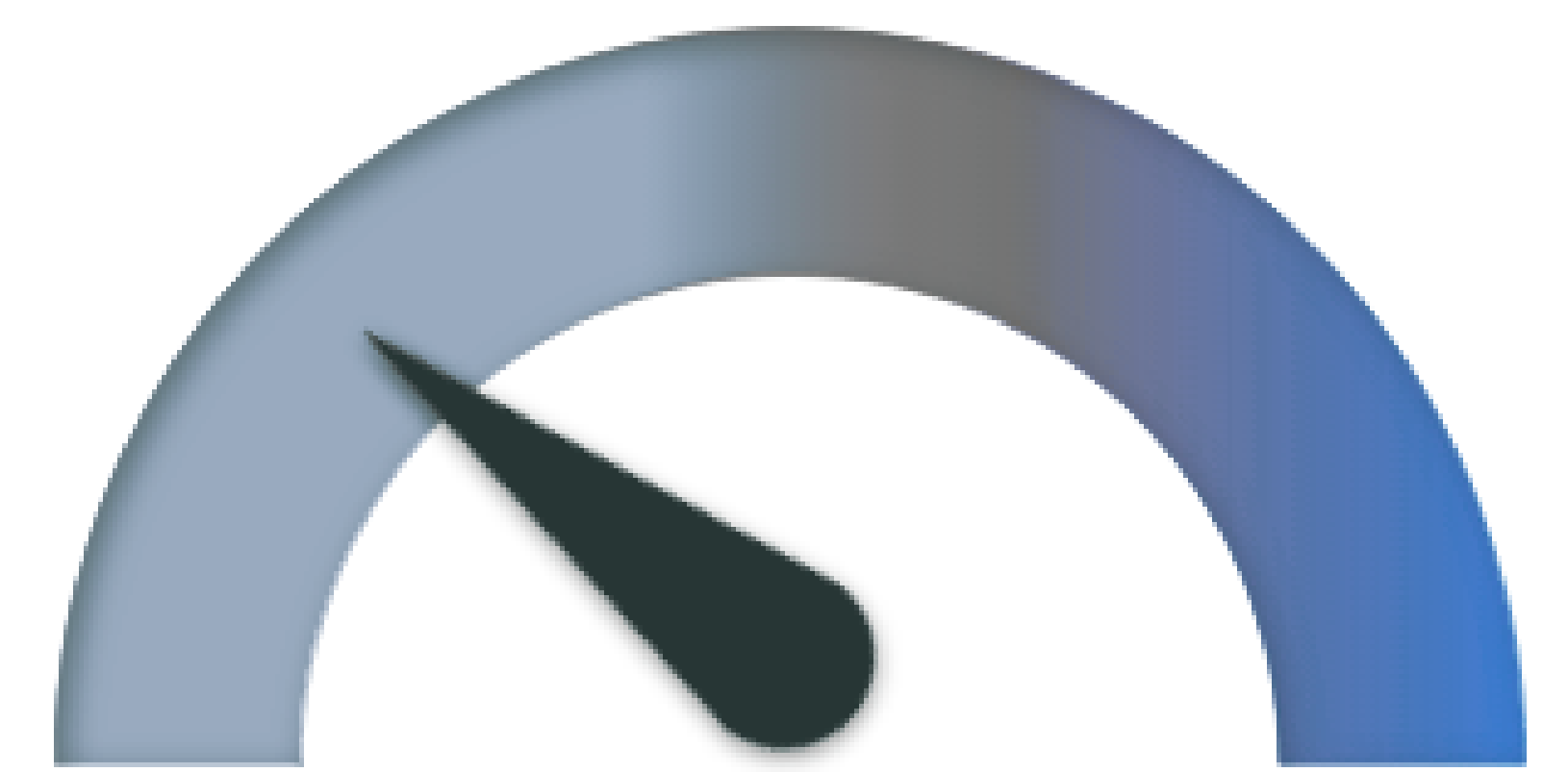
CHALLENGES AND OPPORTUNITIES

IDENTIFYING COMMON CHALLENGES FACED IN ACCESSING WATERCRAFT HISTORY AND OPPORTUNITIES FOR ENHANCED TRANSPARENCY.

LOW: INDICATES THE WATERCRAFT HAS BEEN USED LESS FREQUENTLY THAN THE AVERAGE ANNUAL HOURS OF OPERATION, TYPICALLY UNDER 100 HOURS PER YEAR.

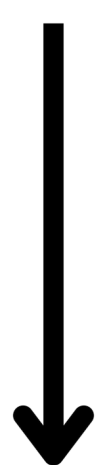
MEDIUM: A MODERATE USAGE LEVEL RECORDED, REFLECTING OPERATIONAL HOURS THAT ALIGN WITH STANDARD SEASONAL USE OR COMMERCIAL ALLOWANCES.

HIGH: HIGH USAGE IS GENERALLY CONSIDERED WHEN THE WATERCRAFT LOGS OVER 10 HOURS A WEEK OR EXCEEDS 500 HOURS ANNUALLY.



HIGH + QUALITY

70



DATA QUALITY

60



INTEGRATION COMPLEXITY

50



PERSONALIZATION

40



**AWARENESS AND TRAINING
AMONG USERS**