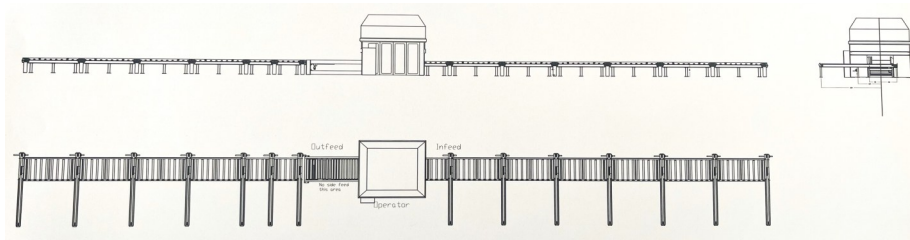


**FOR SALE—2014 XB 1200 METALTEK PLASMA BEAMLINE (\$350,000+GST)**

**AUSTRALIAN DESIGNED, MADE AND SUPPORTED**



**ROBOT CABINET AND CONTROL PANEL**



**GENERAL ASSEMBLY DRAWING**

**INCLUDES**

This machine includes:  
 18m infeed roller table  
 18m outfeed roller table  
 600 amp HD Hypertherm plasma cutter  
 Both infeed and outfeed tables include automated grippers for loading and unloading

**CAPABILITY**

The machine will cut:  
 Material up to 800mm high & 1200mm wide  
 Mild steel, stainless steel and aluminium  
 Cut, Cope, Etc & Bevel  
 UB's, UC's, Pipe, RHS, SHS and Angle

**REQUIREMENTS**

The machine is approximately 40m long and it will require adequate space on the infeed & outfeed for storage of material to be cut and for cut material  
 Crane access is desirable/required over both the infeed and outfeed  
 415V AC power, compressed air and cutting gases including oxygen, argon and (nitrogen)

**ADVANTAGES**

This machine will reduce your labour cost by up to 5 men  
 Much quicker cutting & allows continuous inhouse processing  
 Avoids delays arising from reliance on outside services.  
 Better nesting of parts reducing material cost  
 Allows you to provide cutting services to others which will improve your bottom line  
 Can generate work if you want  
 Enables parts to be cut to fit fabrication program  
 No marking out  
 Reduced labour worries



**ANGLE BRACKETS**



**ANGLE PROCESSING (Round an slotted holes)**



**BEAM PROCESSING**



**COMPLEX PIPE PROCESSING**



**HOLE CUTTING**

4 - M-138	3 - M-165	3 - M-165	3 - M-165
85	2 - M-176	7 - M-176	7 - M-176
8 - M-166	7 - M-176	10 - M-175	10 - M-175
166	6 - M-166	6 - M-166	6 - M-166
2 - M-167	2 - M-167	2 - M-167	2 - M-167
88	14 - M-168	14 - M-168	15 - M-180
84	14 - M-168	14 - M-168	14 - M-168
169	19 - M-169	19 - M-169	20 - M-182
185	19 - M-169	19 - M-169	19 - M-169
4-170	24 - M-170	25 - M-131	26 - M-130
M-170	24 - M-170	24 - M-170	28 - M-133
	30 - M-164	30 - M-164	

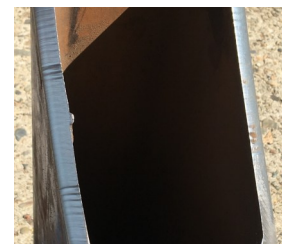
**AUTOMATED NESTING**



**PIPE BEVELLING**



**ETCH MARKING (CLEATS & LABELS)**



**RHS BEVELLING**

**CONTACT DETAILS**  
 KMAR ENGINEERING  
 Peter Learmonth  
 Ph 0413 800 170