



DISCLAIMER: Second-Hand Plant Condition and Safety

This document is Jungheinrich Australia Pty Ltd's (**Jungheinrich**) official notice that the second-hand plant offered for sale through this transaction (direct sale or auction) may contain faults or deficiencies that could pose risks to health and safety.

Important Information

Safety & Compliance of the Plant

Given the plant is second-hand, please be aware it may include wear and tear, or be missing safety features that were not present or required at the time of original manufacture.

Jungheinrich has taken all reasonably practicable steps to identify any faults in the plant. The **enclosed** Condition Report sets out the current condition of this plant, including any identified faults.

While all efforts have been made to identify faults, there may be other faults present that did not show up at time of inspection

Operational Safety Notice

The plant should not be used until all identified faults have been rectified and the equipment is deemed safe for operation.

It is the responsibility of the purchaser to ensure that the plant is inspected, serviced, and, if necessary, modified to meet current safety standards before use.

By participating in this sale and purchasing the second-hand plant, the purchaser acknowledges receipt of this notice and accepts full responsibility for ensuring the plant is safe for use.

Operating condition of the plant

Note: this condition report is a safety report only and does not represent overall appearance or operating condition of the plant

For any questions please contact Jungheinrich



Used Sale Safety & Compliance Check

MHE-000258 / FN571244 / Timothy Hodson / 25/03/2026 /
Jungheinrich / EFG 218K

Complete

Flagged items	0
Report ID	MHE-000258
Technician Name	Timothy Hodson
Conducted on	25/03/2026 1:09 PM AEST
Branch	Brisbane
Unit Details	
Equipment No.	FN571244
Brand	Jungheinrich
Model	EFG 218K
Mast ID	51689328

Include Images of the Front, Rear & Sides of the Unit



Photo 1

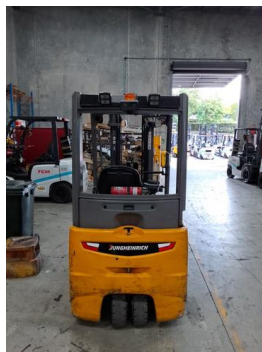


Photo 2



Photo 3



Photo 4

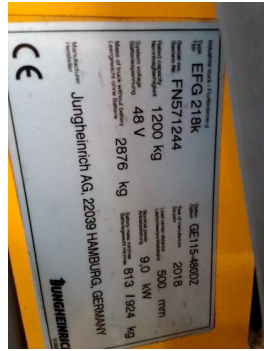


Photo 5



Photo 6



Photo 7

Observations Summary

Truck Category

Category 3 - Electric Counterbalance

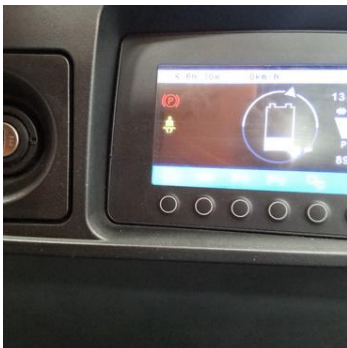


Photo 8

Emergency Stop, Horn/Warning device, lights, reverse alarm and flashing lights operational

No

E stop/ isolater needs replacing.
Ignition needs replacing, machine starts up even with key removed.
Rear lights not working.

Seat switch and seat belt switch fitted to check presence of operator & working in sequence?

Yes

Seat is secure and seat belt is in serviceable condition?

Yes

Mast switch operation for travel speed reduction to 3kmh above specified height

Yes

Are brakes and park brake functioning correctly?	Yes
Are tyre treads within limits and/or free from damage?	Yes
Tyres worn	
Are fork tynes in good condition and within specification?	Yes
Are mast chains in good condition, within specification and working correctly?	Yes
Are all controls inc. lift, tilt & sideshift/auxilliary functions working correctly	Yes
Confirm safety systems not bypassed or malfunctioning?	No
SmarTracker bypassed.	

Additional Observations & Actions

Technician Sign off



25/03/2026 1:29 PM AEST

Media summary



Photo 1



Photo 2



Photo 3



Photo 4

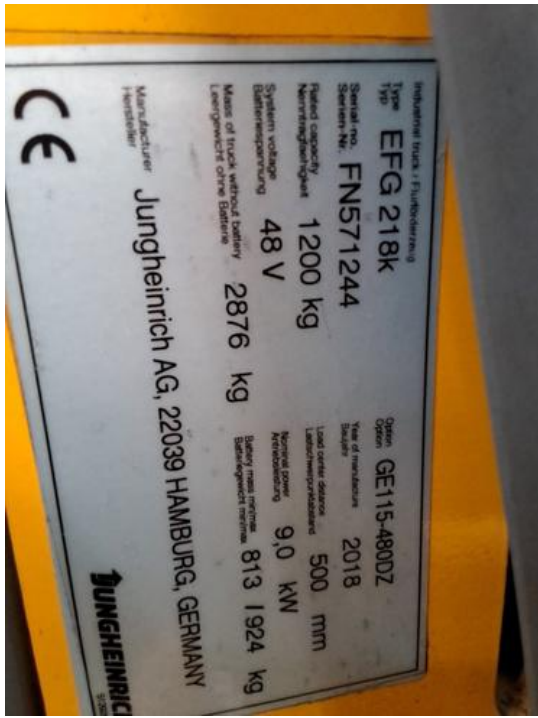


Photo 5

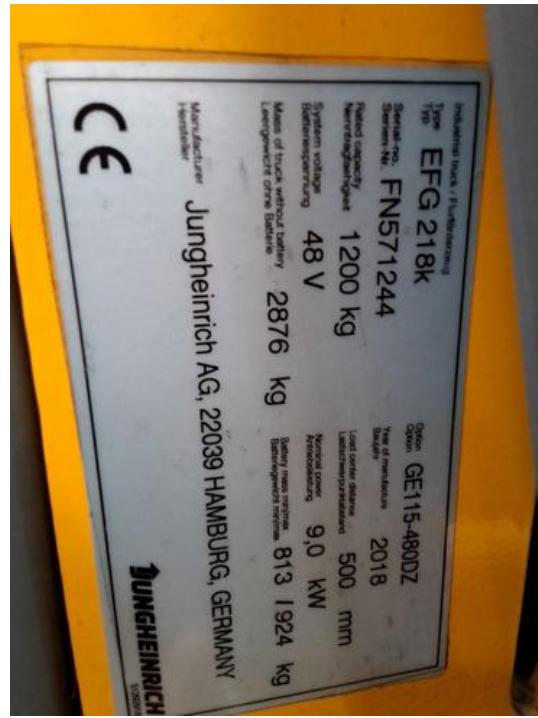


Photo 6



Photo 7

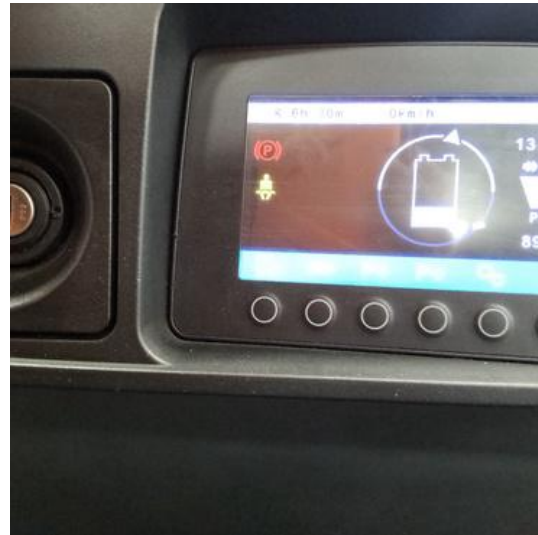


Photo 8