



## **DISCLAIMER: Second-Hand Plant Condition and Safety**

This document is Jungheinrich Australia Pty Ltd's (**Jungheinrich**) official notice that the second-hand plant offered for sale through this transaction (direct sale or auction) may contain faults or deficiencies that could pose risks to health and safety.

### **Important Information**

#### **Safety & Compliance of the Plant**

Given the plant is second-hand, please be aware it may include wear and tear, or be missing safety features that were not present or required at the time of original manufacture.

Jungheinrich has taken all reasonably practicable steps to identify any faults in the plant. The **enclosed Condition Report** sets out the current condition of this plant, including any identified faults.

While all efforts have been made to identify faults, there may be other faults present that did not show up at time of inspection

#### **Operational Safety Notice**

The plant should not be used until all identified faults have been rectified and the equipment is deemed safe for operation.

It is the responsibility of the purchaser to ensure that the plant is inspected, serviced, and, if necessary, modified to meet current safety standards before use.

By participating in this sale and purchasing the second-hand plant, the purchaser acknowledges receipt of this notice and accepts full responsibility for ensuring the plant is safe for use.

#### **Operating condition of the plant**

Note: this condition report is a safety report only and does not represent overall appearance or operating condition of the plant

For any questions please contact Jungheinrich



## Used Sale Safety & Compliance Check

MHE-000255 / FN444657 / Workshop Brisbane / 25/03/2026 /  
Jungheinrich / EFG 218

Complete

<b>Flagged items</b>	0
<b>Report ID</b>	MHE-000255
<b>Technician Name</b>	Workshop Brisbane
Timothy Hodson	
<b>Conducted on</b>	25/03/2026 8:38 AM AEST
<b>Branch</b>	Brisbane
Unit Details	
<b>Equipment No.</b>	FN444657
<b>Brand</b>	Jungheinrich
<b>Model</b>	EFG 218
<b>Mast ID</b>	51080630

### Include Images of the Front, Rear & Sides of the Unit



Photo 1



Photo 2



Photo 3



Photo 4

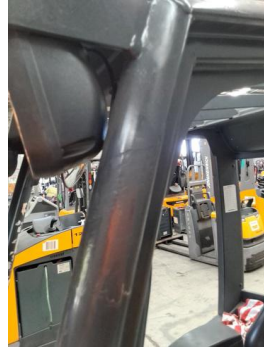


Photo 5



Photo 6



Photo 7



Photo 8

### Observations Summary

#### Truck Category

Category 3 - Electric Counterbalance

#### Emergency Stop, Horn/Warning device, lights, reverse alarm and flashing lights operational

No

Reverse light/spotlight not working

#### Seat switch and seat belt switch fitted to check presence of operator & working in sequence?

Yes

#### Seat is secure and seat belt is in serviceable condition?

No

Seat slightly loose

#### Mast switch operation for travel speed reduction to 3kmh above specified height

Yes

#### Are brakes and park brake functioning correctly?

Yes

#### Are tyre treads within limits and/or free from damage?

No

Tyres heavily worn

#### Are fork tynes in good condition and within specification?

Yes

#### Are mast chains in good condition, within specification and working correctly?

Yes

**Are all controls inc. lift, tilt & sideshift/auxilliary functions working correctly**

Yes

**Confirm safety systems not bypassed or malfunctioning?**

Yes

Additional Observations & Actions

**List any other notable defects or faults e.g. ROPS/FOPS damage etc.**

ROPs has some damage, see photos.

Chains under 1% wear.

Tyres heavily worn.

Load gaurd bent.

Reverse lights not working

Seat slighty loose, needs bolts tightened. Seat belt works completely

**Technician Sign off**



25/03/2026 9:08 AM AEST

Media summary



Photo 1



Photo 2



Photo 3



Photo 4



Photo 5



Photo 6



Photo 7



Photo 8